

For Lease Yaletown Mews

Zoned for Assembly/Education Use



200 NELSON STREET, VANCOUVER, BC

THE LOCATION

Yaletown Mews is centrally located at the corner of Cambie Street and Nelson Street in the popular and upbeat Yaletown district within the downtown core of the City of Vancouver. The building is two blocks from the Yaletown Roundhouse Canada Line Station which reaches destinations of Richmond and the YVR Airport within twenty minutes.

AVAILABLE SPACE

SUITE	AREA
200 Nelson Street	3,898 s.f.

AVAILABILITY	ADDITIONAL RENT (2020 EST)
Immediately	\$23.22 p.s.f./p.a.

BASIC RENT
Please contact listing agents

COMMENTS
Well improved school premises with high ceilings. The premises includes multiple street front entrances/exits, 8 classrooms, administration and lounge areas, private washrooms and reception.

Building signage opportunity available



100

RIDER'S PARADISE



92

VERY BIKEABLE

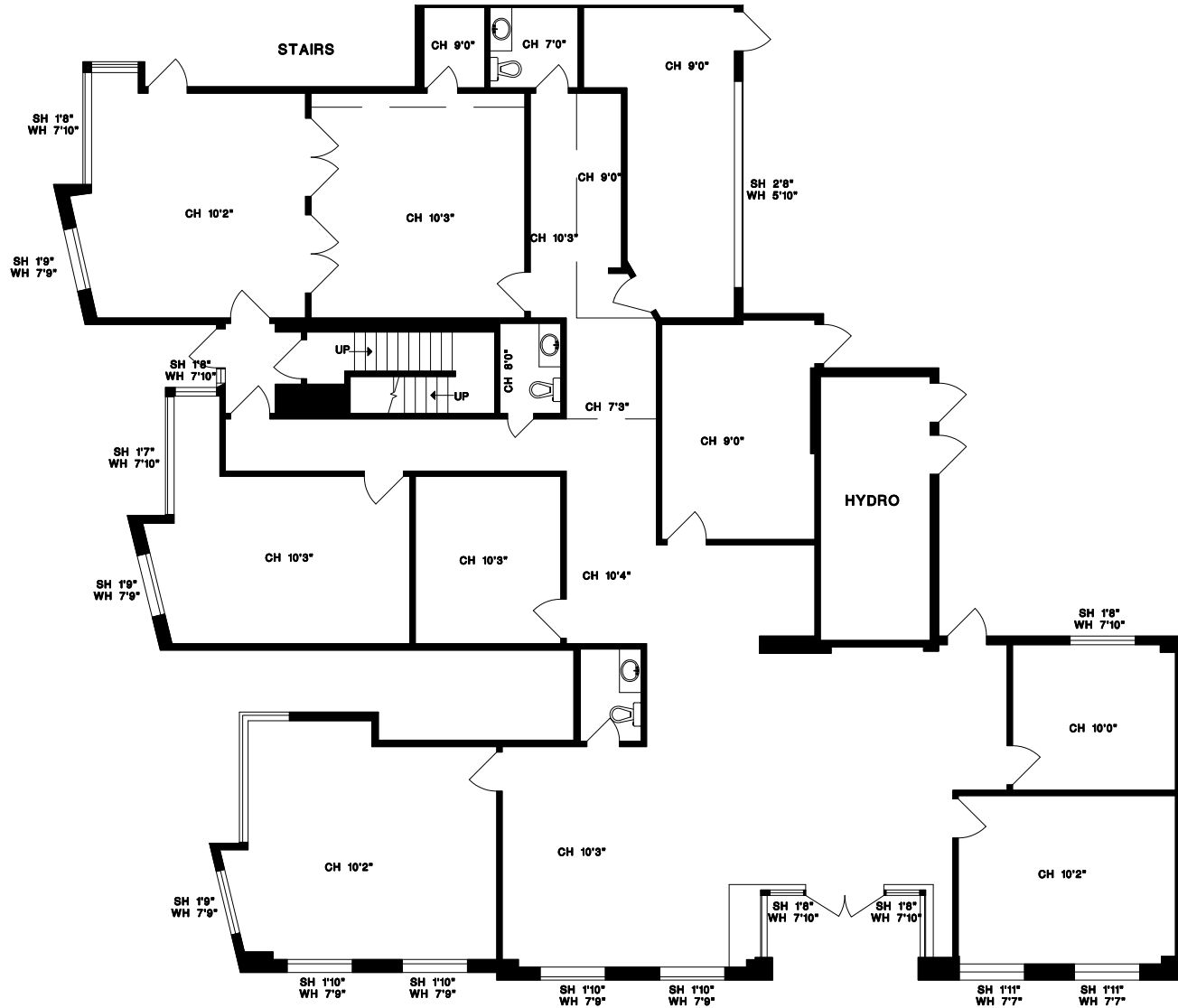


77

WALKER'S PARADISE



FLOOR PLAN



For more information,
contact leasing agents:

Andrew Astles
+1 604 998 6045
andrew.astles@am.jll.com

Mark Trepp*
+1 604 998 6035
mark.trepp@am.jll.com

**Jones Lang LaSalle Real Estate
Services Inc.**
510 West Georgia Street, Suite 2150
Vancouver, BC V6B 0M3

