

*For Lease  
Yaletown Mews*



1 0 7 5 C A M B I E S T R E E T , V A N C O U V E R , B C



## THE LOCATION

Yaletown Mews is centrally located at the corner of Cambie Street and Nelson Street in the popular and upbeat Yaletown district within the downtown core of the City of Vancouver. The building is two blocks from the Yaletown Roundhouse Canada Line Station which reaches destinations of Richmond and the YVR Airport within twenty minutes.

## AVAILABLE SPACE

SUITE	AREA
<b>1075 Cambie Street</b>	<b>1,502 s.f.</b>
AVAILABILITY	ADDITIONAL RENT (2021 EST)
<b>November 1, 2021</b>	<b>\$21.60 p.s.f./p.a.</b>

BASIC RENT  
**Please contact listing agents**

COMMENTS  
**Three office spaces with a large boardroom and kitchen. Private washroom and open area.**



100

RIDER'S PARADISE



92

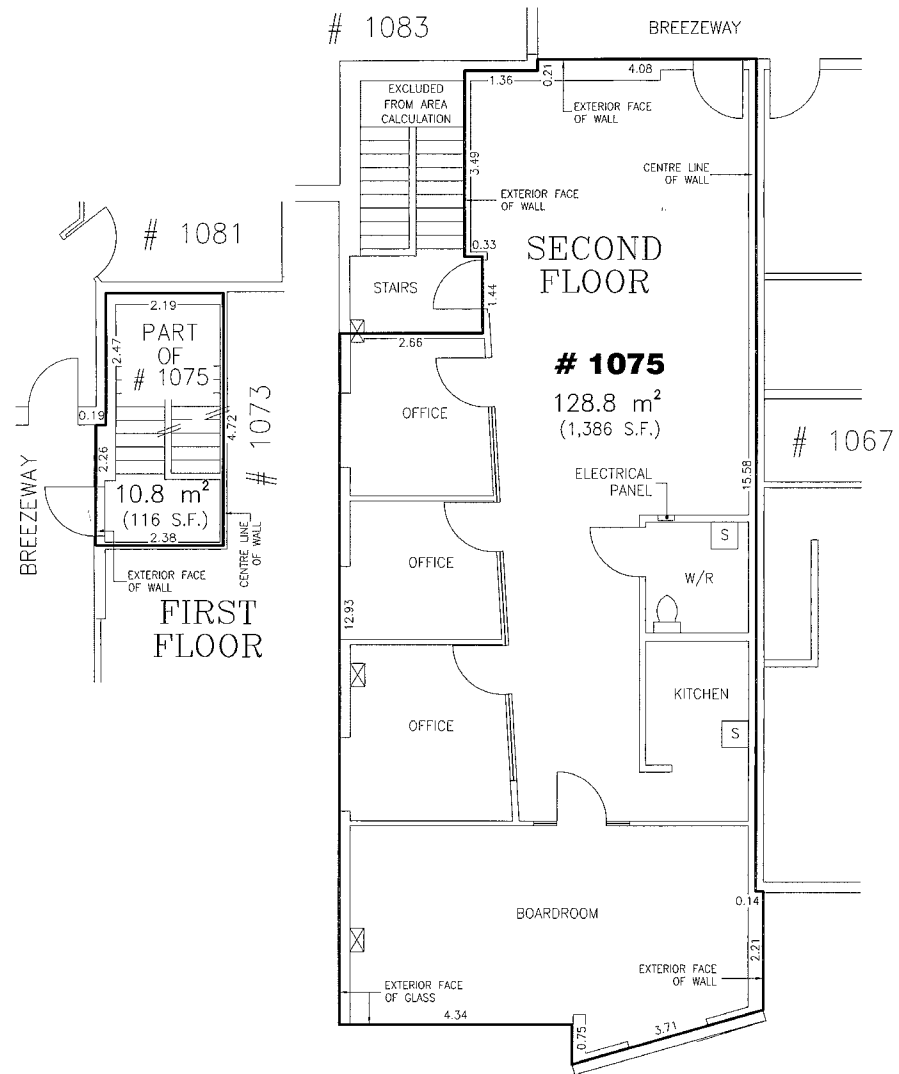
VERY BIKEABLE



77

WALKER'S PARADISE

## FLOOR PLAN



For more information,  
contact leasing agents:

**Andrew Astles**  
+1 604 998 6045  
[andrew.astles@am.jll.com](mailto:andrew.astles@am.jll.com)

**Mark Trepp\***  
+1 604 998 6035  
[mark.trepp@am.jll.com](mailto:mark.trepp@am.jll.com)

**Jones Lang LaSalle Real Estate  
Services Inc.**  
510 West Georgia Street, Suite 2150  
Vancouver, BC V6B 0M3

