



For Lease

Great Value in the Heart of Brattleboro!

- 13 Office Suites on the 2nd and 3rd Floors
- Suite Sizes Ranging from 1 Room to 27 Rooms
- Suite Sizes Ranging from 179 S.F. to 8,984 S.F.
- Rents Ranging from \$8/S.F. to \$13/S.F.
- Suite Rents Ranging from \$125 to \$7,110 Per Month
- Rent Includes Heat, AC, Electricity, Restrooms, Snow Removal, Trash Removal, Landscaping, Common Area Cleaning
- Elevator
- No Parking
- Limited Hours of Access
- Five Year Lease Terms Preferred
- Renewal Options Possible

**204 Main Street
Brattleboro, VT 05301**

Contact:

Sally Fegley

Windham Property Management, Inc.

info@windhampmi.com

802-380-8272

P.O. Box 516, Brattleboro VT 05302

Disclaimer

2017 Jones Lang LaSalle IP, Inc. All rights reserved. All information contained herein is from sources deemed reliable; however, no representation or warranty is made to the accuracy thereof.



Building Location



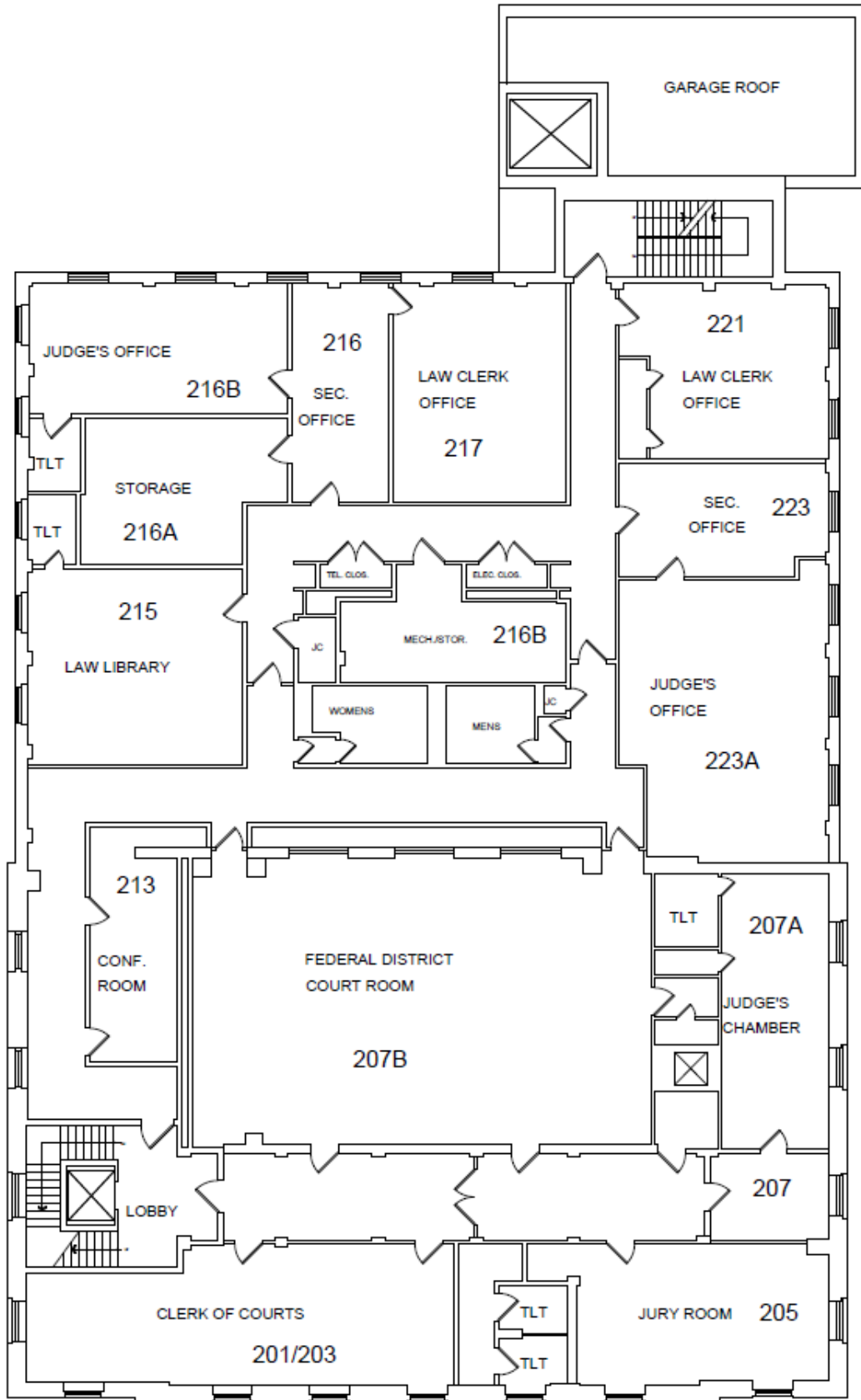
Interior Photos



Additional Photos



Floorplan – 2nd Floor



Floorplan – 3rd Floor

