



For Sublease

U.S. Bank Centre full floor office space available now

- Floor 33 - 22,146 SF
- Sublease term available through June 30, 2021
- \$38/RSF fully serviced starting rental rate plus TI allowance available
- High quality Class A improvements in the heart of Seattle's CBD
- LEED energy certified
- Fitness center with showers, lockers, and towel service
- Onsite childcare
- Building conference room
- 1/1,200 RSF parking ratio, secure bike storage
- Electric vehicle charging stations
- Onsite management, 24-hour security

**1420 Fifth Avenue
Seattle, WA**

Rob Nielsen

+1 206 607 1722

rob.nielsen@am.jll.com

Joe Gowan

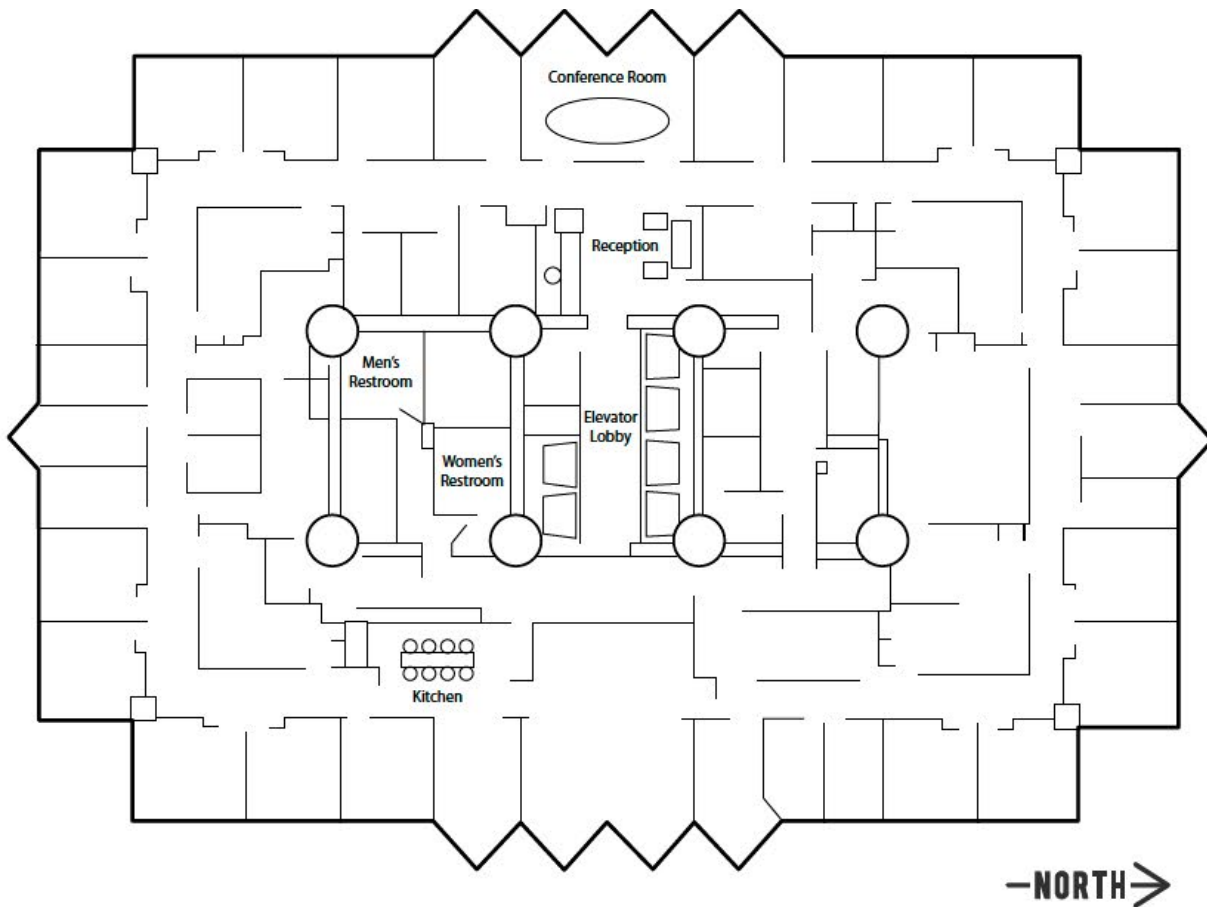
+1 206 607 1738

joe.gowan@am.jll.com



U.S. Bank Centre full floor office space available now

– Floor 33 - 22,146 SF



Location

- 1420 Fifth Avenue, Seattle
- Sweeping views of Elliott Bay, downtown Seattle, Lake Union, the Cascade and Olympic Mountains
- One block from Pacific Place, Westlake Center, and the Washington State Convention Center
- Across the street from the Washington Athletic Club, Red Lion Hotel, and Sheraton
- Excellent access to the Link Light Rail, the Seattle Monorail, King County Metro Buses, and the Seattle Streetcar
- Convenient Access to I-5 and Highway-99

On-site retail amenities

- Palomino
- Starbucks
- Toss'd
- Soups!
- Sushi Kudesai
- TCBY & Mrs. Fields
- Capelli's Barbershop
- Jimmy Johns
- Wildfire Taqueria
- US Bank
- Group Health

DISCLAIMER

Although information has been obtained from sources deemed reliable, Owner, Jones Lang LaSalle, and/or their representatives, brokers or agents make no guarantees as to the accuracy of the information contained herein, and offer the Property without express or implied warranties of any kind. The Property may be withdrawn without notice. If the recipient of this information has signed a confidentiality agreement regarding this matter, this information is subject to the terms of that agreement. ©2017. Jones Lang LaSalle. All rights reserved.

