

Sublease
Available

Two Union Square

601 Union Street • Seattle, WA



HIGHLIGHTS

- » Available Immediately
- » 23,974 RSF for Sublease
- » 31st & 32nd floors with beautiful water and city views
- » Term through 12/31/2023
- » Features perimeter private offices, internal private offices, open areas, multiple conference rooms, large lunch room, private showers, and internal staircase

AMENITIES

- » Convenient access to transportation corridors and I-5, I-90, and 520
- » Walking distance to quality restaurants, hotels and shopping
- » Connected to One Union Square by a fireplace lobby and underground pedestrian course



jll.com/seattle

Larry Almeleh

+1 206 521 2674

larry.almeleh@am.jll.com

Doug Hanafin

+1 206 521 2661

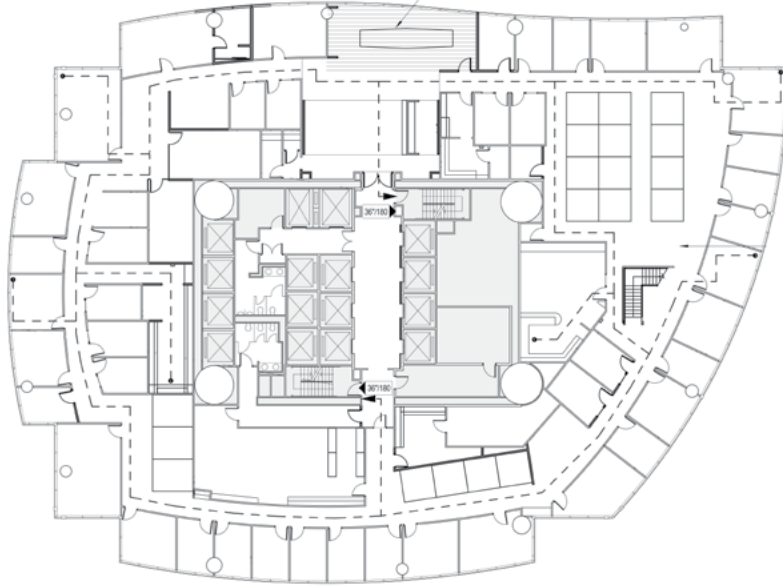
doug.hanafin@am.jll.com



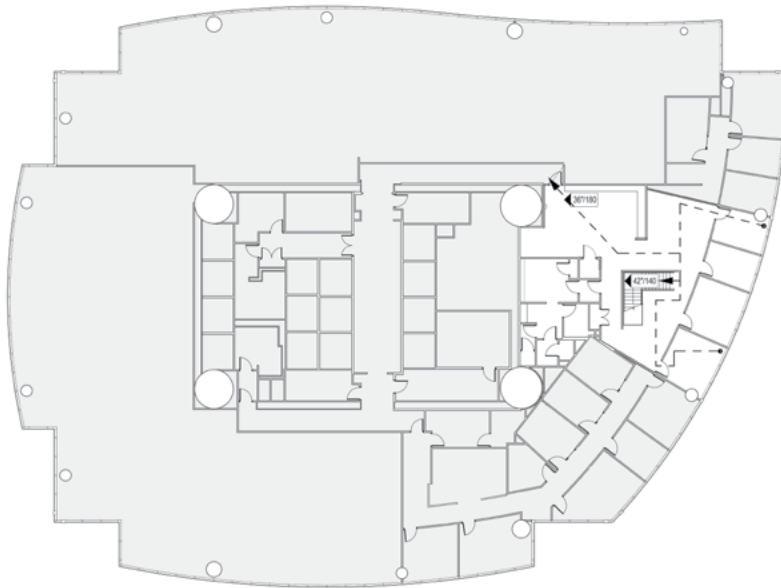
Sublease
Available

Two Union Square

601 Union Street • Seattle, WA



± 21,019 RSF
Floor 31



± 2,955 RSF
Floor 32

Larry Almeleh

+1 206 521 2674

larry.almeleh@am.jll.com

Doug Hanafin

+1 206 521 2661

doug.hanafin@am.jll.com



DISCLAIMER

Although information has been obtained from sources deemed reliable, Owner, Jones Lang LaSalle, and/or their representatives, brokers or agents make no guarantees as to the accuracy of the information contained herein, and offer the Property without express or implied warranties of any kind. The Property may be withdrawn without notice. If the recipient of this information has signed a confidentiality agreement regarding this matter, this information is subject to the terms of that agreement. ©2016. Jones Lang LaSalle. All rights reserved.