



For Lease

New Retail

1,200 – 6,200 s.f.

Highway 29 & 40th Street,
St. Paul, AB

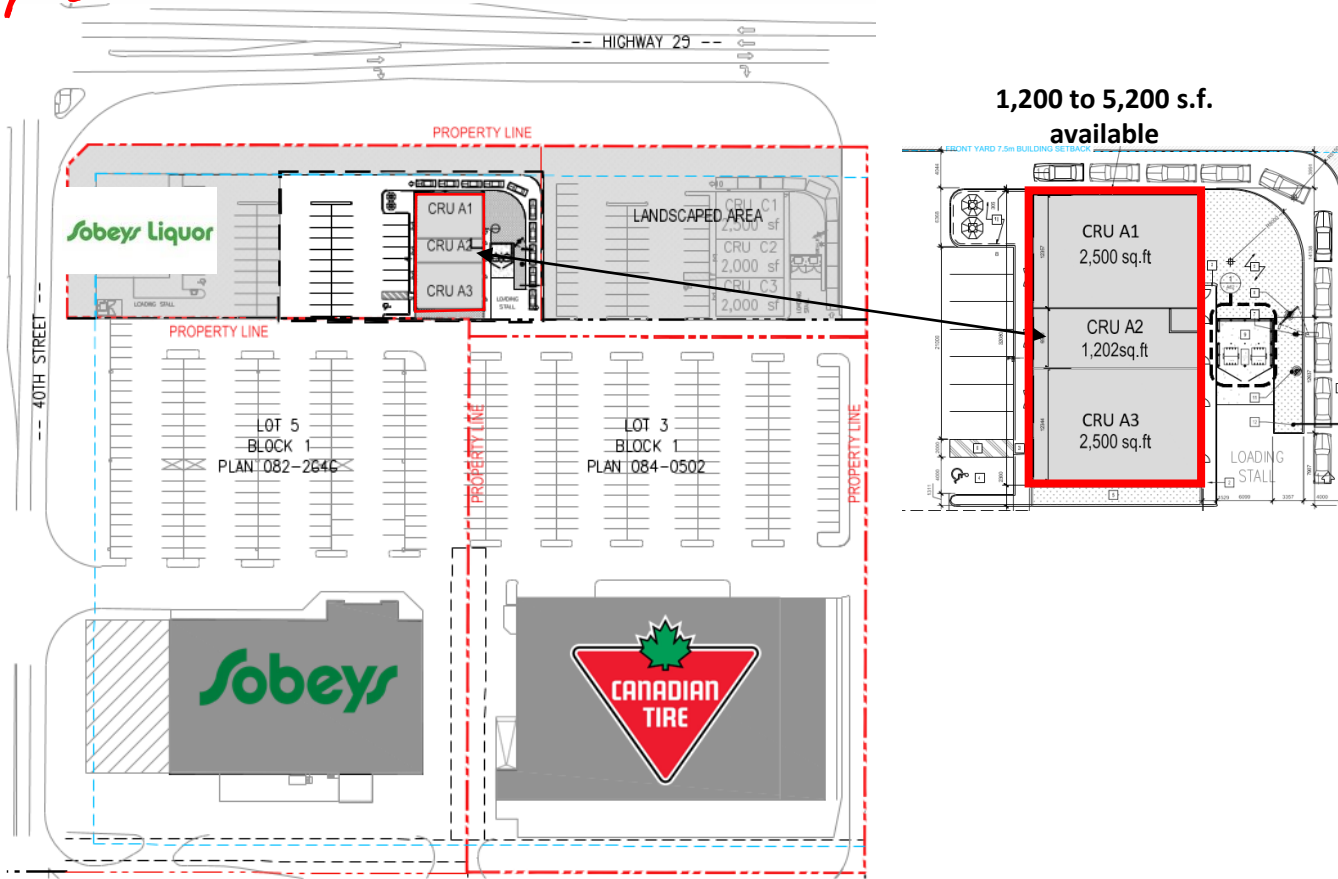
- 1,200 to 6,200 square feet available
- Excellent location in front of Canadian Tire and Sobeys
- Exceptional exposure to Highway 29 through St. Paul
- Available Fall 2019



JLL
2101, 10088 – 102nd Avenue NW
Edmonton, Alberta T5J 2Z1
Phone: (780) 328 – 2550

jll.ca

Site Plan



Details

Other businesses in the area: Co-op, Home Hardware, Dollarama, St. Paul Wellness Centre, St. Paul Value Drug Mart, Hampton Inn, St. Paul Dodge

Population: 5,827

Average Household Income (Family): \$108,115

For more information or to view, please contact:

Paul Raimundo
 +1 780 328 2575
 paul.raimundo@am.jll.com

Aerial



Although information has been obtained from sources deemed reliable, Owner, Jones Lang LaSalle, and/or their representatives, brokers or agents make no guarantees as to the accuracy of the information contained herein, and offer the Property without express or implied warranties of any kind. The Property may be withdrawn without notice. If the recipient of this information has signed a confidentiality agreement regarding this matter, this information is subject to the terms of that agreement. ©2018. Jones Lang LaSalle. All rights reserved.
 *Sales Representative **Broker.