

# For Lease

**Fully fenced, graveled and gated storage yard with two access points and perimeter lighting**

- Municipal Addresses:
  - 9203 127 Avenue
  - 9115 127 Avenue
  - 9035 127 Avenue
- Legal Description: Plan: 0520041; Block: 60A; Lots: 7, 8 & 9
- Site Size: 2.99 acres
- Zoning: DC2
- Lease Rate: \$1.25 PSF Gross
- Taxes (2020): \$34,170.40 (total for all 3 lots)

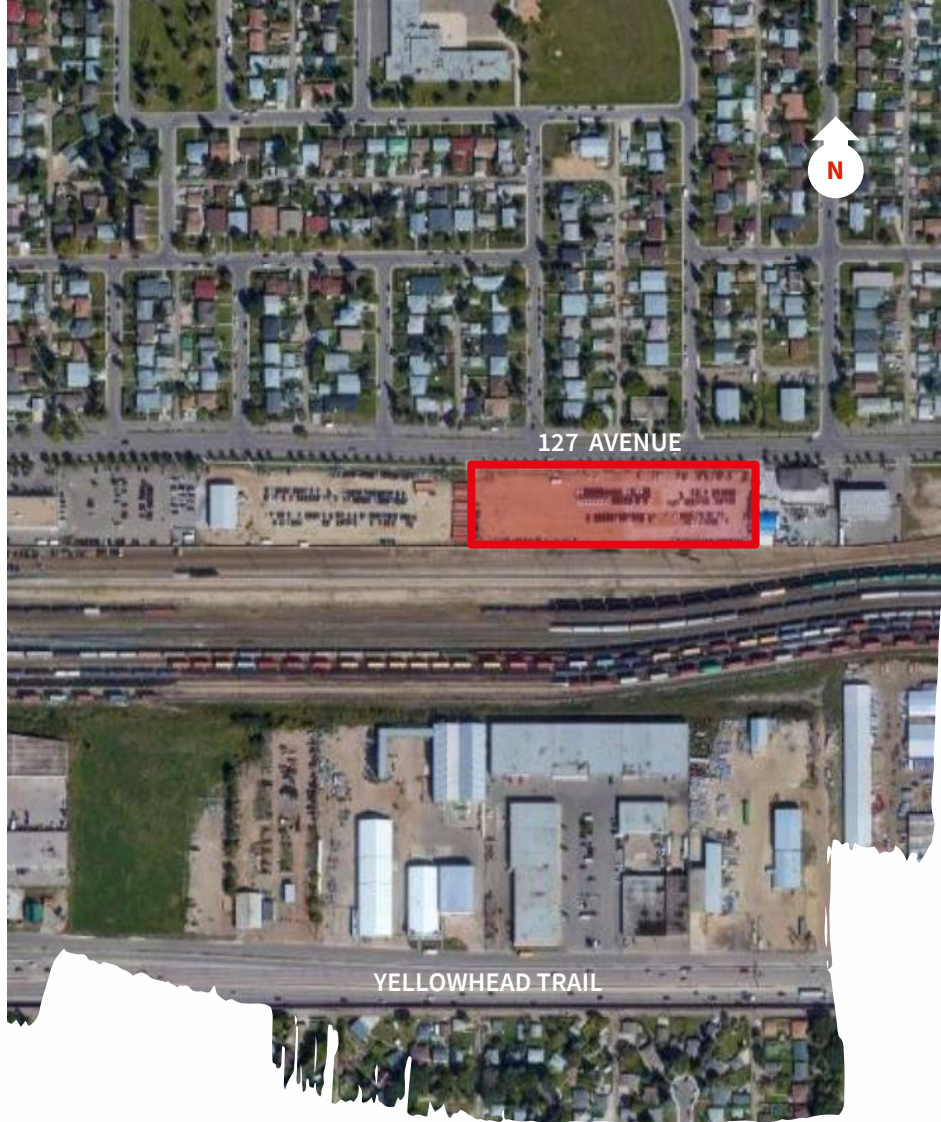
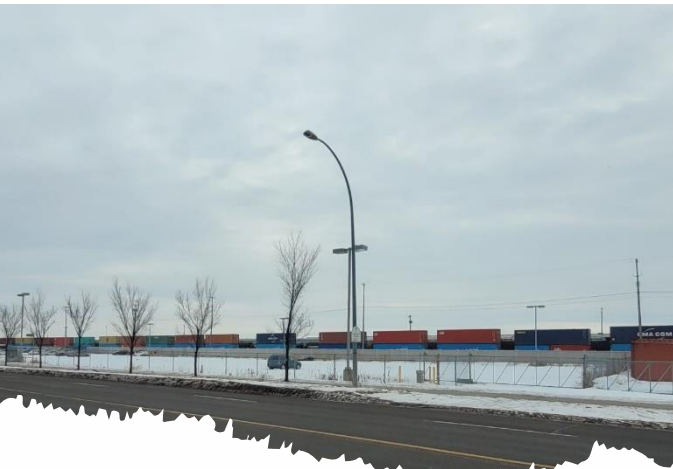
**127<sup>th</sup> Avenue Land**  
9203 127 Avenue  
Edmonton, AB

---

**Andres Mateluna**  
Associate Vice President  
+1 780 328 2557  
[Andres.mateluna@am.jll.com](mailto:Andres.mateluna@am.jll.com)

**David Kraus**  
Senior Vice President  
+1 780 328 2557  
[David.kraus@am.jll.com](mailto:David.kraus@am.jll.com)





**Excellent central location with great access to many major transportation routes such as 97 Street, 82 Street, and Yellowhead Trail**

**Andres Mateluna**  
Associate Vice President  
+1 780 328 2557  
[Andres.mateluna@am.jll.com](mailto:Andres.mateluna@am.jll.com)

**David Kraus**  
Senior Vice President  
+1 780 328 2557  
[David.kraus@am.jll.com](mailto:David.kraus@am.jll.com)

**JLL Edmonton Industrial**  
Suite 2101, TD Tower  
10088 102 Avenue NW  
Edmonton, Alberta T5J 2Z1

DISCLAIMER: Although information has been obtained from sources deemed reliable, neither Owner nor JLL makes any guarantees, warranties or representations, express or implied, as to the completeness or accuracy as to the information contained herein. Any projections, opinions, assumptions or estimates used are for example only. There may be differences between projected and actual results, and those differences may be material. The Property may be withdrawn without notice. Neither Owner nor JLL accepts any liability for any loss or damage suffered by any party resulting from reliance on this information. If the recipient of this information has signed a confidentiality agreement regarding this matter, this information is subject to the terms of that agreement. ©2021. Jones Lang LaSalle IP, Inc. All rights reserved.

