

LAKEFRONT 8

3750 Priority Way South Drive
Indianapolis, IN 46240

- Total size: 57,713 sf
- Parking: 4.3/1,000 sf (251 spaces)
- Year Built: 1990
- Stories: 2
- Class: A



LAKEFRONT AT KEYSTONE



PARK HIGHLIGHTS

- Peaceful lake in the middle of the park, surrounded by picnic areas and a walking trail
- Micro-market vending stations in several buildings throughout the park
- Free wi-fi equipped lobbies
- On-site building management
- I-465 visibility and signage available
- Day care center within the park
- Conference facilities available for use
- Free bike-share program provided by Zagster
- Tenant-exclusive, 6,000 s.f. fitness center with fitness trainer on-site
- Easy access to 96th Street, Keystone Avenue and I-465

lakefrontatkeystone.com

TAMMY FAULK
+1 317 810 7174
tammy.faulk@am.jll.com

JOHN ROBINSON
+1 317 810 7172
john.robinson@am.jll.com

Owned by:



Leased by:



LAKEFRONT 8

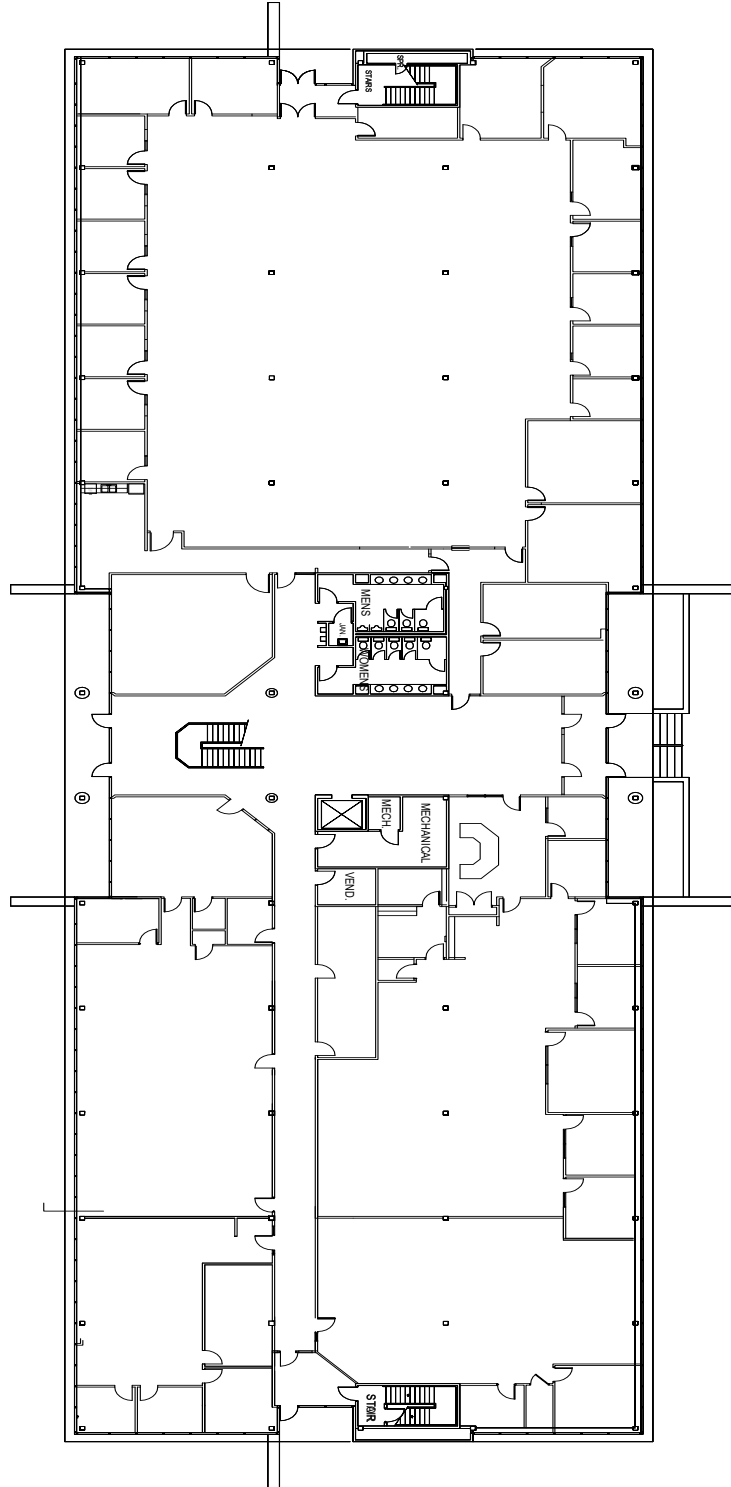
3750 Priority Way South Drive
Indianapolis, IN 46240



LAKEFRONT

AT KEYSTONE

TYPICAL FLOORPLAN



TAMMY FAULK
+1 317 810 7174
tammy.faulk@am.jll.com

JOHN ROBINSON
+1 317 810 7172
john.robinson@am.jll.com

Owned by:



Leased by:

