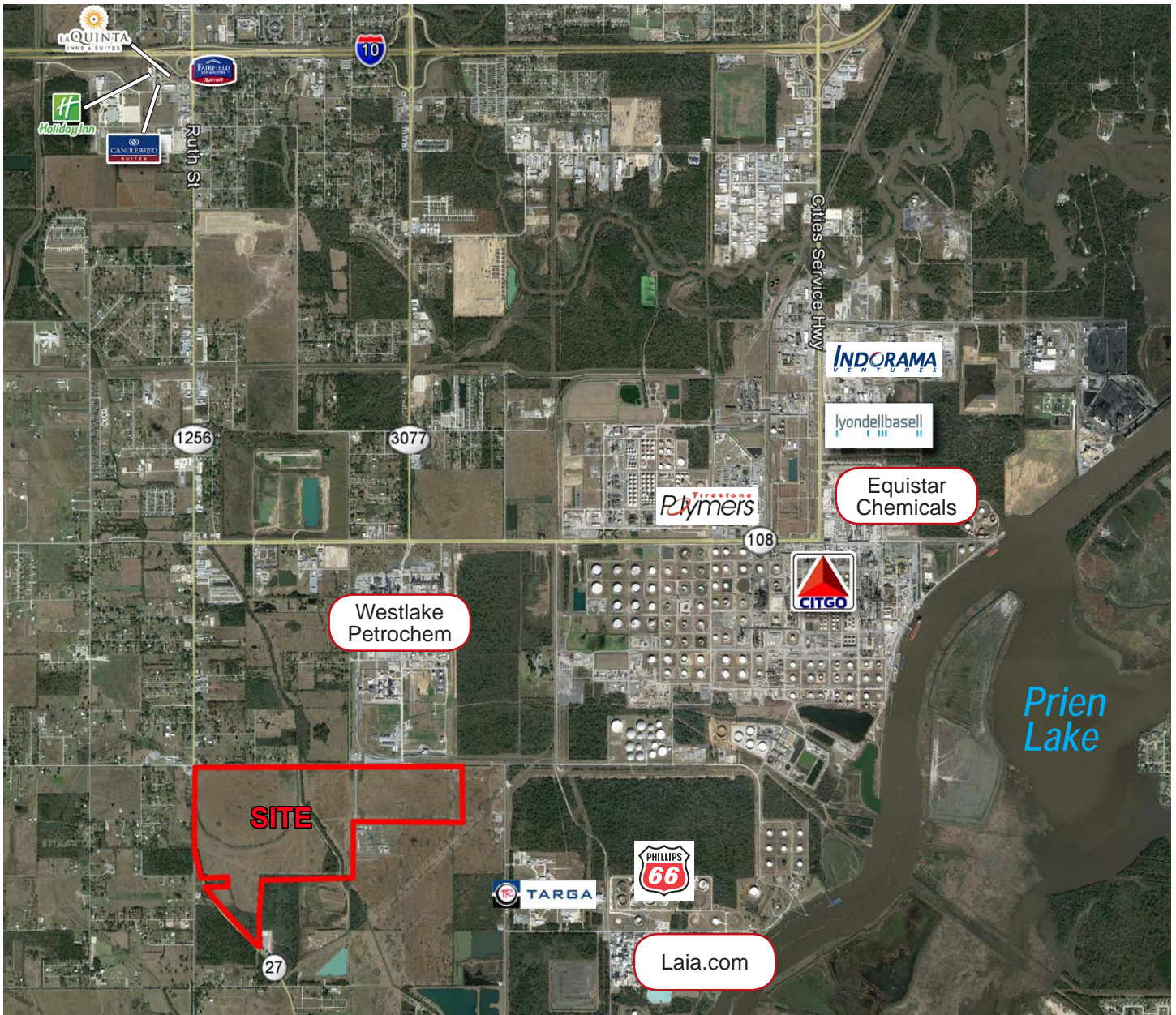


±352.13 ACRES

LAND FOR SALE

Highway 27 &
East Dave Dugas Rd
Sulphur, LA

jllretail.com



For more information, contact

SIMMI JAGGI
Senior Vice President
+1 713 888 4098
simmi.jaggi@am.jll.com

ELIZABETH CLAMPITT
Vice President
+1 713 888 4075
elizabeth.clampitt@am.jll.com

RICHARD JUGE, CCIM SIOR
Principal | REMAX
+1 504 915 8877
rjuge@nolacommercial.com

Trust our **retail**Intelligence.

±352.13 Acres | Land for Sale

Hwy 27 & E. Dave Dugas Rd | Sulphur, LA 70665

SITE View



Overview

Location

- Located ±1.5 miles south of Interstate 10 and ±9 miles west of Lake Charles is a ±352.13-acre, port-based site located in Sulphur, Louisiana off of the shore of Prien Lake. This land's likely use in the future is redevelopment into single-family residential, commercial or industrial/distribution.
- The Lake Charles Regional Airport is located southeast of the site. This airport offers nonstop flights to Dallas Fort Worth International Airport and Houston Intercontinental Airport and serves corporate, governmental and private clients.

Industries in Sulphur

Construction, machining, manufacturing and chemical manufacturing

Largest Area Employers

Citgo Petroleum Corp, Guard Gate Lube Plant, Golden Nugget Casino, Calcasieu Parish School System, Turner Industries, Axiall Corporation

Price

Please contact for pricing information

For more information, contact

SIMMI JAGGI

Senior Vice President
+1 713 888 4098
simmi.jaggi@am.jll.com

ELIZABETH CLAMPITT

Vice President
+1 713 888 4075
elizabeth.clampitt@am.jll.com

RICHARD JUGE, CCIM SIOR

Principal | REMAX
+1 504 915 8877
rjuge@nolacommercial.com

