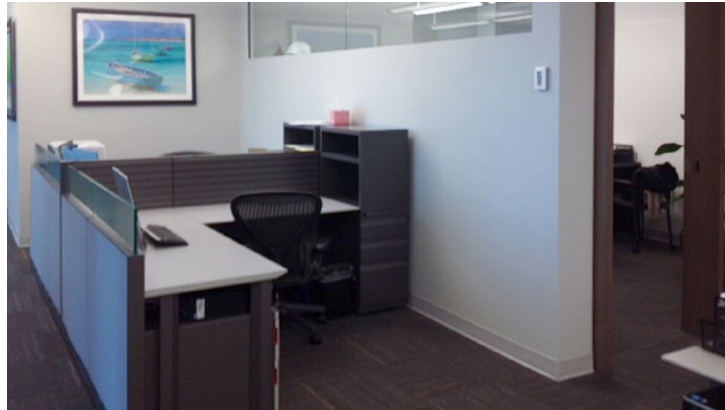


FOR  
SUB-SUBLEASE

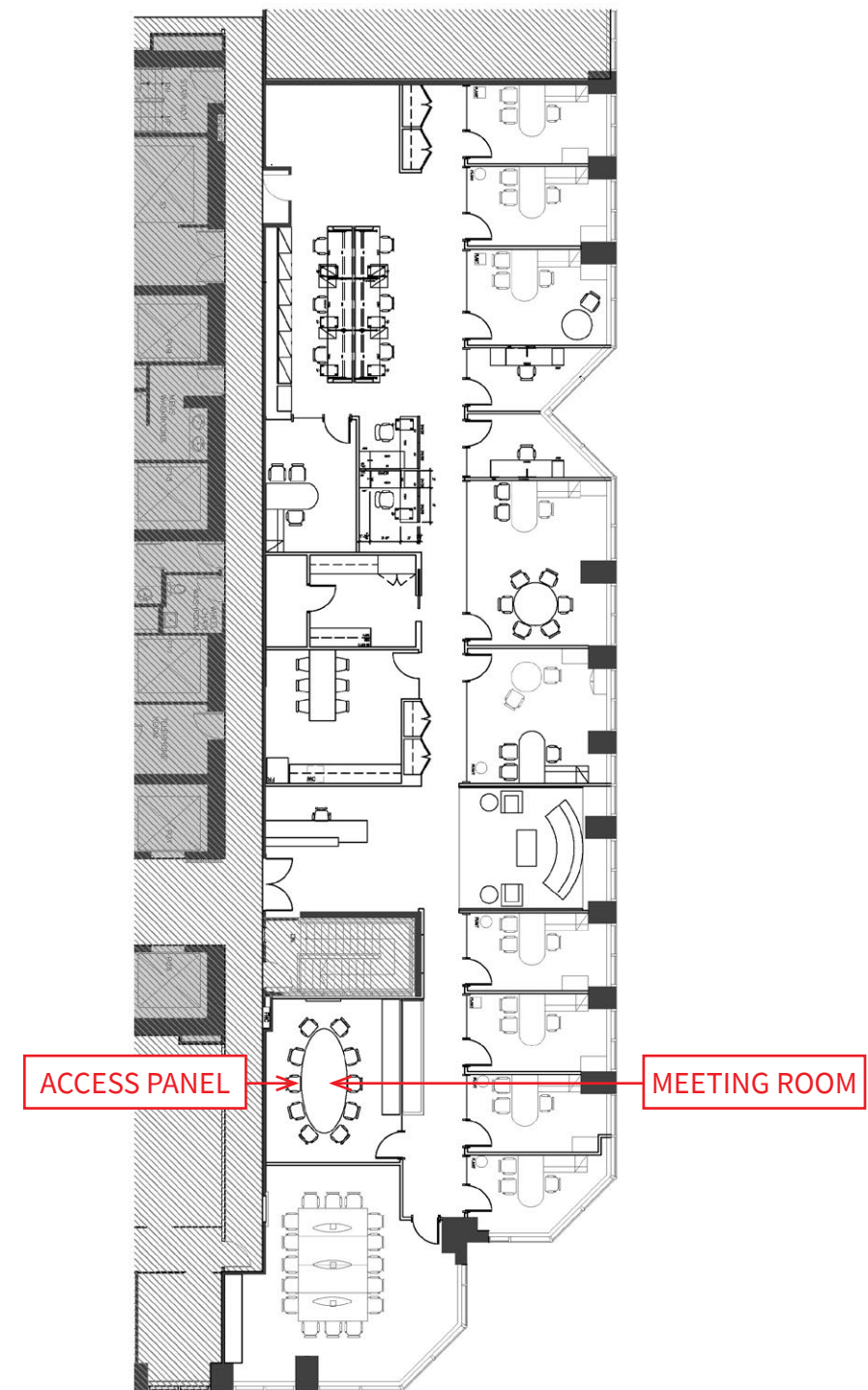


SUITE 2450  
**181 BAY STREET**  
TORONTO, ON

# 181 BAY STREET



## FLOOR PLAN



## PROPERTY DETAILS

- **Floor:** 24<sup>th</sup>
- **Suite:** 2450
- **Size:** 6,336 SF
- **Availability:** Immediate
- **Expiry:** October 29, 2021
- **Net Rent:** Contact Listing Agents
- **Additional Rent:** \$30.54 PSF (2020 est.)

## PROPERTY HIGHLIGHTS

- Short-term, turnkey sub-sublease with high quality improvements
- Office building in heart of the Financial Core
- Connected to the underground PATH system
- Steps to Union Station - TTC, GO Transit and UP Express to Pearson Airport
- Surrounding theatres, convention centre and other amenities, including Rogers Centre, Air Canada Centre and the Harbourfront area

**FOR  
SUB-SUBLEASE**



**For more information, contact:**

**Ali Torabipour\***

Associate Vice President

+1 416 238 4743

[Ali.Torabipour@am.jll.com](mailto:Ali.Torabipour@am.jll.com)

**Jonathan Redrupp\***

Senior Vice President

+1 416 803 8425

[Jonathan.Redrupp@am.jll.com](mailto:Jonathan.Redrupp@am.jll.com)