

BONUS COMMISSION: \$1.50 PSF/ANNUM



For Sublease

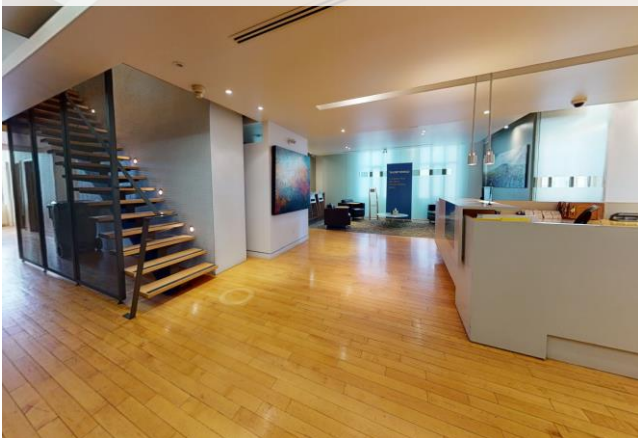
372 Bay Street



Rare Four (4) Outdoor Terrace Opportunity



Direct Elevator Exposure & Internal Staircase



PROPERTY DETAILS

AVAILABLE SPACE: 21st & 22nd Floors = 7,944 SF
(21st = 4,009 SF & 22nd Floor = 3,935 SF)

AVAILABLE:
Immediate

TERM:
Expires April 29th, 2022

NET RENT:
Negotiable

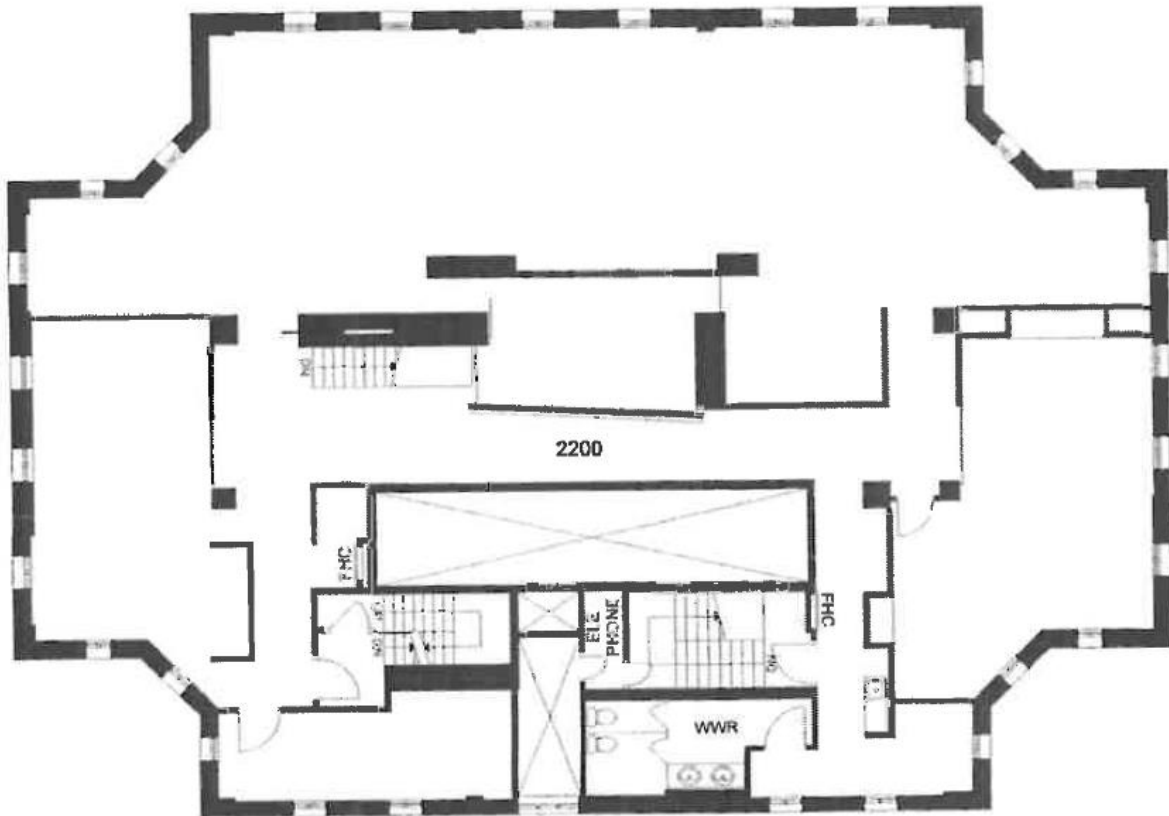
ADDITIONAL RENT:
\$21.55 PSF (2021 estimate)

SPACE HIGHLIGHTS

- Unique Space Opportunity in heart of Financial Core
- Top Two (2) Floors of Building with Internal Staircase & Four (4) Outdoor Terraces
- Elevators open directly into reception
- Built-out space, open area, reception, 2 kitchenettes, and private washroom
- FF&E potentially available

For Sublease

372 Bay Street
22nd Floor – 3,935 SF



For more information, contact:

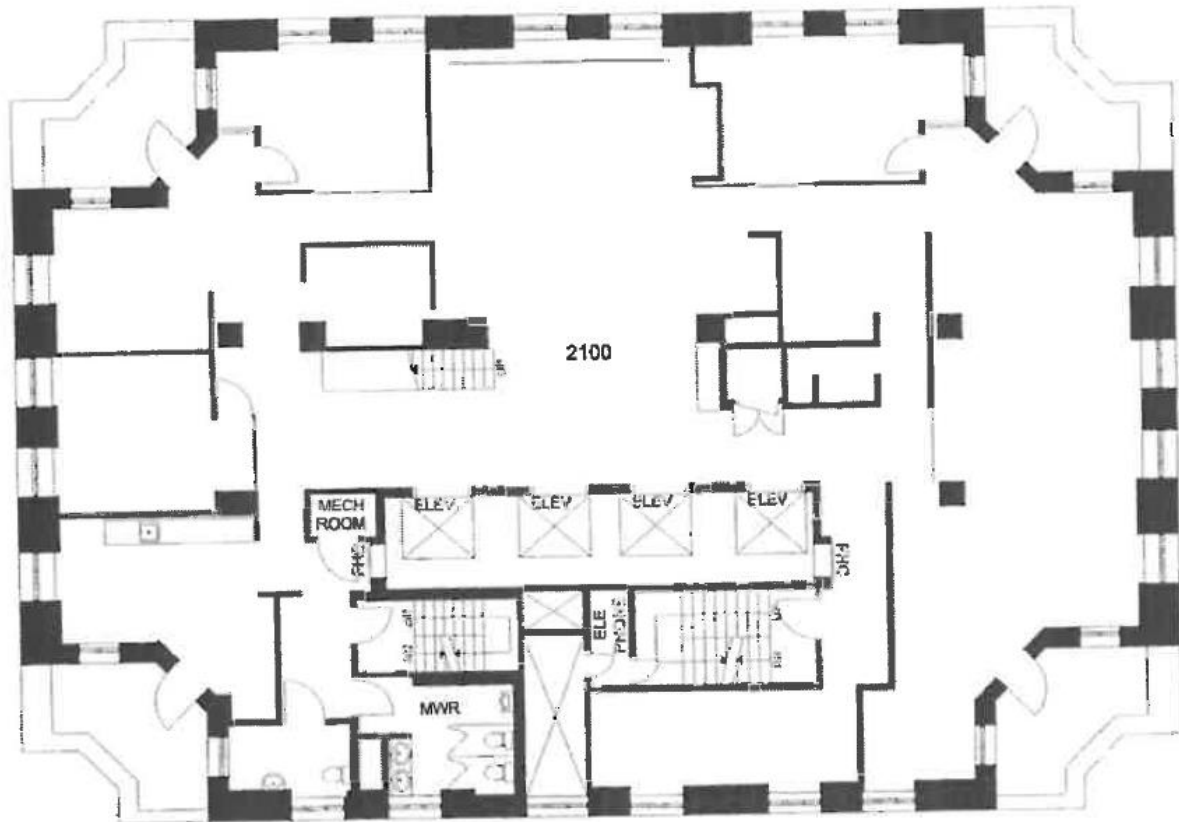
Michael Case *
Executive Vice President
+1 (416) 892 2273
michael.case@am.jll.com

Michael Seetner *
Associate Vice President
+1 (647) 938 5500
michael.seetner@am.jll.com

Ethan Case *
Digital Associate, Office Leasing
+1 (647) 268 0684
ethan.case@am.jll.com

For Sublease

372 Bay Street
21st Floor – 4,009 SF



For more information, contact:

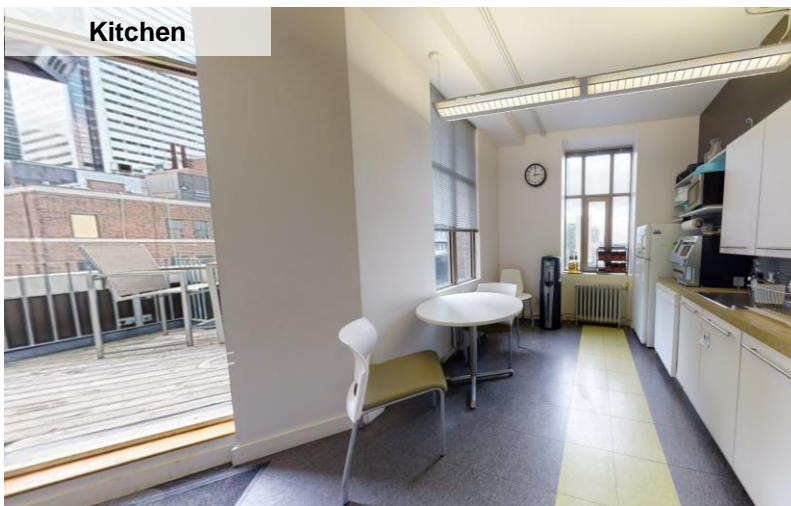
Michael Case *
Executive Vice President
+1 (416) 892 2273
michael.case@am.jll.com

Michael Seetner *
Associate Vice President
+1 (647) 938 5500
michael.seetner@am.jll.com

Ethan Case *
Digital Associate, Office Leasing
+1 (647) 268 0684
ethan.case@am.jll.com

For Sublease

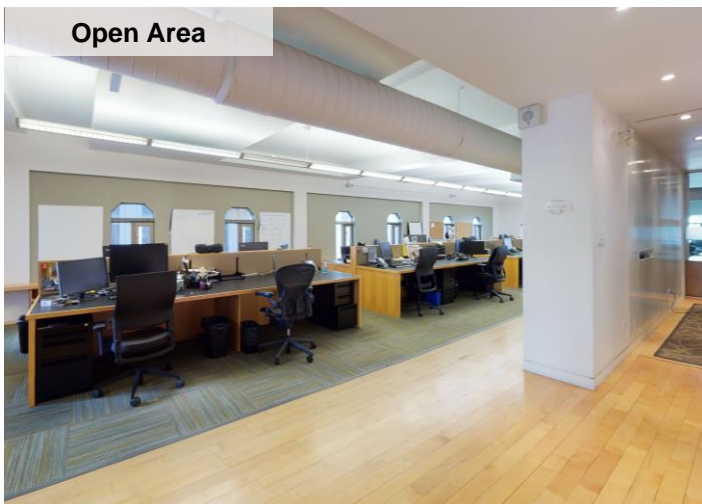
372 Bay Street
21st & 22nd Floors – 7,944 SF



Kitchen



Meeting Room



Open Area



Boardroom

For more information, contact:

Michael Case *
Executive Vice President
+1 (416) 892 2273
michael.case@am.jll.com

Michael Seetner *
Associate Vice President
+1 (647) 938 5500
michael.seetner@am.jll.com

Ethan Case *
Digital Associate, Office Leasing
+1 (647) 268 0684
ethan.case@am.jll.com