

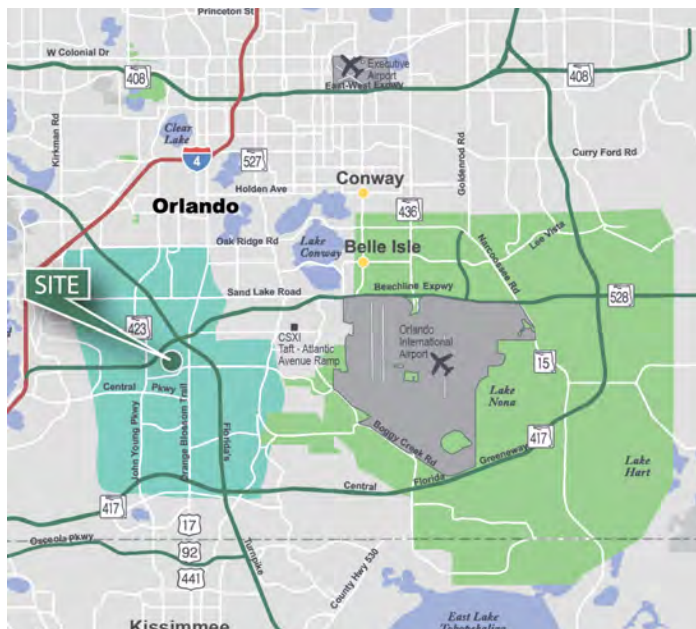
100,000 - 242,160 SF

Industrial Space For Lease



Prologis Orlando Central Park South

2200 Consulate Drive
Orlando, FL 32837 USA



LOCATION

- Immediate Access to Orange Blossom Trail (US 441), the Beachline Expressway (SR 528) and Florida's Turnpike
- Easy Access to Interstate 4, John Young Parkway and Sand Lake Road

FACILITY

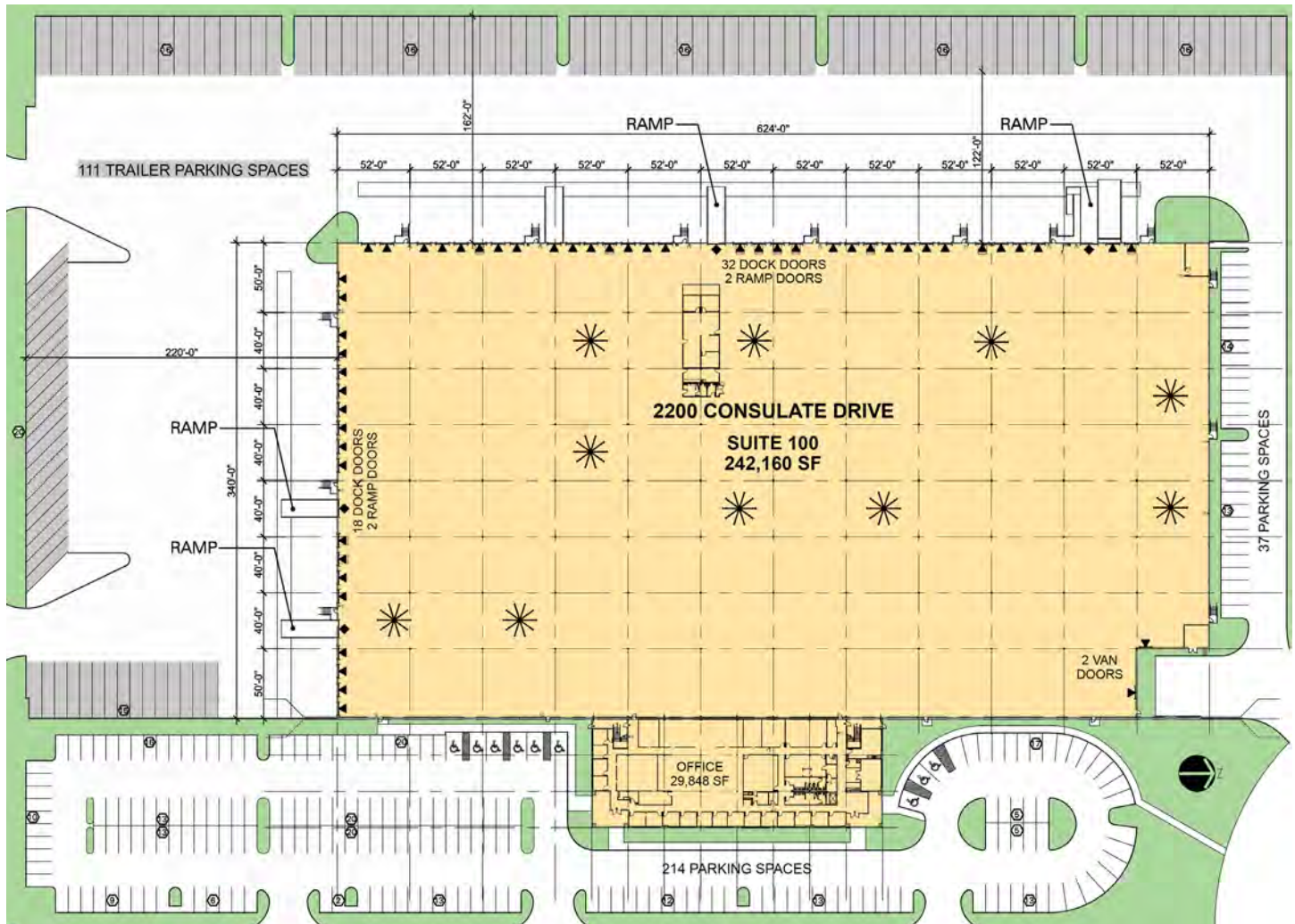
- 242,160 SF Total Building Size
- 29,848 SF Office Space:
14,924 SF on 1st & 2nd Floors w/Elevator
- 212,312 SF Warehouse Space
- Built in 1997
- Tilt-Wall Construction
- Slab: 6", Vapor Barrier, 4K psi (Warehouse)
- Cross Load Design
- 30' Clear Height
- 340' Building Depth
- 52' x 40' Column Spacing (Typical)
- 50' Speed Bay Depth
- 162' - 220' Truck Court
- 251 Employee Parking Spaces
(Separated from Truck Traffic)
- 111 Trailer Parking Spaces
- Roof Installed in 2017: TPO, R9.82



Scan for Website

100,000 - 242,160 SF

Industrial Space For Lease



SUITE 100

- (39) 9' x 10' Dock Doors with Edge of Door Levelers
- (11) 9' x 10' Dock Doors with Pit Levelers
- (4) 12' x 16' Drive-In Doors w/Concrete Ramps
- (2) Van Height Doors
- LED Lighting System Installed in 2018
- ESFR Sprinkler System
- (10) "Big Ass Fans" in Warehouse
- Ventilation: 2.5 Air Changes per Hour
- Power: 1,600 Amps 277 / 480
- Property is Fenced and Secure
- 3 Means of Egress for More Efficient Truck Flow

LEGEND

- AVAILABLE
- LEASED
- ▼ DOCK DOOR
- ◆ DRIVE-IN DOOR



Jones Lang LaSalle
 Mike Borling
 mike.borling@am.jll.com
 +1 407.982.8768 phone
 250 S. Orange Avenue, Suite 700P
 Orlando, FL 32801 USA

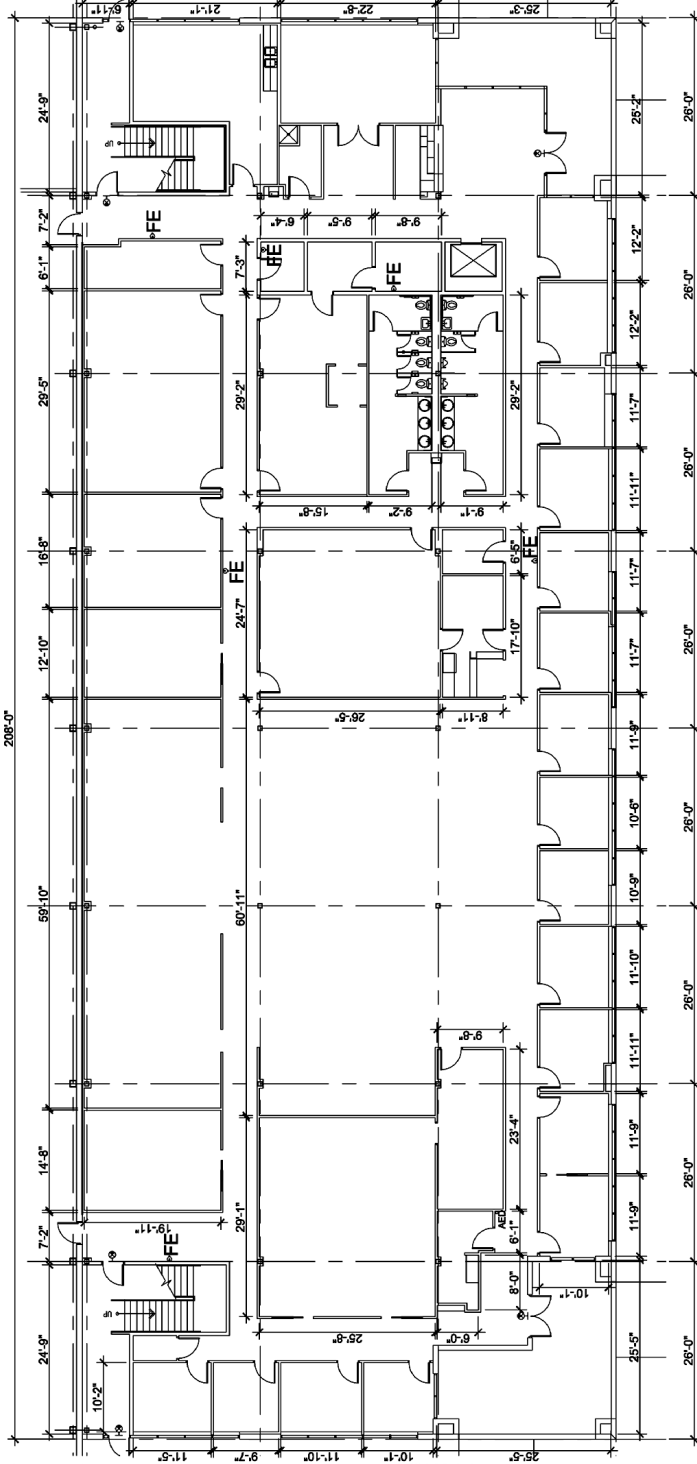
Jones Lang LaSalle
 Josh Lipoff
 j.lipoff@am.jll.com
 +1 407.982.8633 phone
 250 S. Orange Avenue, Suite 700P
 Orlando, FL 32801 USA

Prologis
 Brendon Dedekind, CCIM
 bdedekind@prologis.com
 +1 407.244.7105 phone
 +1 407.495.0178 cell
 300 S. Orange Avenue, Suite 1110
 Orlando, FL 32801 USA

PROLOGIS
 ORLANDO CENTRAL PARK SOUTH
 2200 Consulate Drive
 Orlando, FL 32837

1ST FLOOR OFFICE: 14,924 SF
 2ND FLOOR OFFICE: 14,924 SF
 WAREHOUSE: 212,312 SF
 TOTAL: 242,160 SF

FIRST FLOOR OFFICE PLAN



Prologis Orlando Central Park South



2200 Consulate Drive Orlando, FL 32837 USA

