



For Sublease

67,540 SF Industrial Space Available

**13675 Darice Parkway,
Strongsville, OH 44149**

Building size:	67,540 SF	Clear height:	24'
Building type:	Industrial	Docks:	11 ext.
Year built:	1998	Drive-ins:	4
Power:	1,200a Heavy	Parking:	75 spaces
Lease rate:	\$5.50/ NNN	Sprinklers:	ESFR

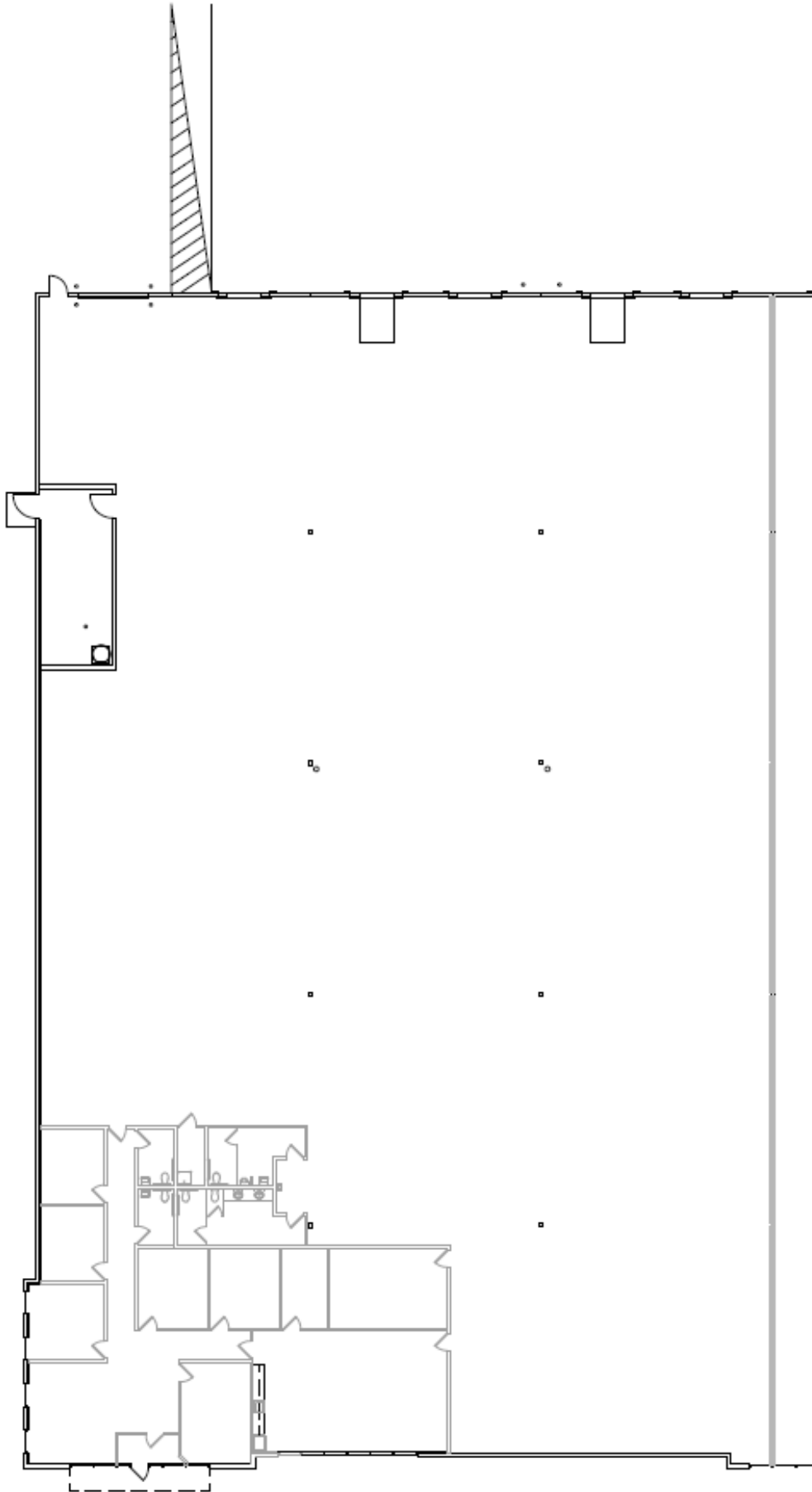
David Stecker
+1 216 937 1965
david.stecker@am.jll.com

Joe Messina
+1 216 937 4386
joe.messina@am.jll.com

DISCLAIMER
Although information has been obtained from sources deemed reliable, neither Owner nor JLL makes any guarantees, warranties or representations, express or implied, as to the completeness or accuracy as to the information contained herein. Any projections, opinions, assumptions or estimates used are for example only. There may be differences between projected and actual results, and those differences may be material. The Property may be withdrawn without notice. Neither Owner nor JLL accepts any liability for any loss or damage suffered by any party resulting from reliance on this information. If the recipient of this information has signed a confidentiality agreement regarding this matter, this information is subject to the terms of that agreement. ©2018 Jones Lang LaSalle IP, Inc. All rights reserved.

13675 Darice Parkway, Strongsville, OH

Floorplan



13675 Darice Parkway, Strongsville, OH

Building Photos



Site Map

