

± 10,000 SF Available
Sublease Price: Upon Request
Property Highlights

- Dense urban location
- Shadow anchored by Dave's Market
- Freestanding building
- Excellent parking
- 45 free spaces available

Amenities

- Area Retailers: Dave's Market Dunkin' Donuts
Citizens Bank USPS City Hall

Traffic

- I-95 @ Laurens Street S 187,900 (2017) .53 miles
- Reservoir & Melrose Street SW 27,000 (2017) .66 miles

Demographics

	1 mi radius	3 mi radius	5 mi radius
Population	18,352	145,630	330,193
Households	7,707	54,877	129,869
Population Median Age	38.7	36.5	36.3
5 Yr Pop Growth (Total%)	1.0%	1.8%	1.6%

5 Mile Information

233,402

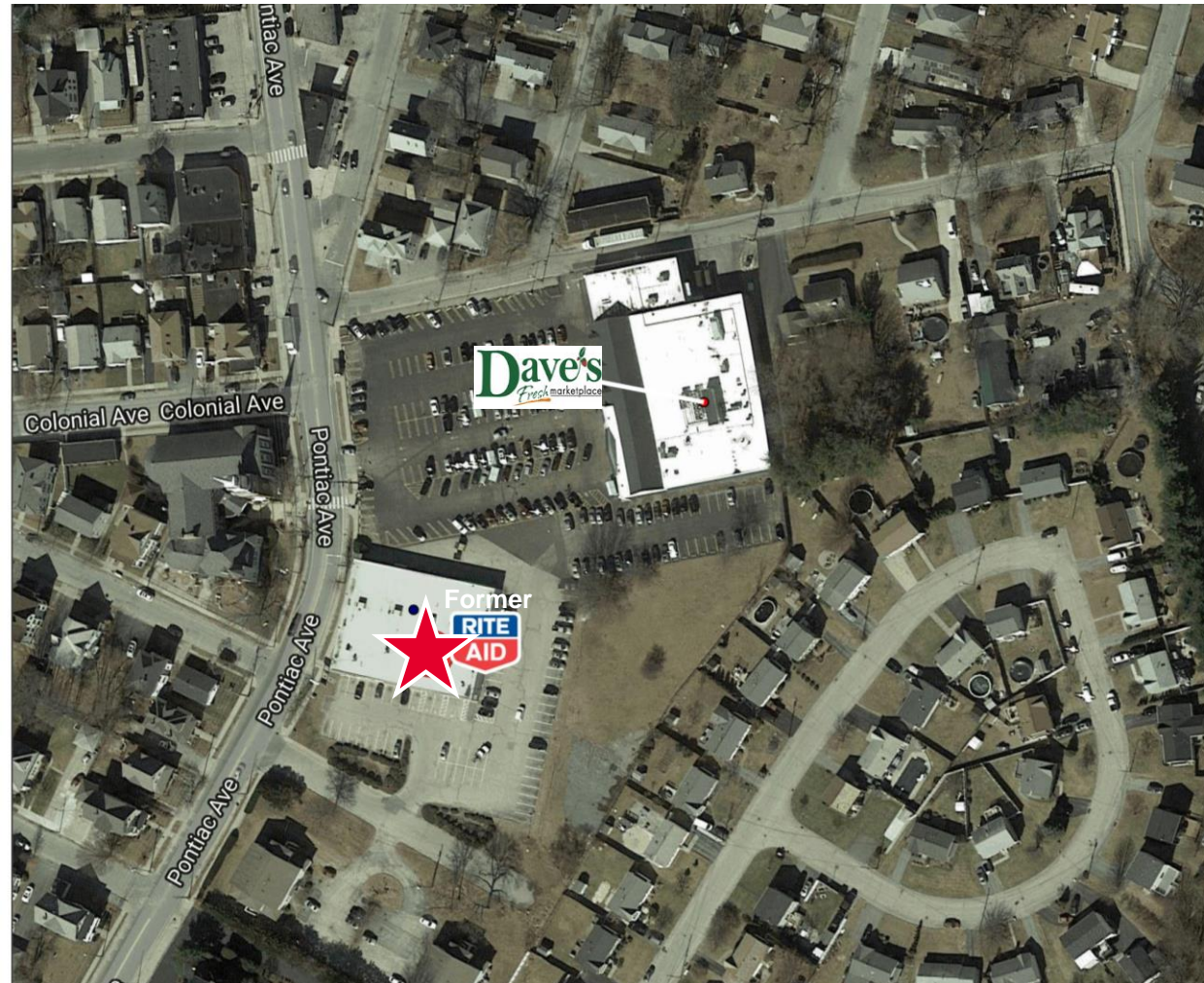
Employees


\$56,335

Median HH Income


17,607

Businesses

SUBLEASE – FREESTANDING RETAIL SPACE


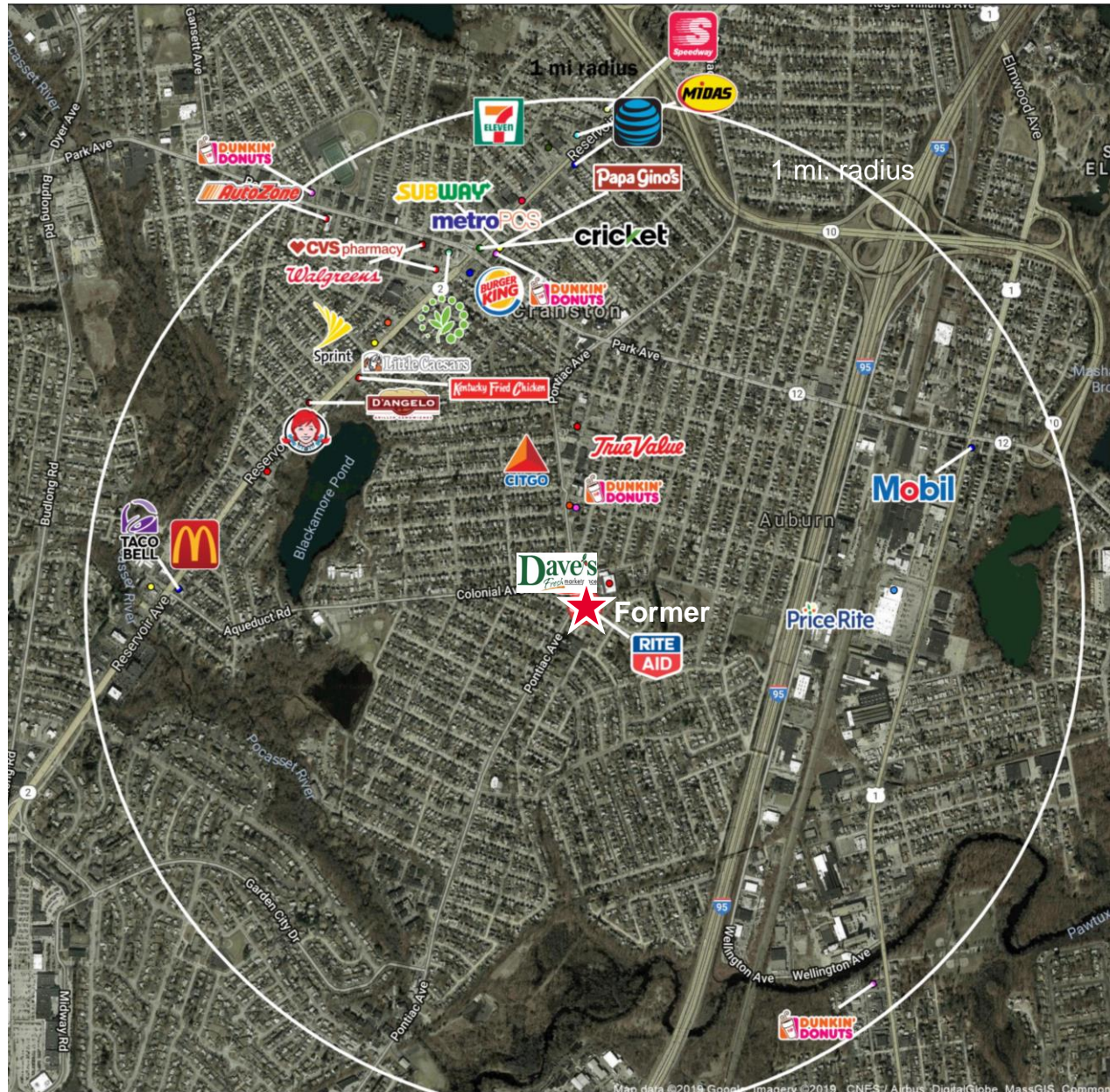
For more information, please contact:

Bill Greene
 Partner
 401.273.7429
 bgreene@hayessherry.com

 146 Westminster Street, 2nd floor
 Providence, RI 02903
 phone: 401 273 1980
 www.hayessherry.com

Trade Aerial

Property Photos



For more information, contact:
Bill Greene
Partner
401-273-7429
bgreene@hayessherry.com