



For Lease

Developed space available immediately

Energy Square, 10109 106 Street, Edmonton, Alberta



Highlights

- Under new ownership and property management
- Several public transit options nearby including LRT
- Walking distance to all amenities
- Conference room for tenant use
- On site security
- Numerous options available



Details

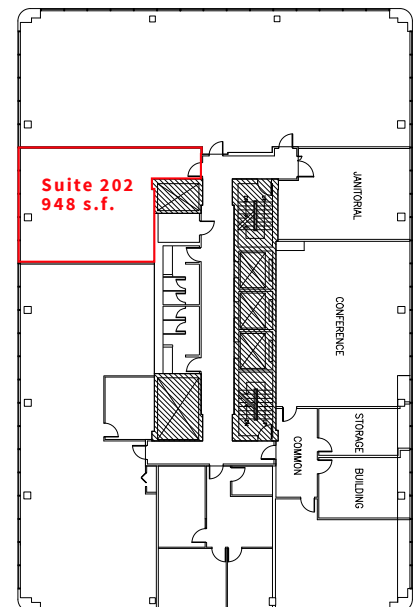
AVAILABLE SUITES:	Suite 202	948 s.f.
	Suite 303	903 s.f.
	*Suite 304	1,836 s.f.
	*(Available April, 2019)	
	Suite 307	1,146 s.f.
	Suite 401	556 s.f.
	Suite 402	2,421 s.f.
	Suite 406	2,294 s.f.
	Suite 500	1,769 s.f.
	Suite 501	1,205 s.f.
	Suite 502	2,848 s.f.
	Suite 504	2,613 s.f.
	Suite 900	10,890 s.f.
	Suite 1001	1,398 s.f.
	Suite 1010	1,302 s.f.
	*Suite 1200	4,830 s.f.
	* Walk up	



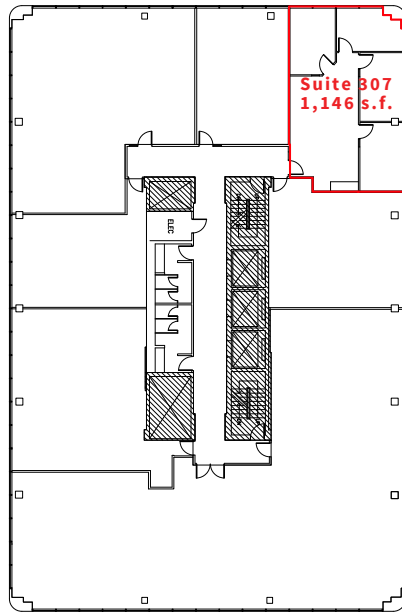
LEASE RATE:	\$15.00
OPERATING COSTS:	\$13.65 p.s.f. (2019)
PARKING:	1 stall per 1,000 s.f

2nd Floor

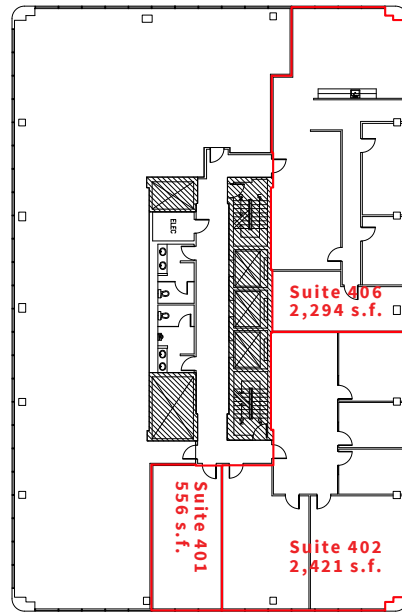
Floor Plans



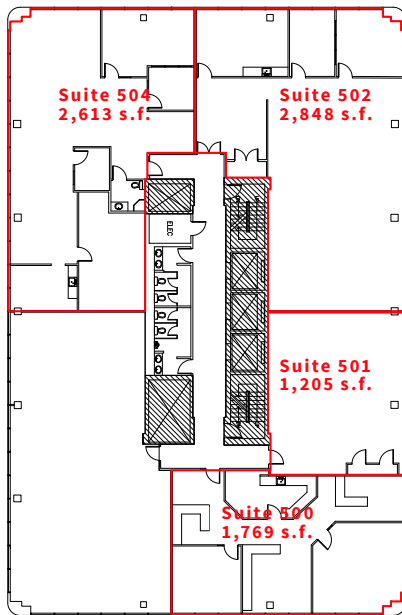
3rd Floor



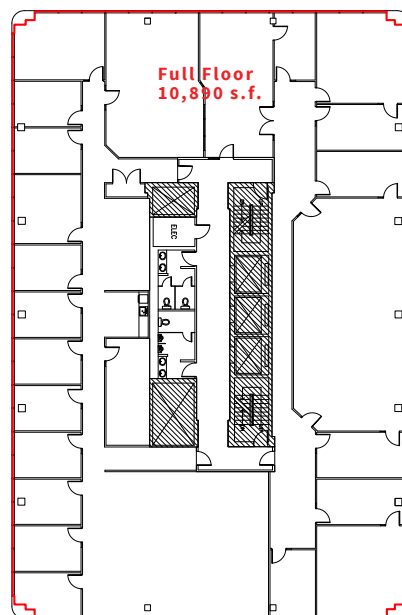
4th Floor



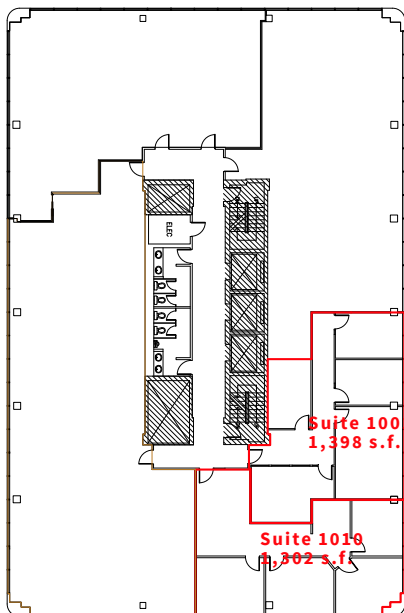
5th Floor



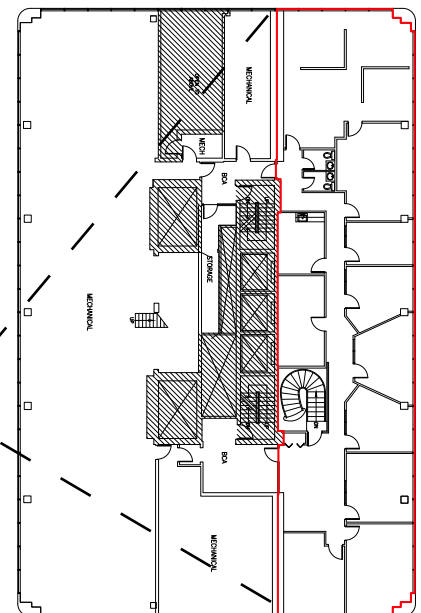
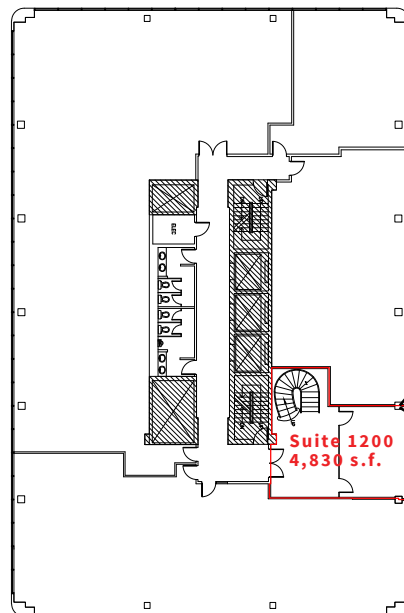
9th Floor
Full Floor



10th Floor



12th Floor



For office space inquiries, please contact:

Carolyn Bull

+1 780 328 2553

carolyn.bull@am.jll.com

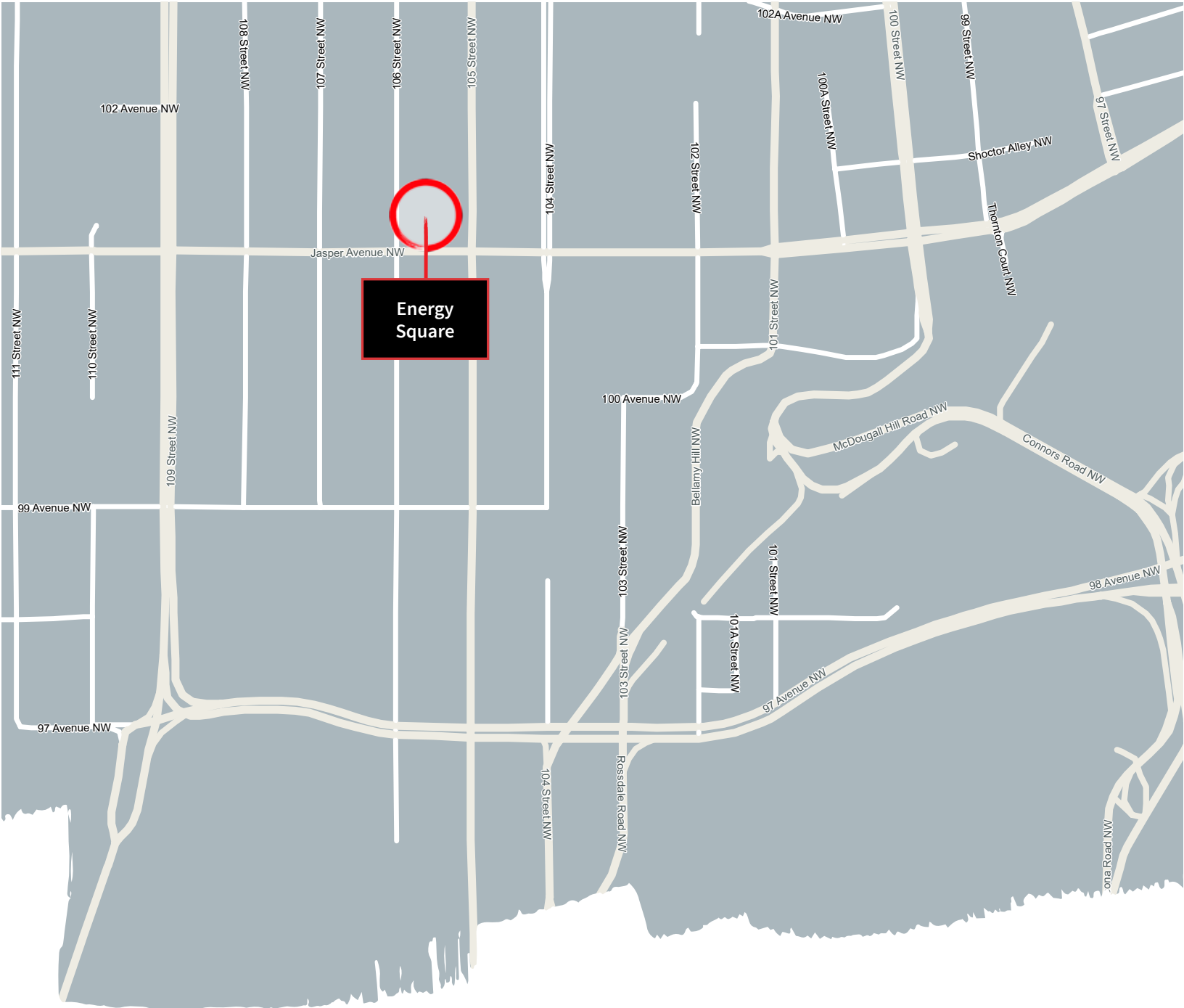
Chad Brennand

+1 780 328 2552

chad.brennand@am.jll.com

JLL

2101, 10088 102 Avenue NW



Although information has been obtained from sources deemed reliable, Owner, Jones Lang LaSalle, and/or their representatives, brokers or agents make no guarantees as to the accuracy of the information contained herein, and offer the Property without express or implied warranties of any kind. The Property may be withdrawn without notice. If the recipient of this information has signed a confidentiality agreement regarding this matter, this information is subject to the terms of that agreement.

©2018. Jones Lang LaSalle. All rights reserved.