



# For Sublease

## Property Overview

Space	2,254 SF
Term	Lease Expires on August 31, 2020
Availability	Immediately
Rental Rate	\$25.00 per RSF NNN
Operating Expenses	\$16.60 per RSF

### Building Features

- Structured Parking Garage
- Class A Building
- Nearby Hike and Bike Trails
- On-site Management Office
- Class A Office
- Downtown and Greenbelt Views

## Barton Oaks Plaza II

901 S. Mopac Expressway  
Austin, Texas 78746

---

### Will Douglas

+1 512 225 1728

[will.douglas@am.jll.com](mailto:will.douglas@am.jll.com)

### Spencer Holbert

+1 512 225 1731

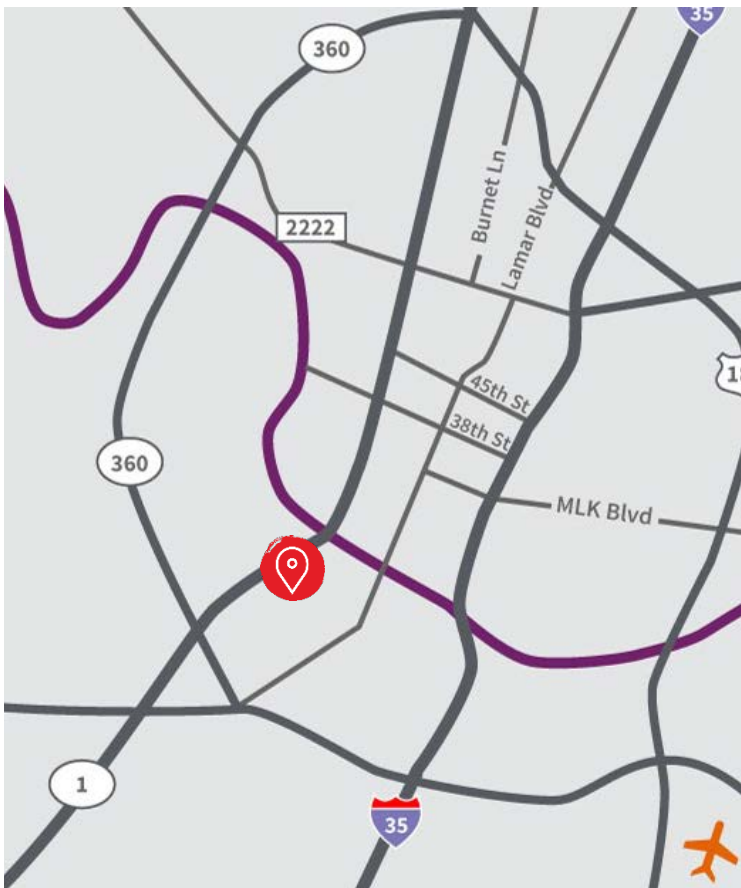
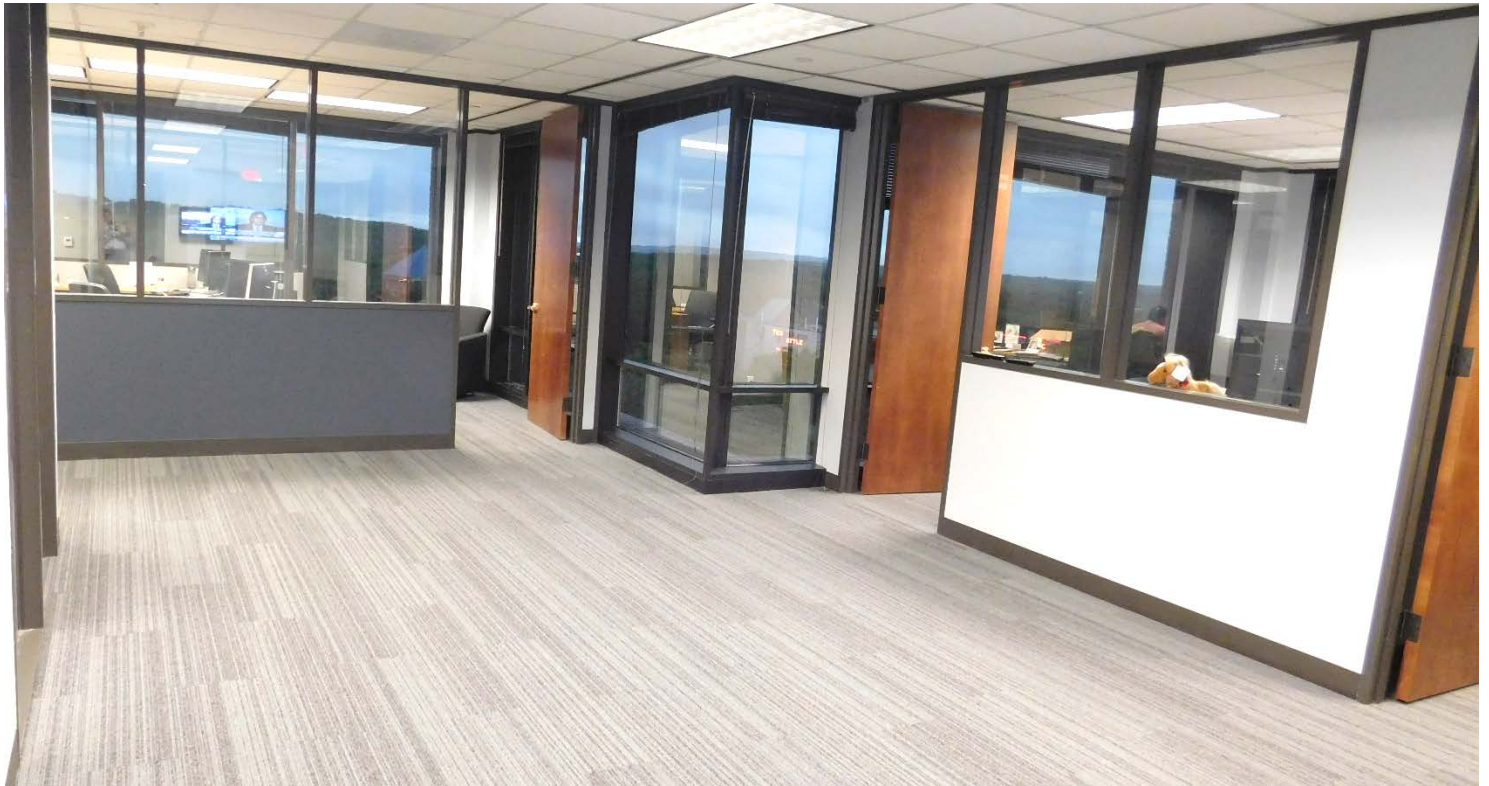
[spencer.holbert@am.jll.com](mailto:spencer.holbert@am.jll.com)

[www.jll.com/austin](http://www.jll.com/austin)

# Suite 420 | 2,254 SF

Barton Oaks Plaza II

# For Sublease



The information contained herein is obtained from sources believed to be reliable. However, Jones Lang LaSalle makes no guarantees, warranties or representations as to the completeness or accuracy thereof. The presentation of this property is submitted subject to errors, omissions, change of price or conditions, and is subject to prior sale, lease or withdrawal without notice



# Suite 420 | 2,254 SF

Barton Oaks Plaza II

# For Sublease



## Suite Highlights

- Available in October 2018
- Furniture Available
- New Buildout with Mix of Office and Open Space



## Barton Oaks Plaza II

901 S. Mopac Expressway  
Austin, Texas 78746

**Will Douglas**  
+1 512 225 1728  
[will.douglas@am.jll.com](mailto:will.douglas@am.jll.com)

**Spencer Holbert**  
+1 512 225 1731  
[spencer.holbert@am.jll.com](mailto:spencer.holbert@am.jll.com)

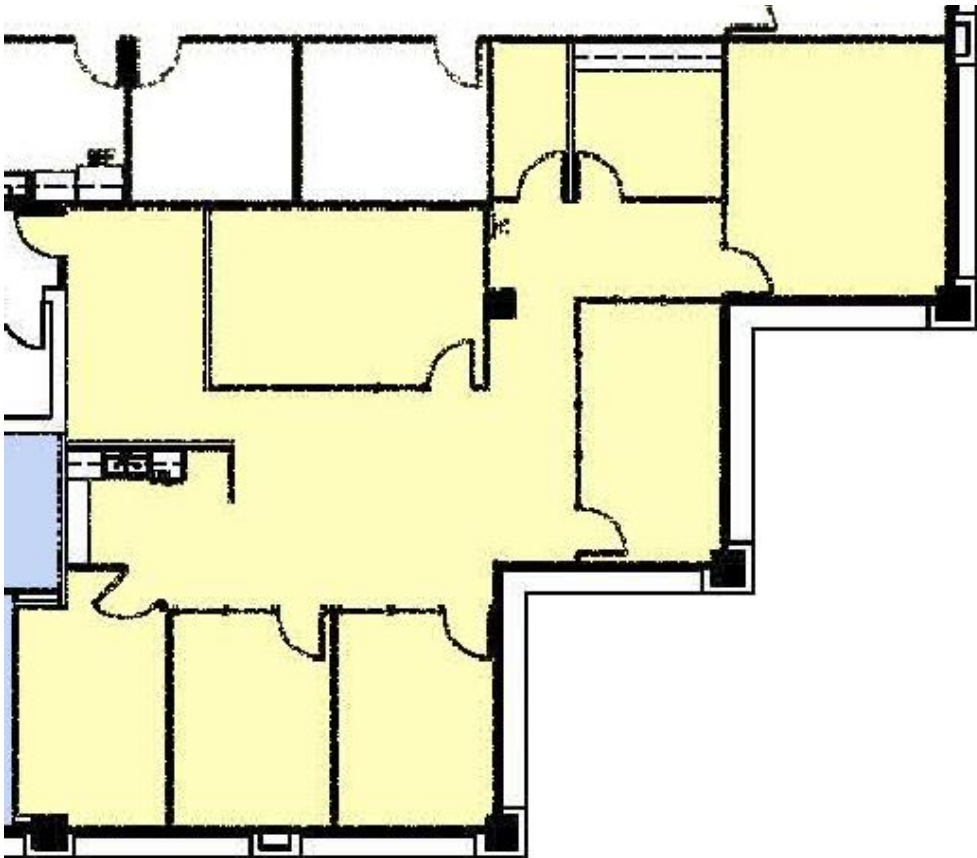
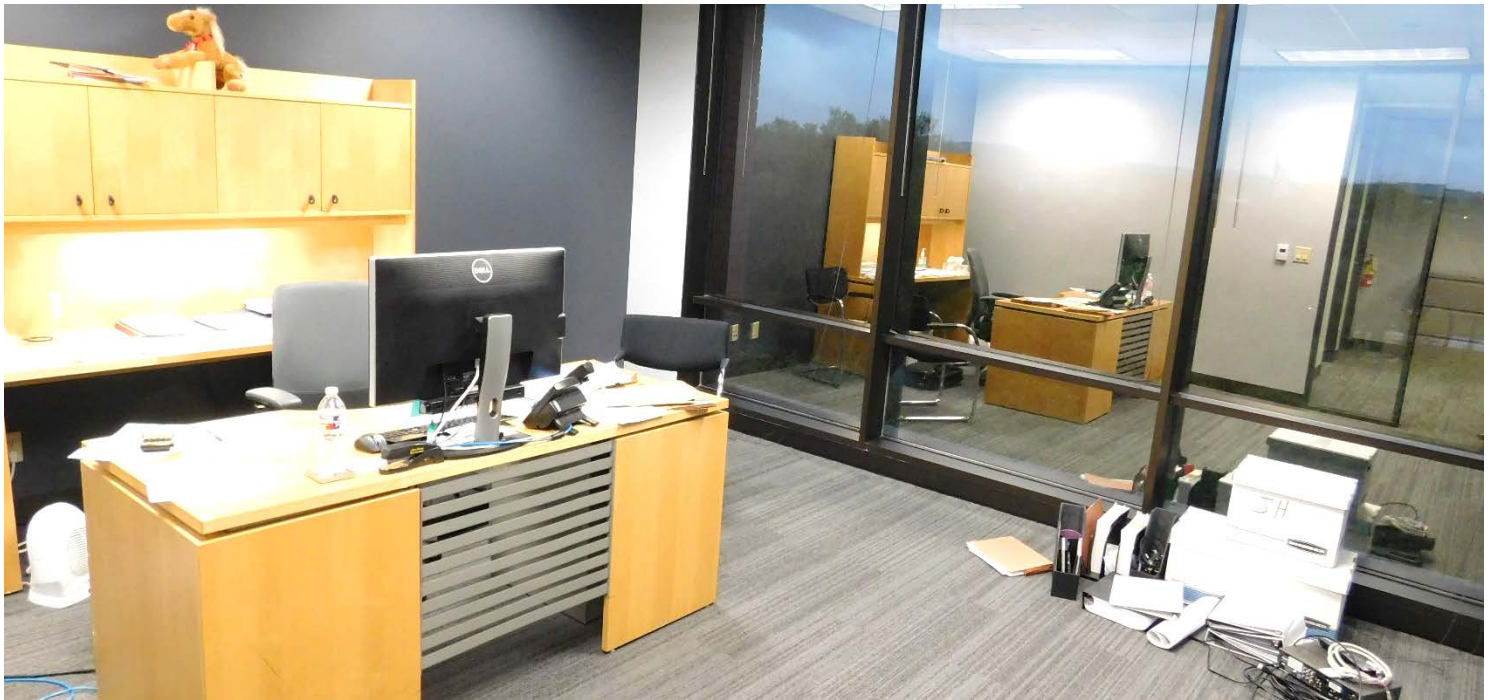
The information contained herein is obtained from sources believed to be reliable. However, Jones Lang LaSalle makes no guarantees, warranties or representations as to the completeness or accuracy thereof. The presentation of this property is submitted subject to errors, omissions, change of price or conditions, and is subject to prior sale, lease or withdrawal without notice



Suite 420 | 2,254 SF

Barton Oaks Plaza II

For Sublease



### Barton Oaks Plaza II

901 S. Mopac Expressway  
Austin, Texas 78746

**Will Douglas**  
+1 512 225 1728  
[will.douglas@am.jll.com](mailto:will.douglas@am.jll.com)

**Spencer Holbert**  
+1 512 225 1731  
[spencer.holbert@am.jll.com](mailto:spencer.holbert@am.jll.com)

The information contained herein is obtained from sources believed to be reliable. However, Jones Lang LaSalle makes no guarantees, warranties or representations as to the completeness or accuracy thereof. The presentation of this property is submitted subject to errors, omissions, change of price or conditions, and is subject to prior sale, lease or withdrawal without notice

