



# 870 Central Park Avenue

Scarsdale, NY

## Former Walgreens Available for Sublease

### Space

Ground Floor: 8,840 sf

### Possession

Immediate

### Frontage

138 ft

### Term

Through 10/31/2035

### Asking Rent

\$385,000 per annum gross

Former Walgreens store #12093

### Neighbors



JO-ANN'S  
fabric and craft stores



RED LOBSTER  
FRESH FISH - LIVE LOBSTER



### Demographics

Radius	'19 Pop	Total HH	Avg. HHI
1 Mile	12,659	5,210	\$224,220
3 Mile	110,120	41,110	\$198,694
5 Mile	316,456	121,967	\$165,753



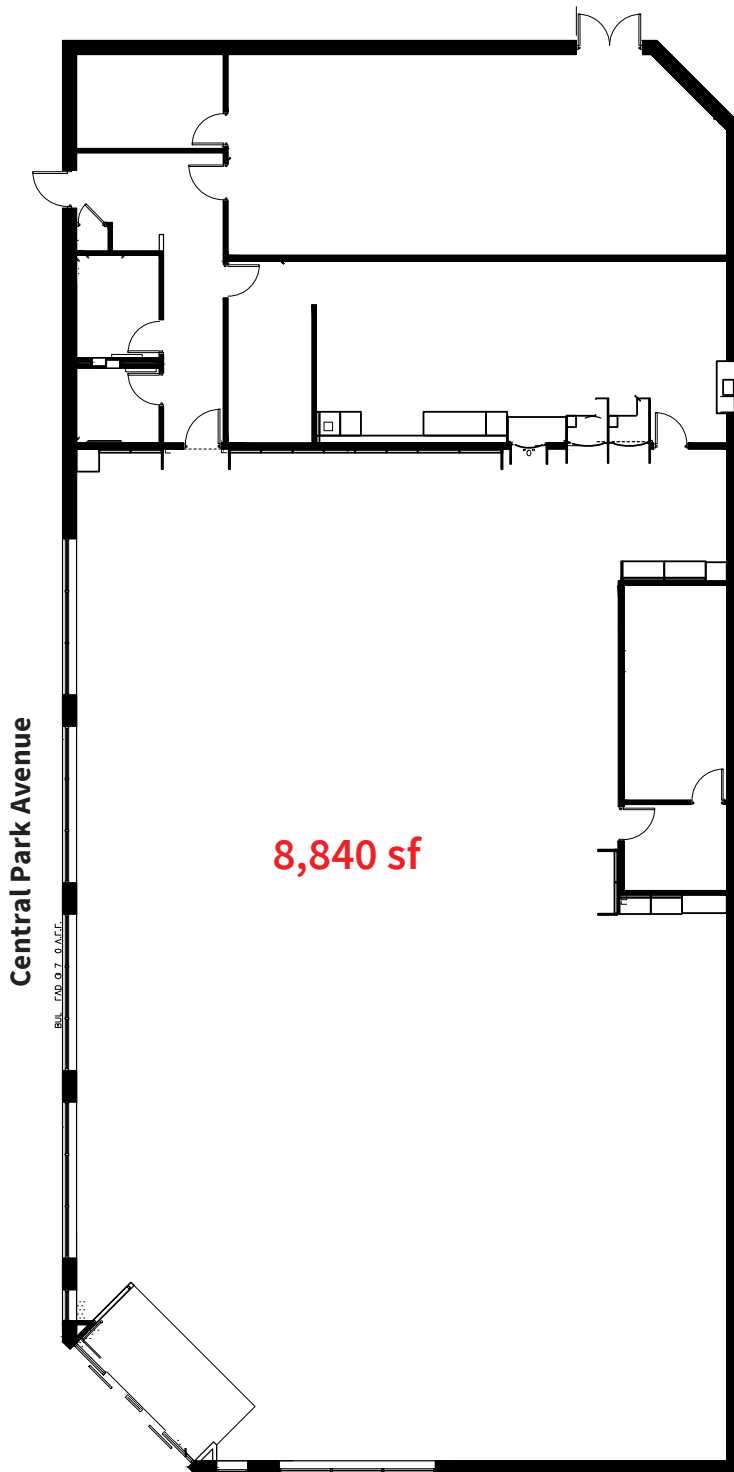
Michael Riley  
+1 212 812 5901  
Michael.Riley@am.jll.com

Patrick A. Smith  
+1 212 812 5888  
Patricka.Smith@am.jll.com

# 870 Central Park Avenue

Scarsdale, NY

## Ground Floor



Central Park Avenue

8,840 sf



Jones Lang LaSalle Brokerage, Inc. | 330 Madison Avenue New York, NY 10017

### DISCLAIMER

Although information has been obtained from sources deemed reliable, neither Owner nor JLL makes any guarantees, warranties or representations, express or implied, as to the completeness or accuracy as to the information contained herein. Any projections, opinions, assumptions or estimates used are for example only. There may be differences between projected and actual results, and those differences may be material. The Property may be withdrawn without notice. Neither Owner nor JLL accepts any liability for any loss or damage suffered by any party resulting from reliance on this information. If the recipient of this information has signed a confidentiality agreement regarding this matter, this information is subject to the terms of that agreement.

©2020 Jones Lang LaSalle IP, Inc. All rights reserved.