



Ideal options in Bethesda

7979 Old Georgetown Road
Bethesda, MD



Property highlights

- 6,597 sf available on 2nd floor in shell condition. Landlord will turnkey
- 2,293 sf high end spec suite on the 8th floor
- Prominent visible Bethesda landmark on Old Georgetown Road
- Completely renovated
- Short, easy walk to the Bethesda Metro Station
- Access to convenient Bethesda shuttle service.
- Surrounded by amenities – restaurants, hotels, retail services
- Easily accessible to I-495, Wisconsin Ave., & East-West Highway
- Parking on site

Leasing contacts

Andrew Masters

+1 301 287 3262
andrew.masters@am.jll.com

Amanda Davis

+1 301 287 9970
amanda.davis@am.jll.com

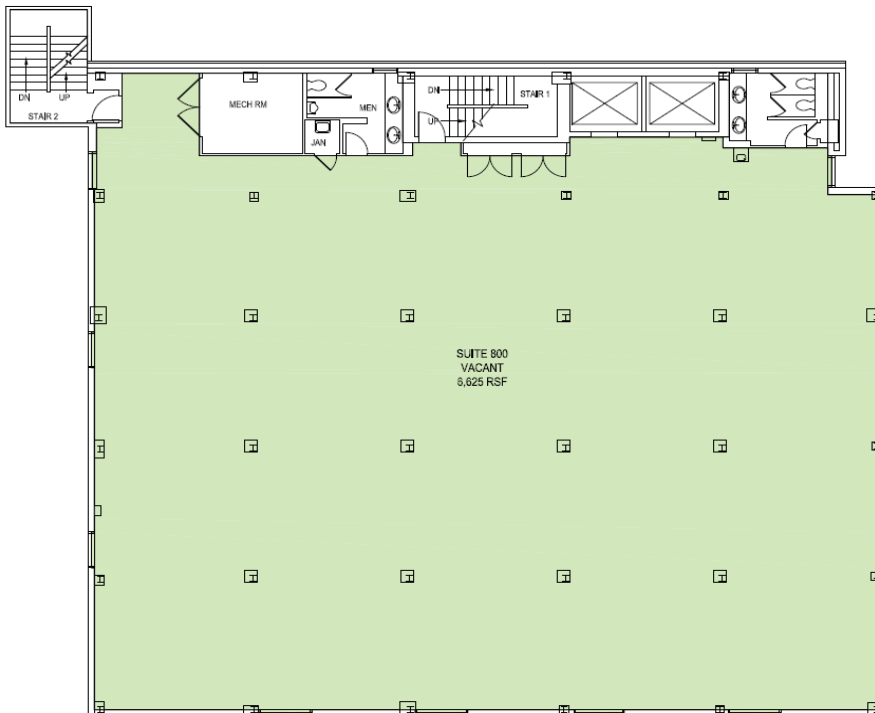
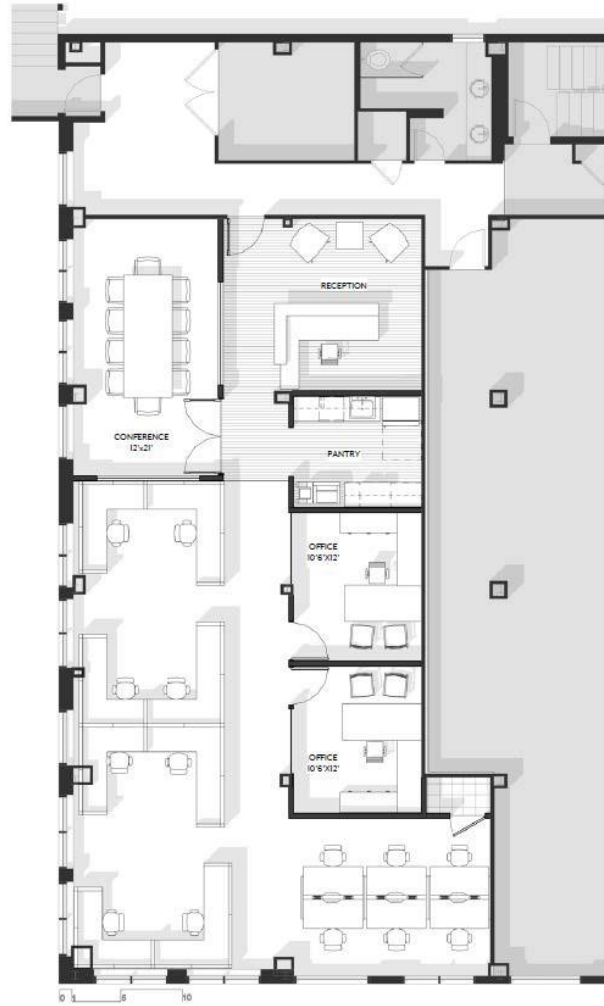
Danny Sheridan

+1 301 287 9922
danny.sheridan@am.jll.com

Shannon McFadzean

+1 301 287 3264
shannon.mcfadzean@am.jll.com

8th floor - 2,293 sf
spec suite



2nd floor - 6,597 sf
shell condition