



3rd floor 11,109 s.f.
2nd floor 4,942 s.f.



2,500 – 16,051 S.F. OF TROPHY SPACE AVAILABLE NOW

7550 WISCONSIN AVENUE

Bethesda, MD • 4,942 s.f. suite available on the 2nd floor
• 11,109 s.f. suite available on the 3rd floor

- Full floor opportunity on the 3rd floor
- Prime corner of building on the 2nd floor
- Glass entrance with direct elevator exposure
- 2nd floor suite is in shell condition, 3rd floor is fully built out with high end finishes
- Roof Top terrace
- Fitness Center
- Three high speed elevators
- One block to the Bethesda Metro station

Leasing by:

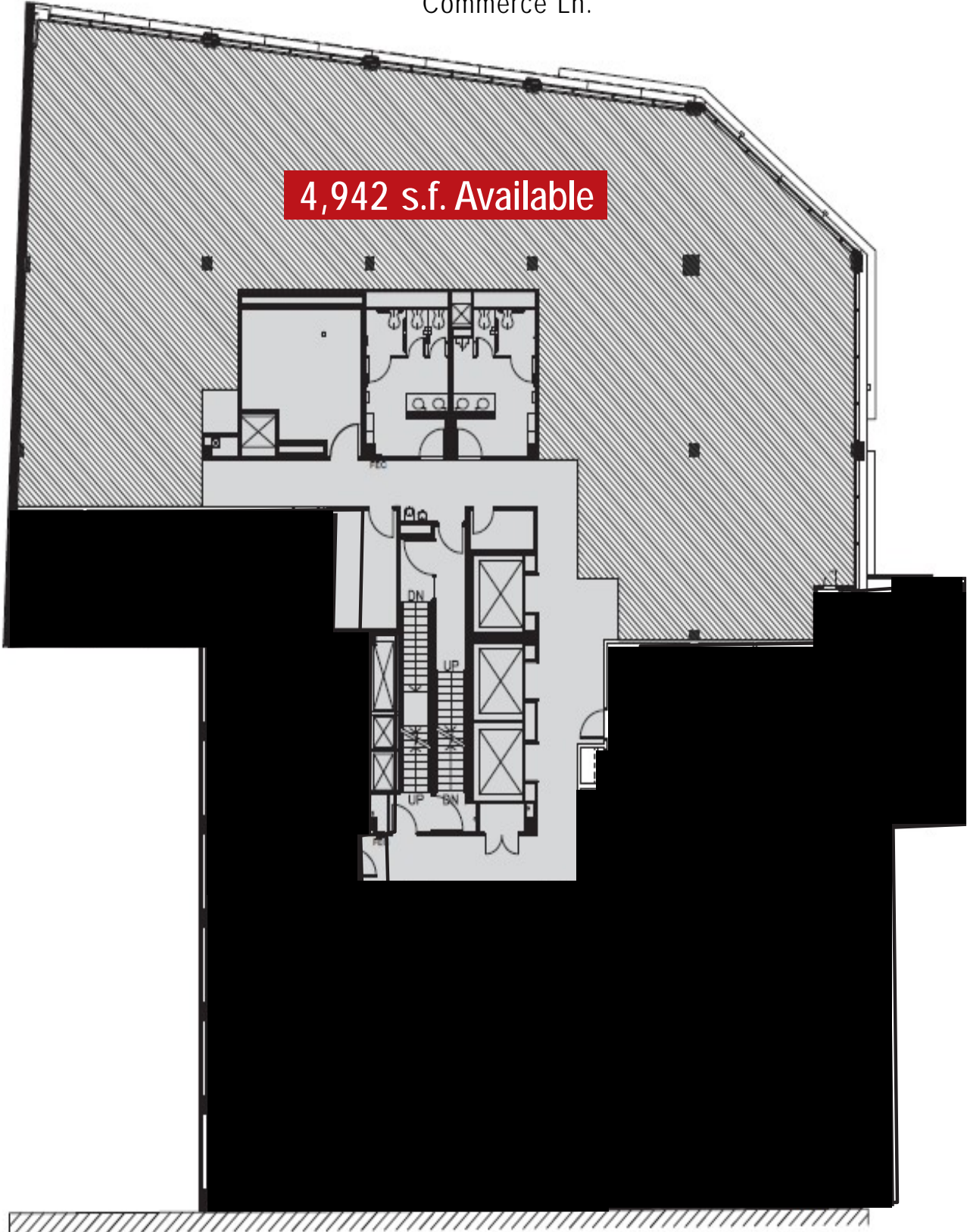


2ND FLOOR



Commerce Ln.

4,942 s.f. Available



Wisconsin Ave.



7550 WISCONSIN AVENUE BETHESDA, MD

Leasing by:

Bernie McCarthy
Managing Director
+1 301 287 3263
Bernie.McCarthy@am.jll.com

Amanda Davis
Senior Vice President
+1 301 287 9970
Amanda.Davis@am.jll.com

Danny Sheridan
Senior Vice President
+1 301 287 9922
Amanda.Davis@am.jll.com

Andrew Masters
Managing Director
+1 301 287 3262
Andrew.Masters@am.jll.com

