

For Sublease

69 Yonge Street



PROPERTY DETAILS

SUITE SIZE:

Suite 1307 - 598 sq. ft.

TERM:

August 30th, 2024

AVAILABLE:

Immediate

NET RENT:

Negotiable

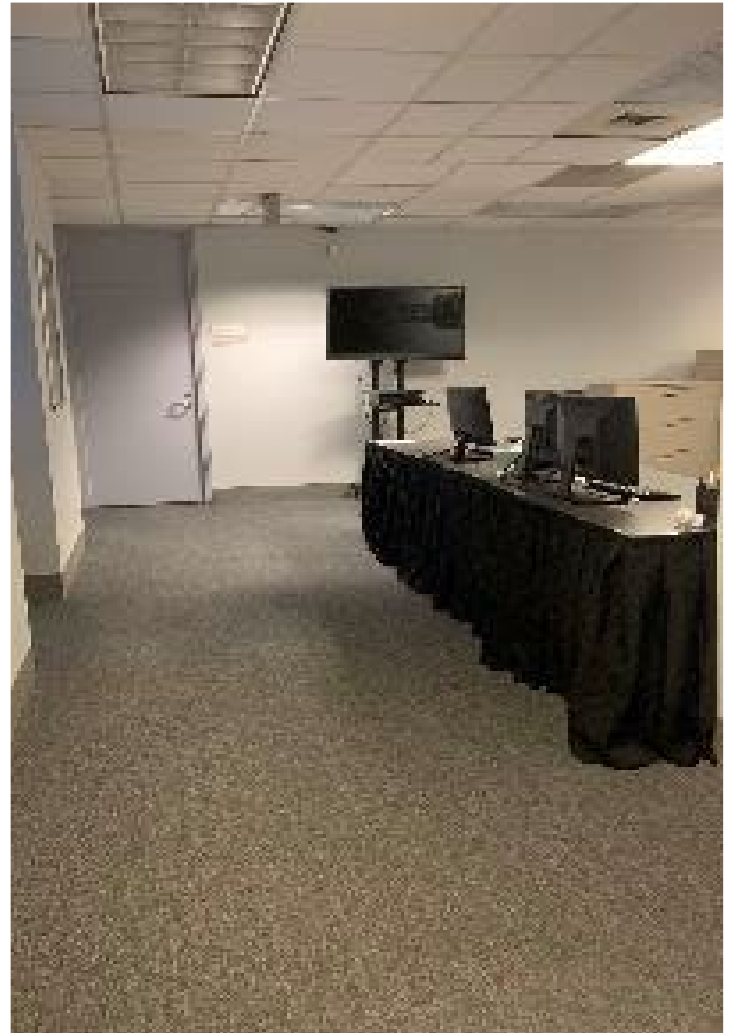
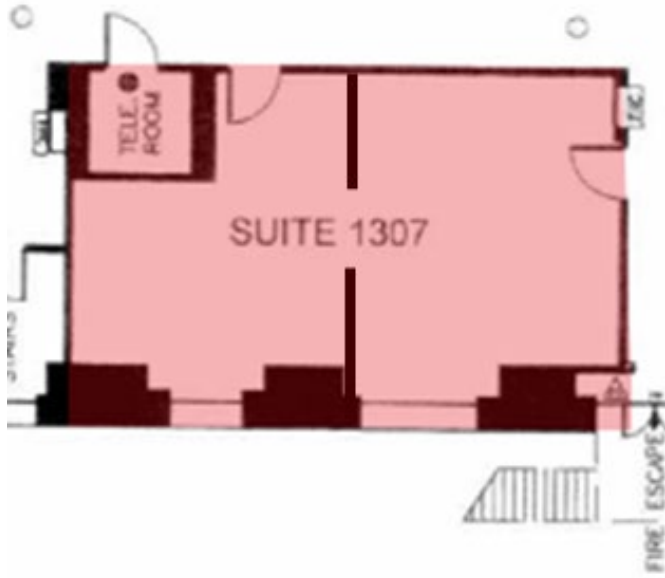
ADDITIONAL RENT:

\$26.04 (2021 estimate)

SPACE HIGHLIGHTS

- Built out improved space
- Administration, lab/learning space
- Steps from King Street Subway Station
- Furniture could be made available
- Steps from PATH and various amenities

For Sublease



For more information, contact:

Richard Haig, LEED AP
Senior Vice-President
+1 (416) 304-6014
Richard.Haig@am.jll.com