



# Sovereign Centre

Sublease Office Space Available | 5,191 s.f.

6700 Macleod Trail SW, Calgary, AB

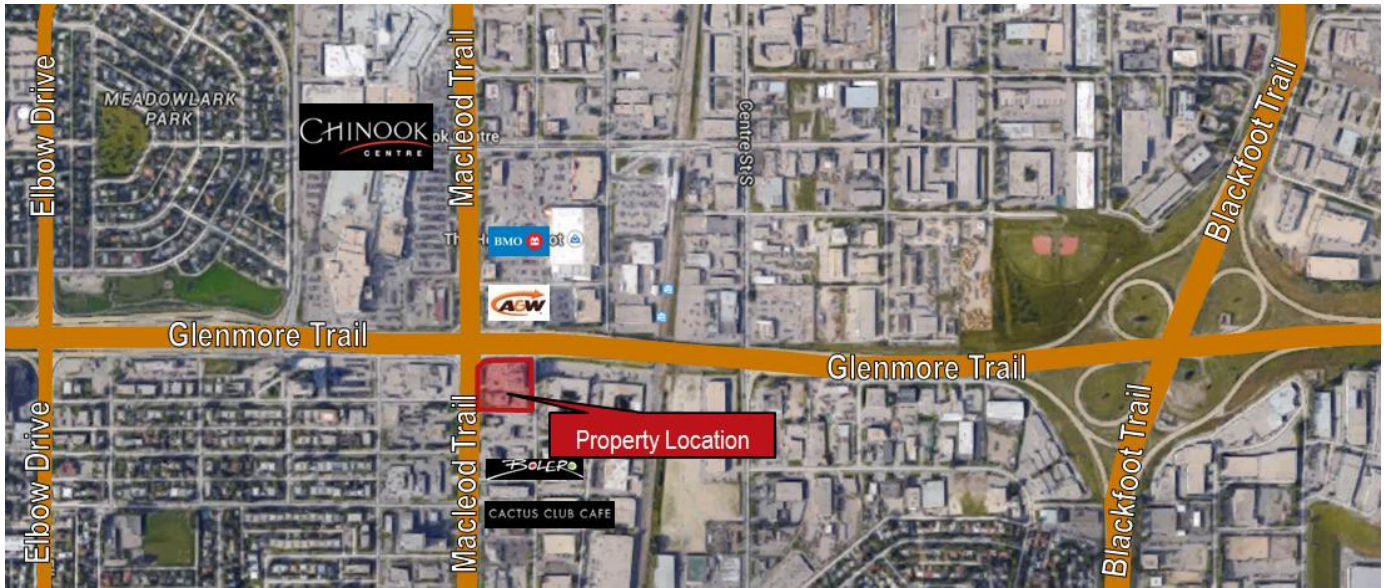
## PROPERTY DETAILS

<b>Available Space:</b>	5,191 s.f.
<b>Sublease Rate:</b>	Market
<b>Op. Costs:</b>	\$21.14 p.s.f. (Est. 2021)
<b>Parking Ratio:</b>	1:369 s.f.
<b>Parking Costs:</b>	Surface - \$110 per stall, per month Underground - \$150 per stall, per month
<b>Sublease Expiry:</b>	August 30 <sup>th</sup> 2023 (shorter terms are possible)
<b>Tenant Allowance:</b>	Negotiable

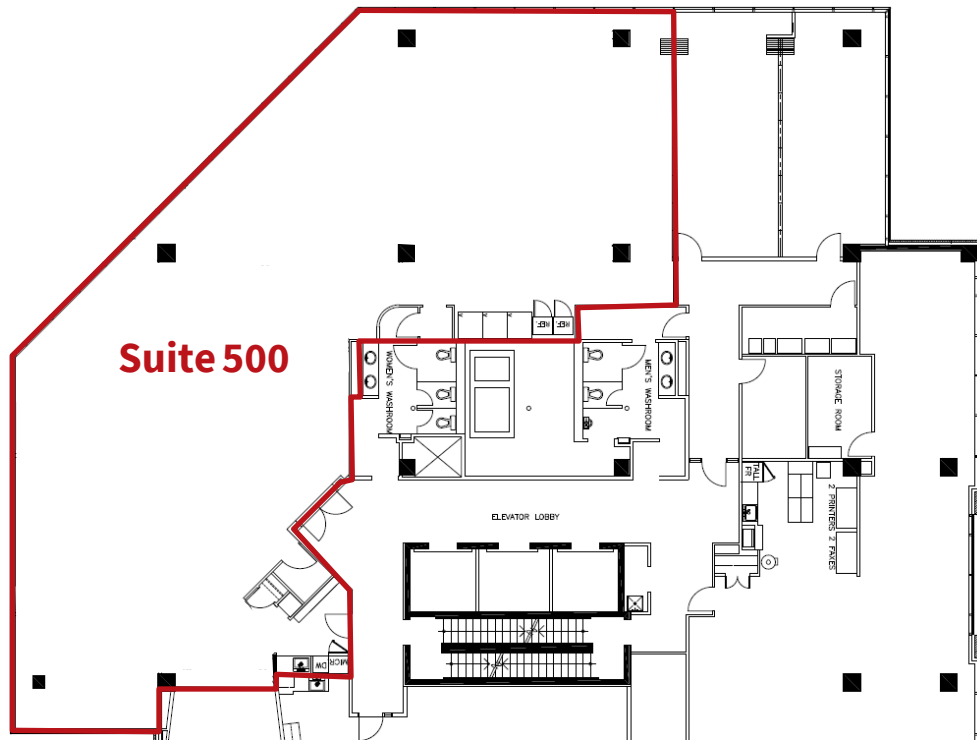
## PROPERTY HIGHLIGHTS

- Centrally located, minutes from downtown, Chinook LRT Station, and Chinook Centre
- Magnificent north and east views
- Direct access to Macleod Tr. and Glenmore Tr.
- Numerous amenities in the area including restaurants such as Cactus Club, Joey's & Tony Roma's
- Sublease opportunity in a highly coveted building

## AREA MAP



## FLOOR PLAN



**For more information, please contact:**

**David Lees**  
Executive Vice President  
Office +1 403 4565581  
Cell +1 403 869 5025  
[david.lees@am.jll.com](mailto:david.lees@am.jll.com)

**Adam Ramsay**  
Executive Vice President  
Office +1 403 4562204  
Cell +1 403 660 6390  
[adam.ramsay@am.jll.com](mailto:adam.ramsay@am.jll.com)

**Jones Lang LaSalle**  
**Real Estate Services, Inc.**  
3900, 855 - 2 Street SW  
Calgary, AB T2P 4J8 | [jll.ca](http://jll.ca)

