



For Sublease
4011 14th Avenue, Markham, ON
Suite 100 & 200

PROPERTY DETAILS

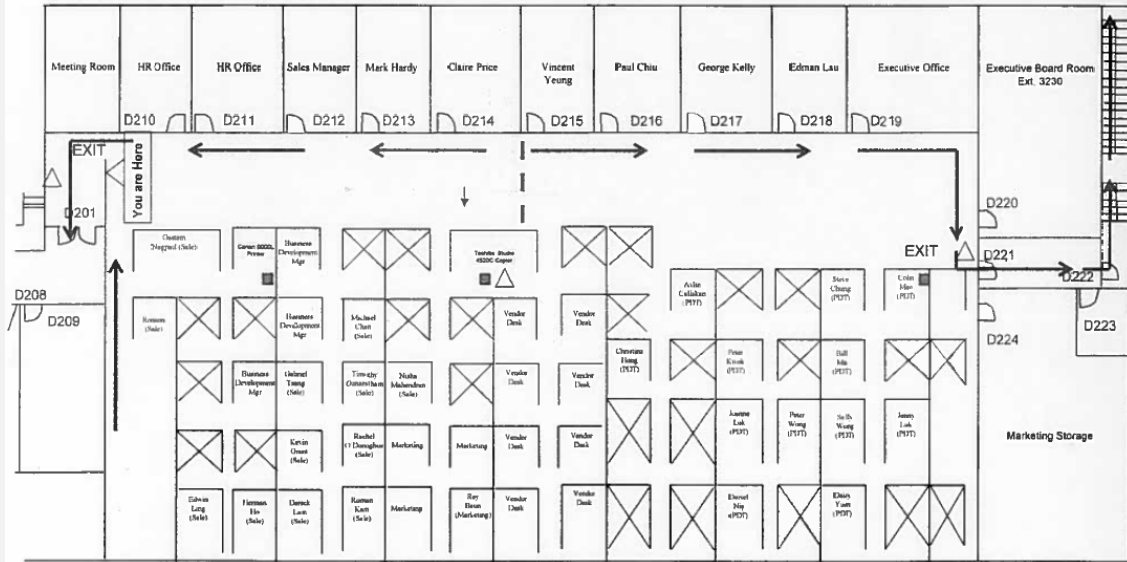
Available Space: 40,000 s.f.
Availability: 30 days' notice
Sublease Rate: \$11.00 s.f. Gross Rent
Expiry: January 31, 2019
Parking: Free Surface

PROPERTY HIGHLIGHTS

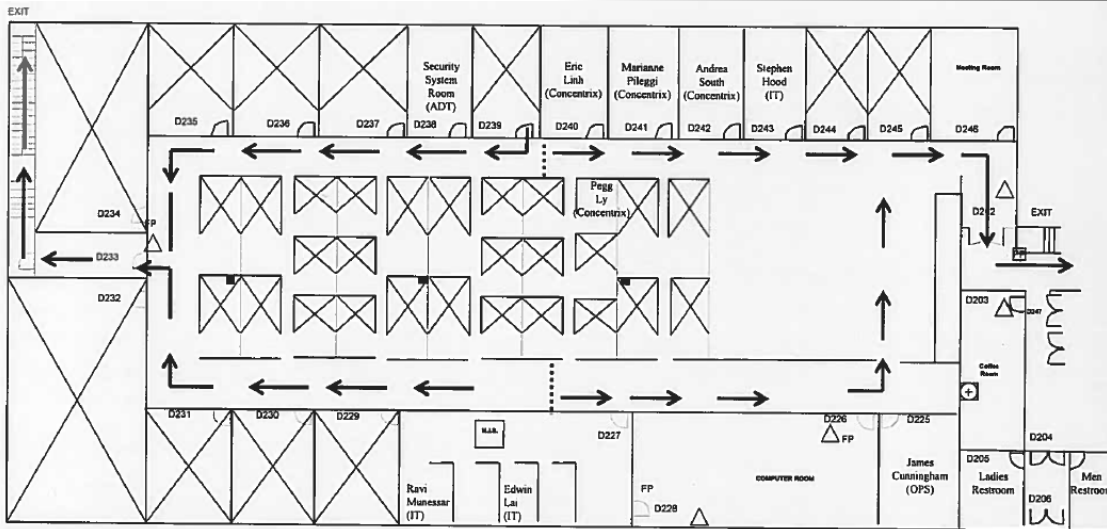
- Low Gross Rate
- Furniture can be made available
- Excellent access
- Transit accessible
- Space divisible to 20,000 s.f.

Floor Plans

- Up to 40,000 sf available
- Divisible to 20,000 sf
- Each wing is two levels of 10,000 sf
- Perimeter offices with open area for workstations
- Furniture available
- Ideal for call centre



East Wing Seating Plan

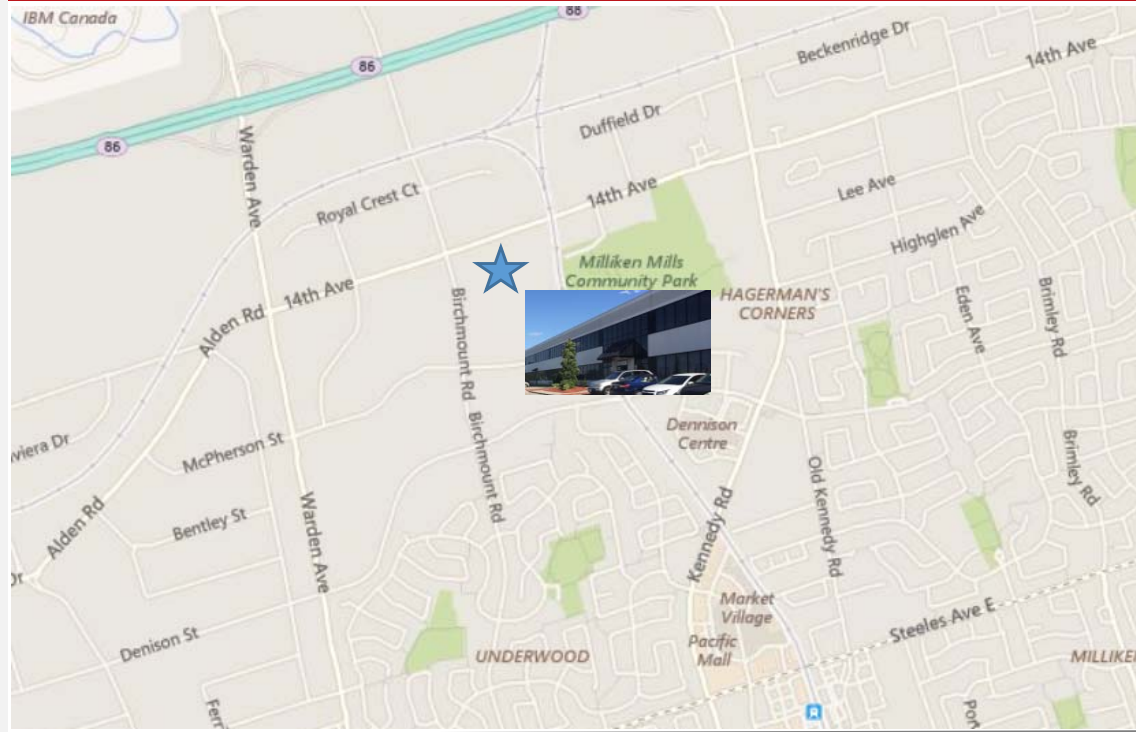


West Wing Seating Plan

Suite Photographs



- Transit accessible
- Free surface parking
- In Good Company – minutes away from TD, IBM, Aviva Canada
- Easy Access to Highway 407, 7 and 404
- Educated neighbourhood workforce



- Minutes away from the new Downtown Markham
- Amenities include: major banks, retail shops, fitness centre, restaurants and lounges

For more information, please contact:

Sandy Craik*
 Vice President
 Office +1 905 755 4650
 Cell +1 905 334 5825
sandy.craik@am.jll.com

Paul Finlayson*
 Senior Vice President
 Office +1 905 755-4651
 Cell +1 416 627-8772
paul.finlayson@am.jll.com

Jonathon Gray*
 Senior Associate
 Office +1 647 728-0461
 Cell +1 647 880-2528
jonathon.gray@am.jll.com