

# 322 Eighth Avenue

Northeast corner of Eighth Avenue & 26th Street

## Former Duane Reade Available for Sublease

### Space

Ground Floor: 4,790 sf  
 Lower Level: 2,215 sf  
 Total: 7,005 sf

### Frontage

96 feet

### Possession

Immediate

### Term

Through 1/1/2026

### Asking Rent

\$360,000 PA gross

### Neighbors



### Demographics

Radius	'19 Pop	Total HH	Avg. HHI
.25 Mile	18,000	9,897	\$140,417
.5 Mile	55,802	31,695	\$176,774
.75 Mile	93,893	54,401	\$181,170

Former Duane Reade store #14186



Michael Riley

+1 212 812 5901

Michael.Riley@am.jll.com

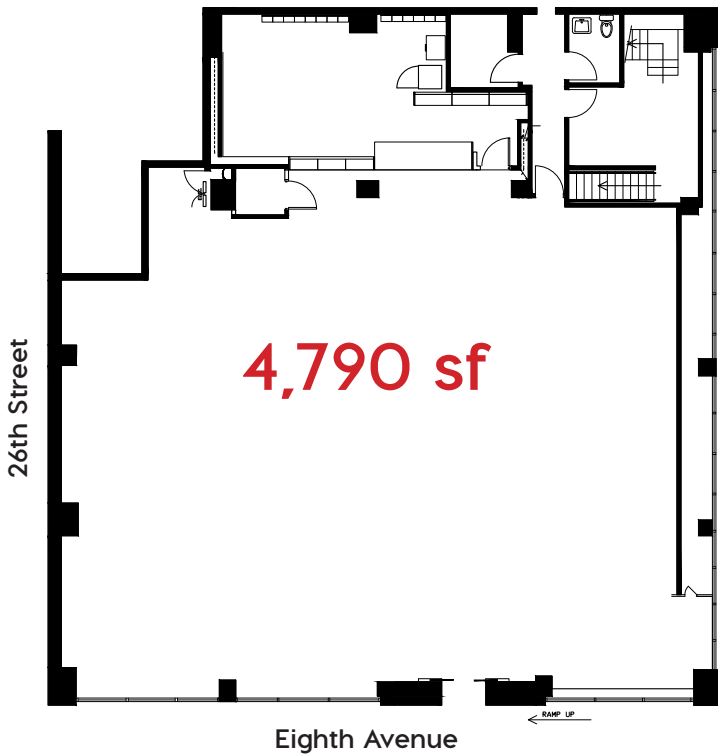
Patrick A. Smith

+1 212 812 5888

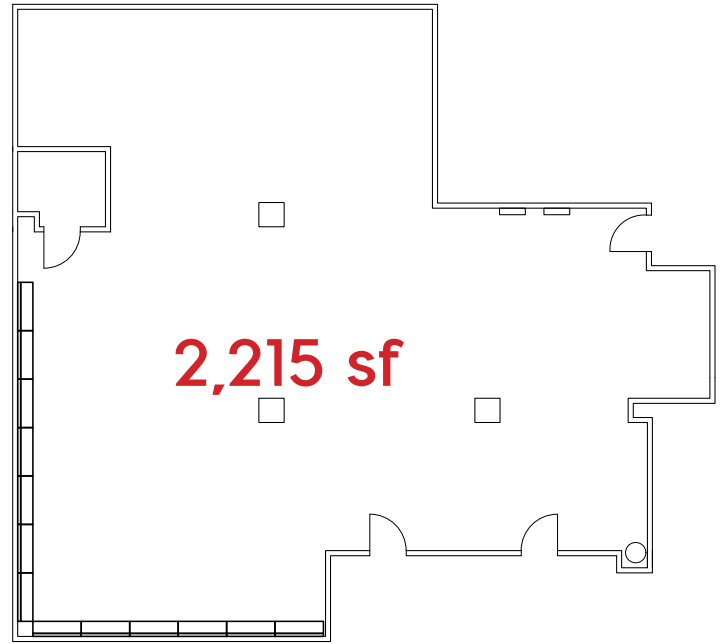
Patricka.Smith@am.jll.com

# 322 Eighth Avenue

## Ground Floor



## Lower Level



Jones Lang LaSalle Brokerage, Inc. | 330 Madison Avenue New York, NY 10017

### DISCLAIMER

Although information has been obtained from sources deemed reliable, neither Owner nor JLL makes any guarantees, warranties or representations, express or implied, as to the completeness or accuracy as to the information contained herein. Any projections, opinions, assumptions or estimates used are for example only. There may be differences between projected and actual results, and those differences may be material. The Property may be withdrawn without notice. Neither Owner nor JLL accepts any liability for any loss or damage suffered by any party resulting from reliance on this information. If the recipient of this information has signed a confidentiality agreement regarding this matter, this information is subject to the terms of that agreement. ©2019 Jones Lang LaSalle IP, Inc. All rights reserved.