



310 East Second Street

Between Avenue C & Avenue D

Former Duane Reade Available for Sublease

Space

Ground Floor: 9,195 sf

Frontage

175 feet wraparound

Possession

Immediate

Term

Through 2/1/2035

Asking Rent

\$800,000 p.a. gross

Former Duane Reade store #14501

Neighbors



Demographics

Radius	'19 Pop	Total HH	Avg. HHI
.25 Mile	22,134	9,330	\$73,714
.5 Mile	68,684	31,087	\$83,643
.75 Mile	137,080	62,863	\$92,557



Michael Riley
+1 212 812 5901

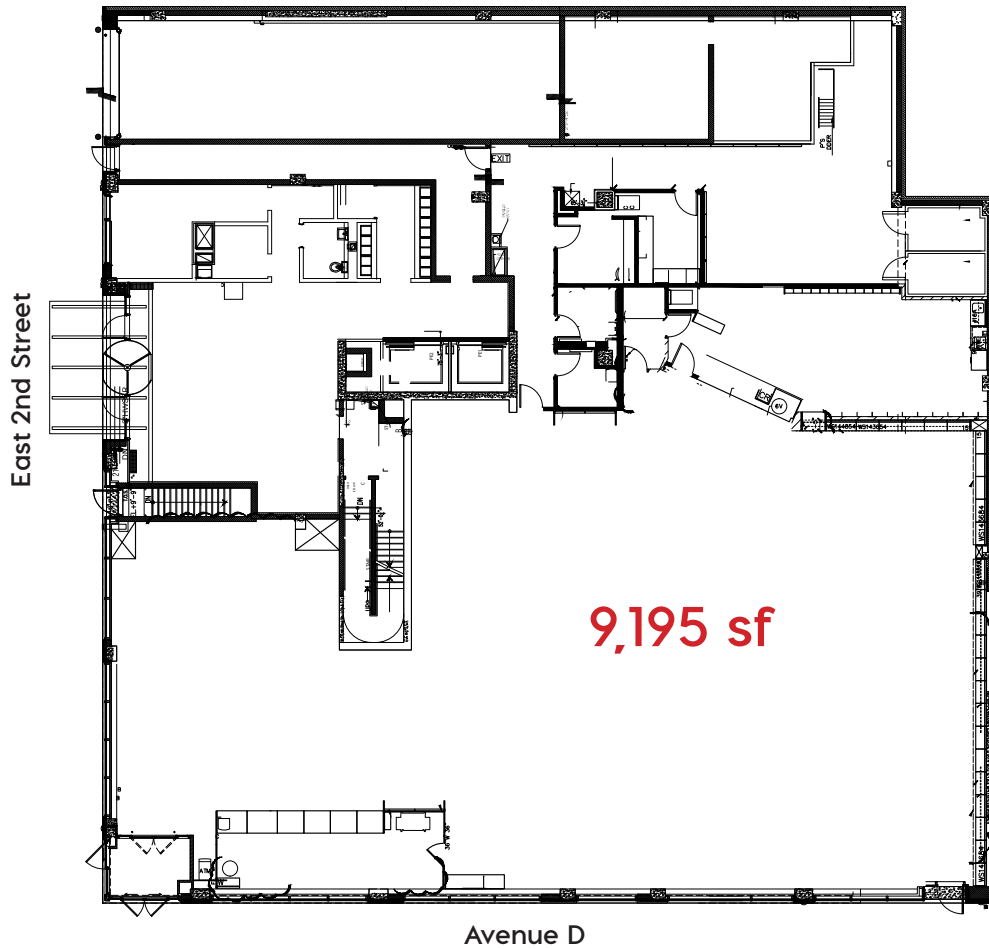
Michael.Riley@am.jll.com

Patrick A. Smith
+1 212 812 5888

Patricka.Smith@am.jll.com

310 East Second Street

Ground Floor



Jones Lang LaSalle Brokerage, Inc. | 330 Madison Avenue New York, NY 10017

DISCLAIMER

Although information has been obtained from sources deemed reliable, neither Owner nor JLL makes any guarantees, warranties or representations, express or implied, as to the completeness or accuracy as to the information contained herein. Any projections, opinions, assumptions or estimates used are for example only. There may be differences between projected and actual results, and those differences may be material. The Property may be withdrawn without notice. Neither Owner nor JLL accepts any liability for any loss or damage suffered by any party resulting from reliance on this information. If the recipient of this information has signed a confidentiality agreement regarding this matter, this information is subject to the terms of that agreement. ©2019 Jones Lang LaSalle IP, Inc. All rights reserved.

