



# For Lease

## National Signs, Inc.

2611 El Camino St.  
Houston, TX 77054

---

### Chris Wadley

+1 713 888 4094

[chris.wadley@am.jll.com](mailto:chris.wadley@am.jll.com)

### Mallory Douthit

+1 713 425 5909

[mallory.douthit@am.jll.com](mailto:mallory.douthit@am.jll.com)

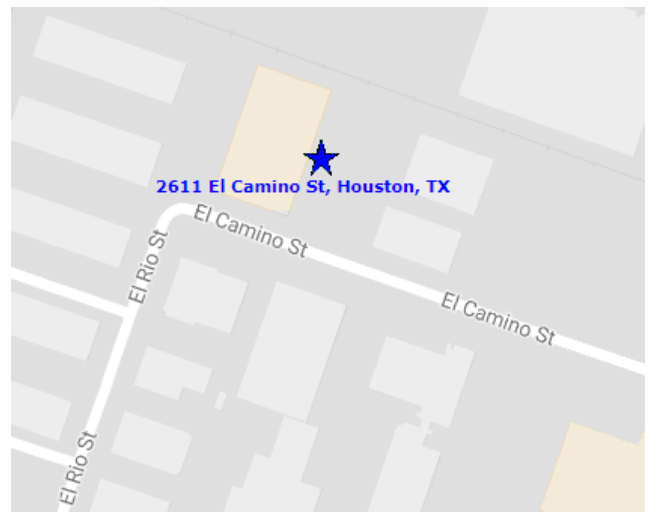
---

## Site features:

<b>Premises:</b>	53,400 r.s.f.
<b>Rental rate:</b>	\$25.00 NNN
<b>Location:</b>	Immediately adjacent to M.D. Anderson south research campus

## Highlights:

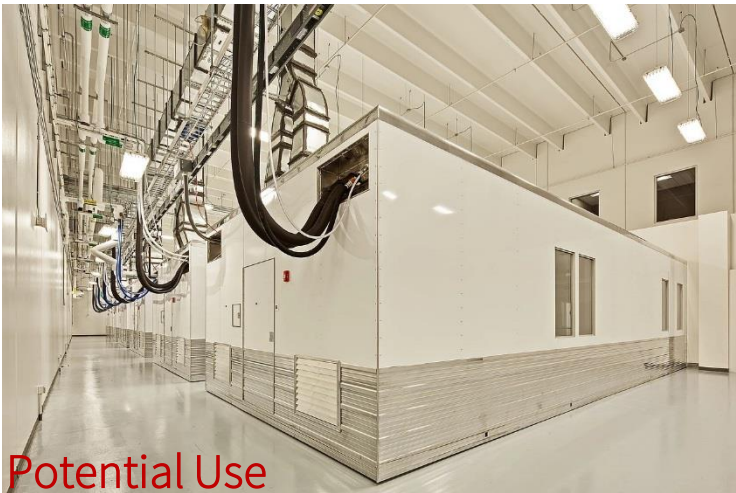
- Opportunity to locate clean room, modular lab, or GMP manufacturing in immediate TMC proximity.
- Cost-effective option adjacent to M.D. Anderson research campus and the pending TMC3.
- Signage opportunity for life science company branding
- Low-cost alternative to existing lab re-purpose, instead obtain (thru modular lab lease or purchase).
- Modular lab example: <https://www.gconbio.com/>



# For Lease

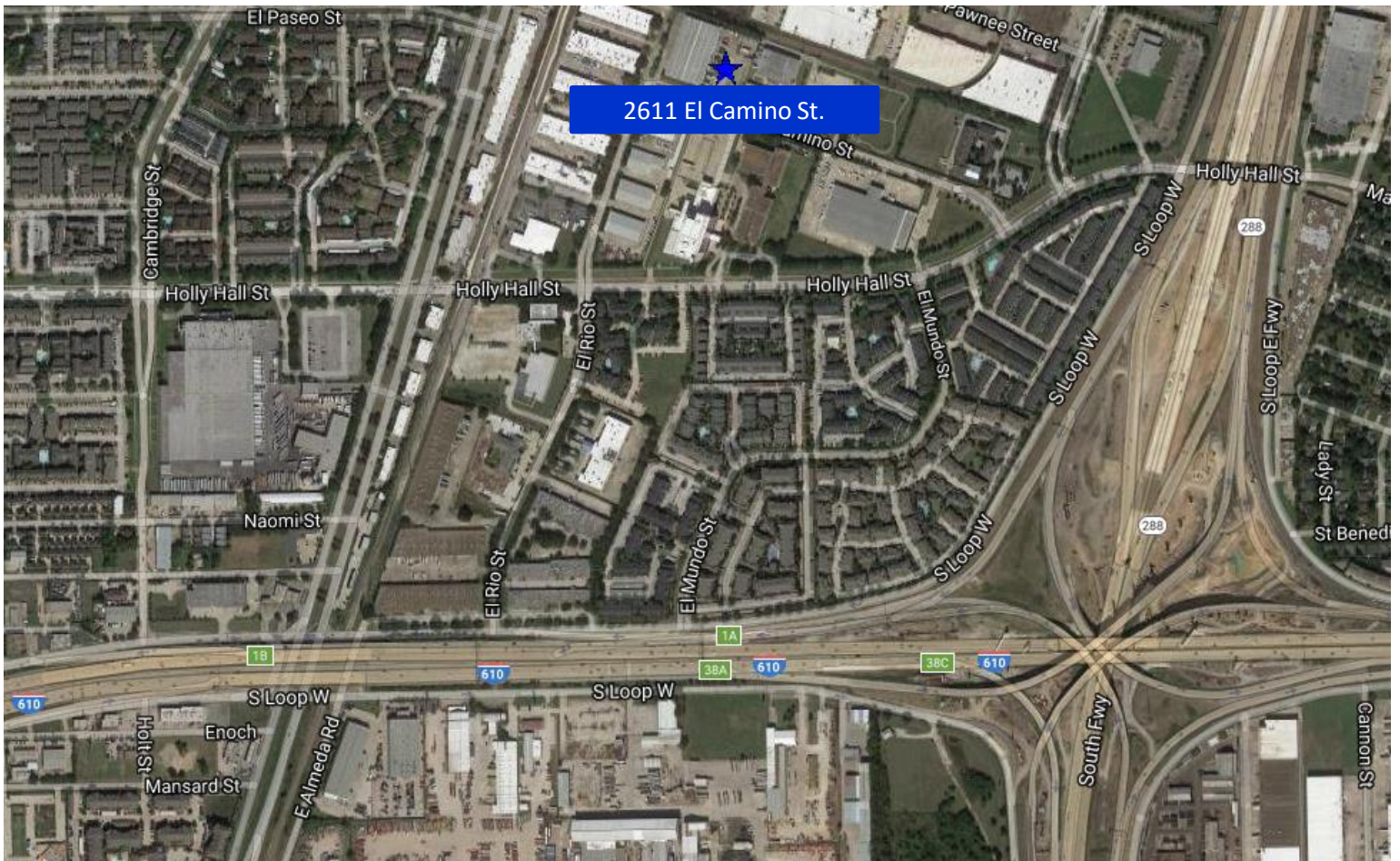
2611 El Camino St. | Houston Texas

## Interior Photos



# For Lease

2611 El Camino St. | Houston Texas



The information contained here is obtained from sources believed to be reliable; however, JLL makes no guarantees, warranties or representations as to the completeness or accuracy thereof. The presentation of this property is submitted subject to errors, omissions, change of price or conditions and is subject to prior sale, lease or withdrawal without notice.

