

For Sublease

2360 Cornwall Road
Plug 'N' Play Space



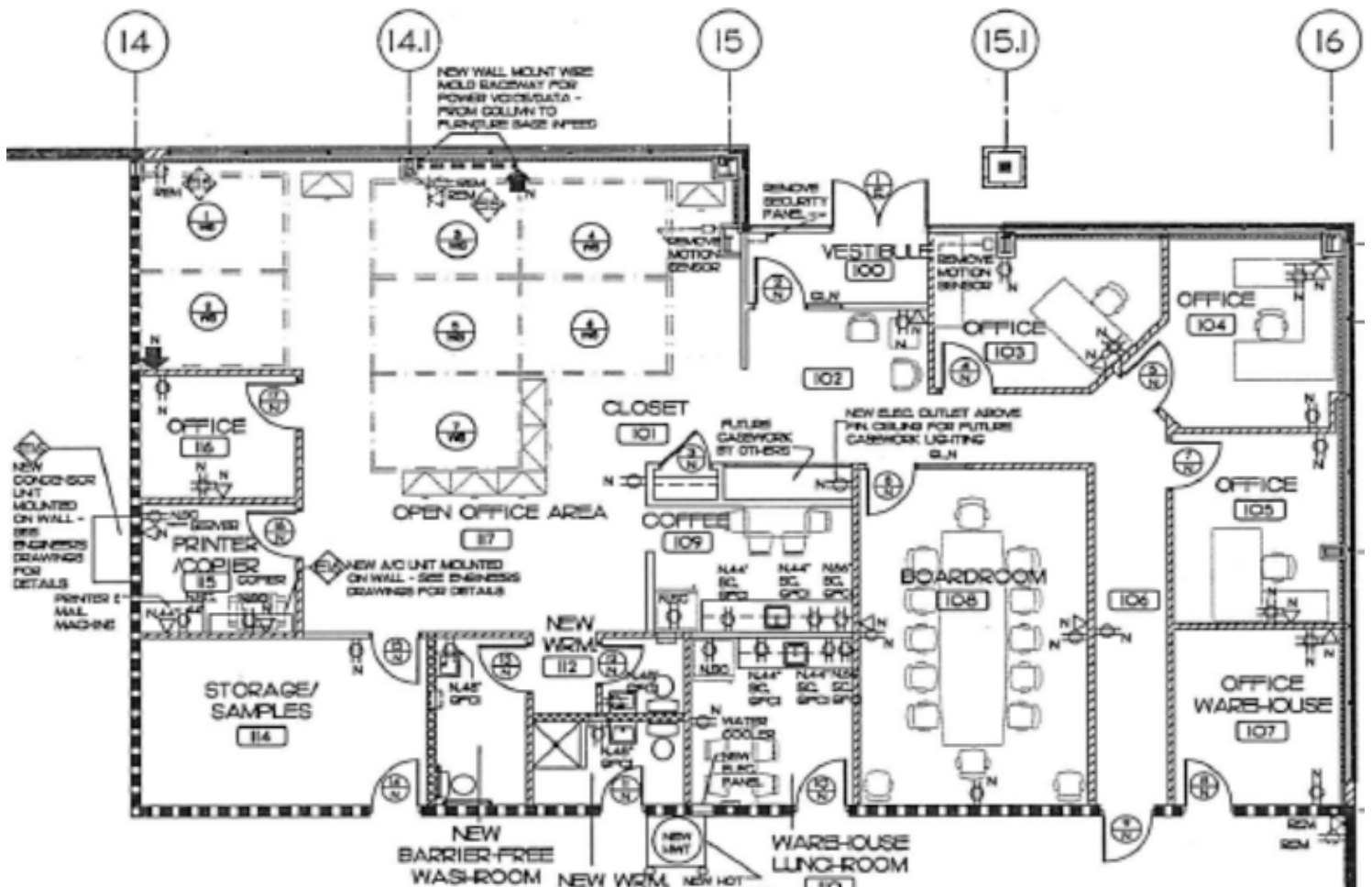
PROPERTY DETAILS

- **Premises:** Unit D1
- **Size:** 3,000 SF
- **Gross Rent:** \$15.00 PSF
- **Availability:** 60 days
- **Term Expiry:** September 29, 2024

PROPERTY HIGHLIGHTS

- Excellent cost-effective plug 'n' play sublease opportunity
- Numerous restaurants and amenities within 5 minute drive of the office
- Open concept office environment allows for layout flexibility to accommodate most users
- Furniture can be made available

Floor Plan



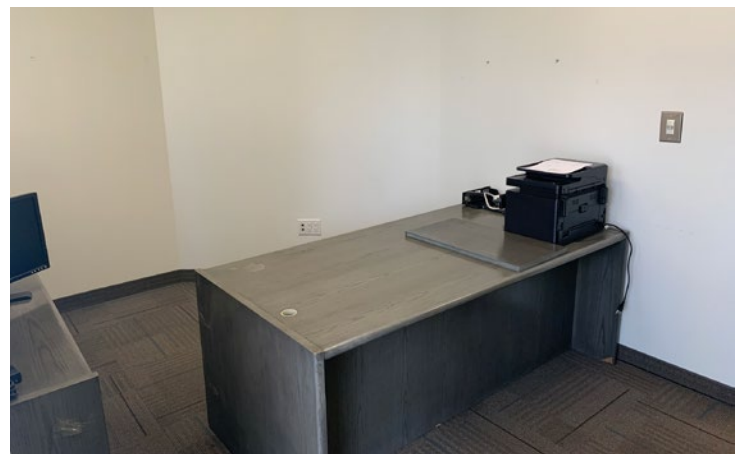
For more information, contact:

Michael Navo**
Senior Vice President
+1 905 755 4641
michael.navo@am.jll.com

Nicholas Stryland**
Executive Vice President
+1 416 577 6776
nicholas.stryland@am.jll.com

Nicole Jennings*
Associate
+1 905 766 4170
nicole.jennings@am.jll.com

The Space



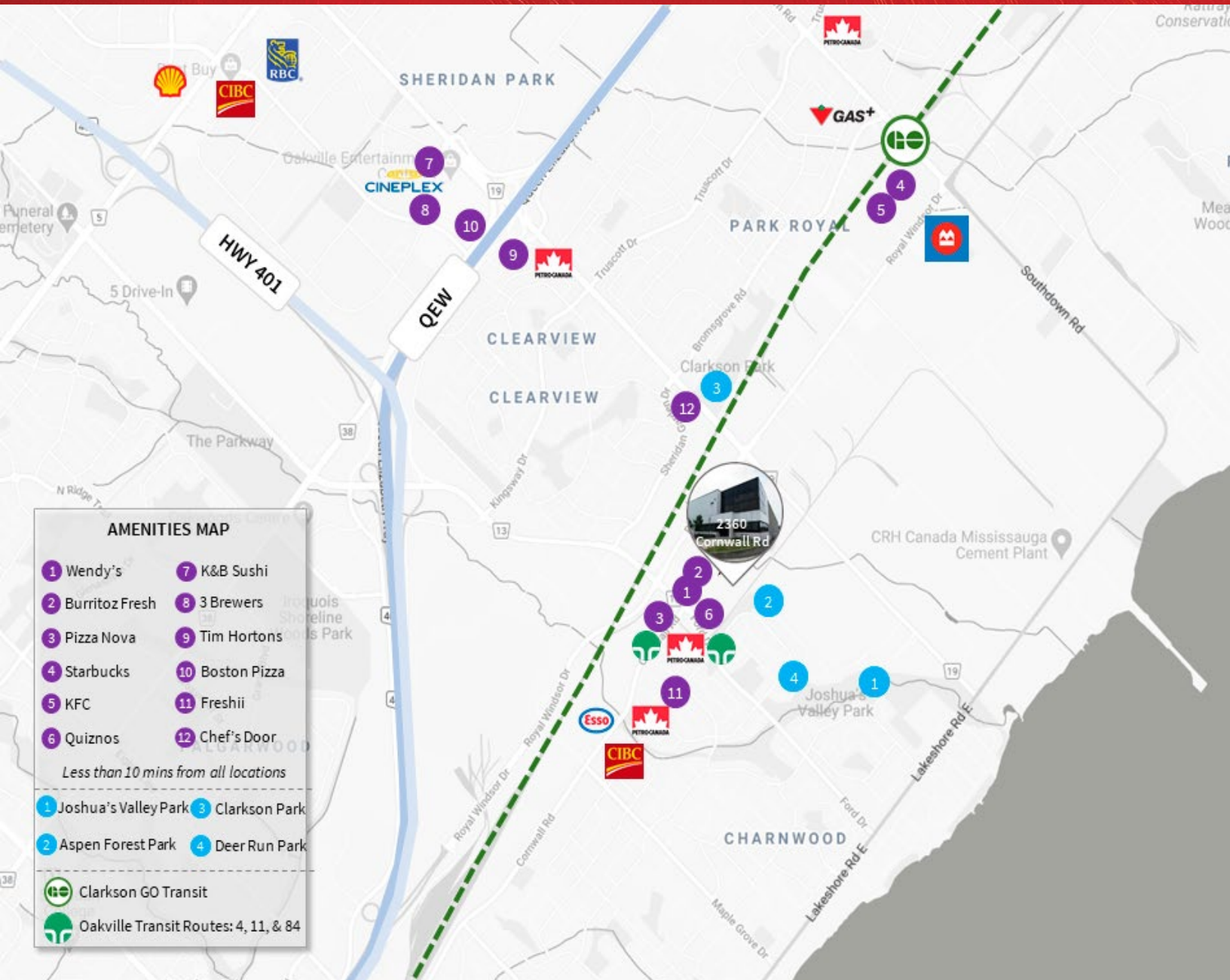
For more information, contact:

Michael Navo**
Senior Vice President
+1 905 755 4641
michael.navo@am.jll.com

Nicholas Stryland**
Executive Vice President
+1 416 577 6776
nicholas.stryland@am.jll.com

Nicole Jennings*
Associate
+1 905 766 4170
nicole.jennings@am.jll.com

Amenities Map



For more information, contact:

Michael Navo**
Senior Vice President
+1 905 755 4641
michael.navo@am.jll.com

Nicholas Stryland**
Executive Vice President
+1 416 577 6776
nicholas.stryland@am.jll.com

Nicole Jennings*
Associate
+1 905 766 4170
nicole.jennings@am.jll.com