

# For Sublease

## 2345 Yonge Street

Partial 4th Floor



### PROPERTY DETAILS

**SUITE SIZE:**

5,931 sq. ft.

**NET RENT:**

Contact Listing Agents

**TERM:**

April 29<sup>th</sup>, 2022

**ADDITIONAL RENT:**

\$24.60 (2020 estimate)

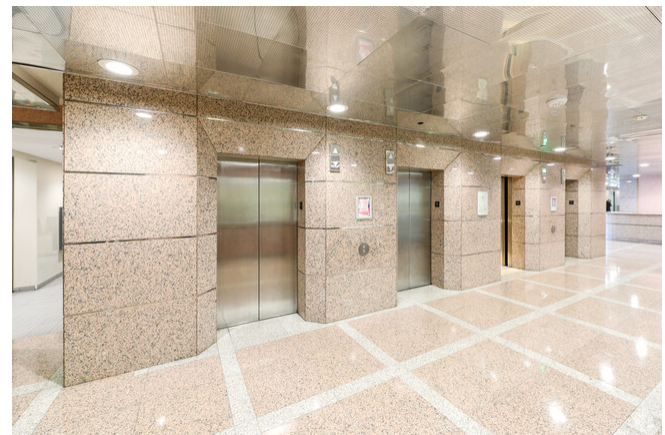
**AVAILABLE:**

Immediately



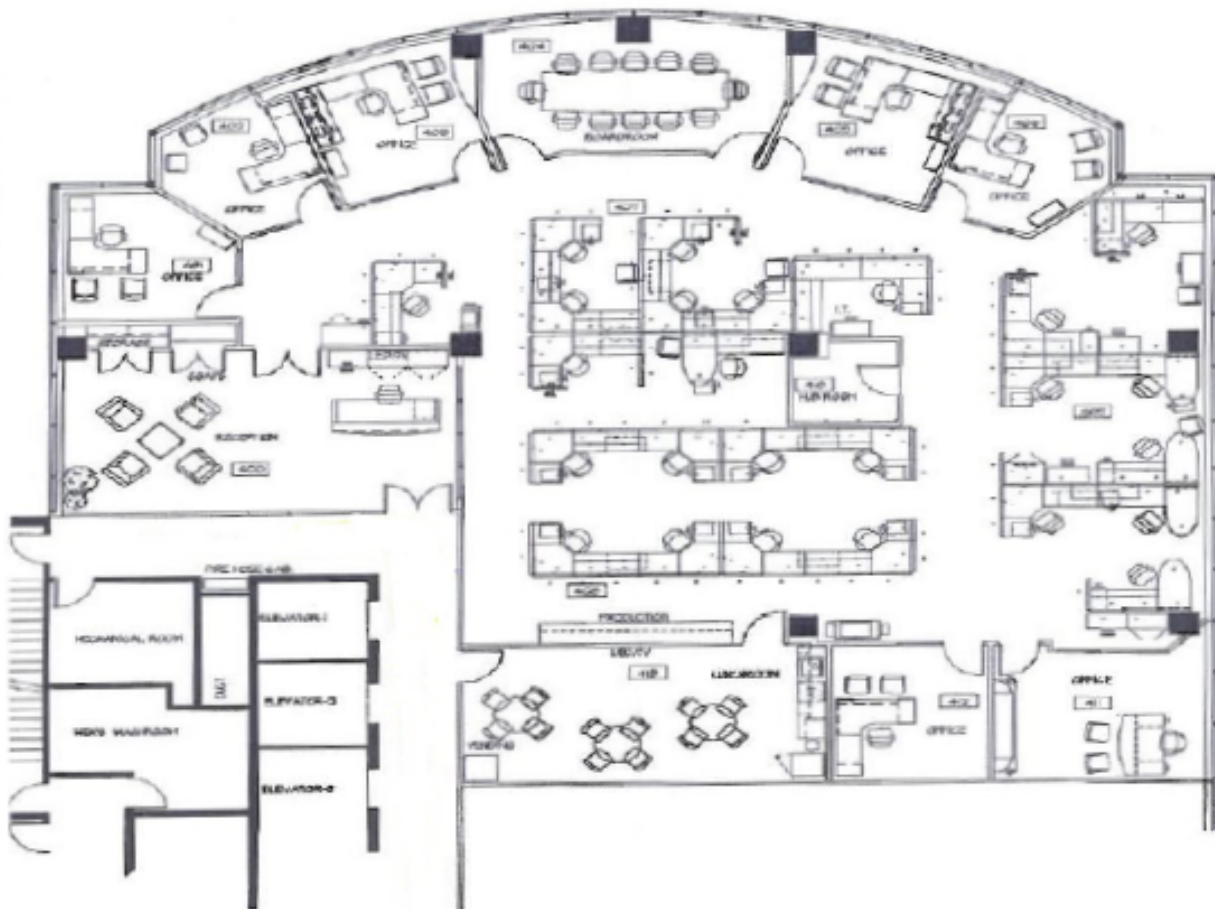
### SPACE HIGHLIGHTS

- Built-out with reception area, 7 private offices, boardroom, lunchroom, and large open area
- Steps to the Eglinton Subway Station
- Class A Office Building
- Amenity rich neighborhood
- AAA Sub-landlord
- Ready for immediate occupancy



# Floor Plan

## Partial 4th Floor



For more information, contact:

Jennifer Millar\*\*  
Associate  
+1 (416) 238-4817  
jennifer.millar@am.jll.com

Adam Harun\*\*  
Associate  
+1 (416) 238-4806  
adam.harun@am.jll.com