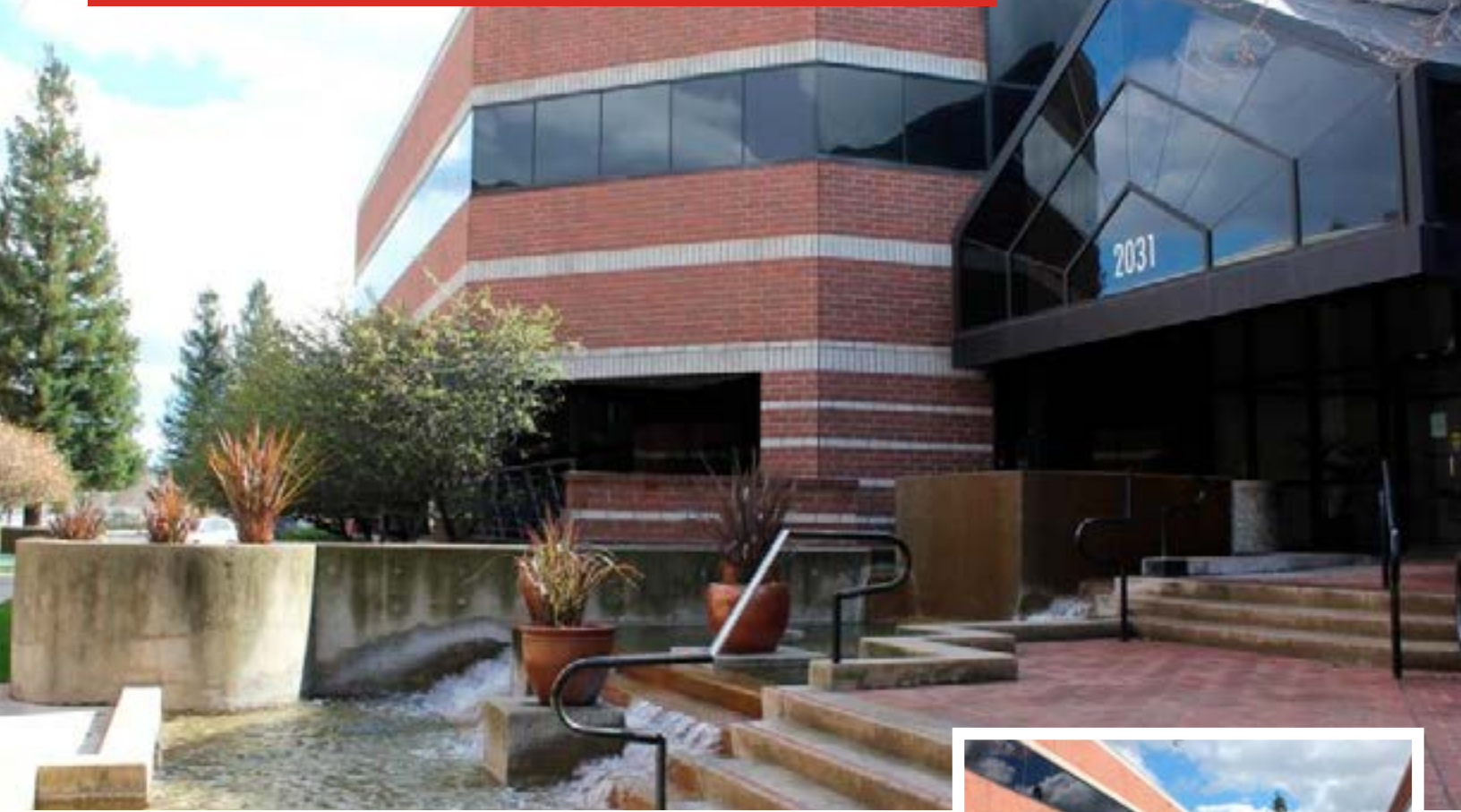


2031-2033 HOWE AVENUE



FOR LEASE

2031-2033 Howe Avenue

Sacramento, CA 95825

Property Features

- ±2,941 - 8,436 SF Available
- Professional Office Space
- Multi-tenant brick buildings with an attractive central courtyard
- Secured parking available
- Close proximity to Arden Fair Mall and numerous retail amenities
- Immediate access to Business 80 and Highway 160



Mike Stassi

+1 916 440 1824

CA Lic. # 01198564

michael.stassi@am.jll.com

Daniel Baker

+1 916 440 1839

CA Lic. # 01705912

daniel.baker@am.jll.com

Jim King

+1 916 446 8270

CA Lic. # 00838580

jim.king@cbre.com



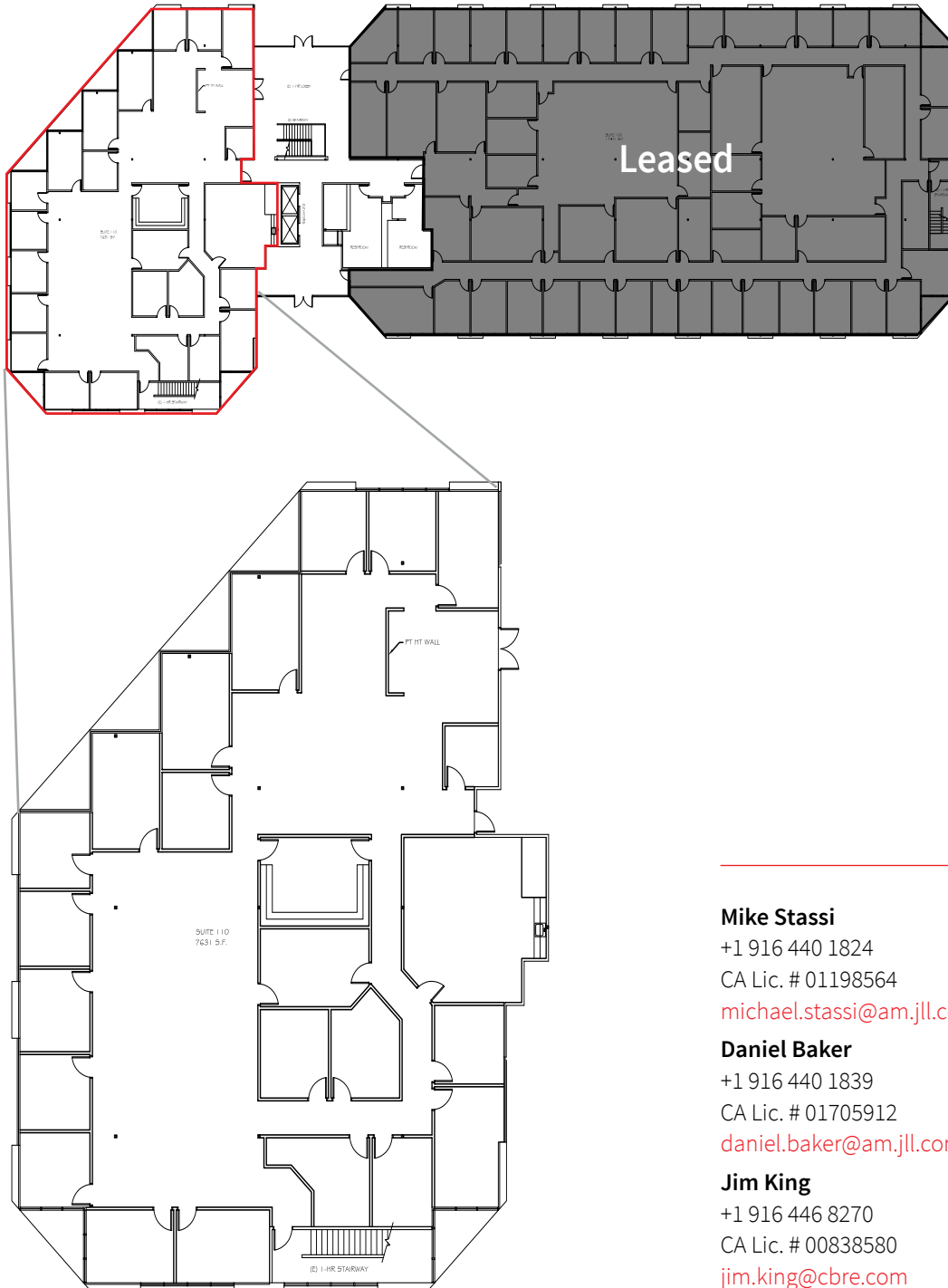


FOR LEASE

2031-2033 HOWE AVE, SACRAMENTO

2031 Howe Ave - Suite 110

- ±8,436 SF Available



Mike Stassi
+1 916 440 1824
CA Lic. # 01198564
michael.stassi@am.jll.com

Daniel Baker
+1 916 440 1839
CA Lic. # 01705912
daniel.baker@am.jll.com

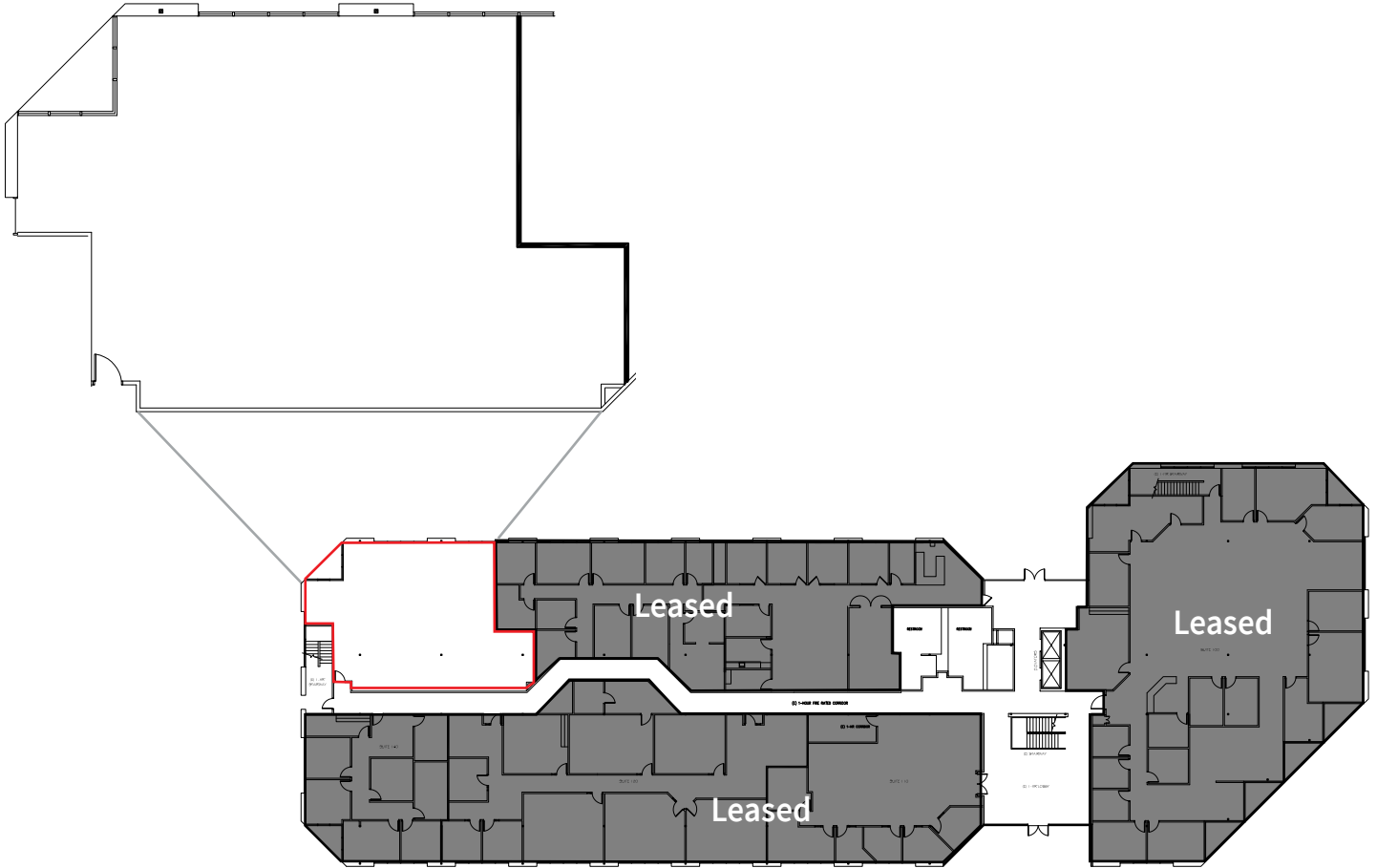
Jim King
+1 916 446 8270
CA Lic. # 00838580
jim.king@cbre.com

FOR LEASE

2031-2033 HOWE AVE, SACRAMENTO

2033 Howe Ave - Suite 150

- ±2,941 SF Available



Mike Stassi

+1 916 440 1824

CA Lic. # 01198564

michael.stassi@am.jll.com

Daniel Baker

+1 916 440 1839

CA Lic. # 01705912

daniel.baker@am.jll.com

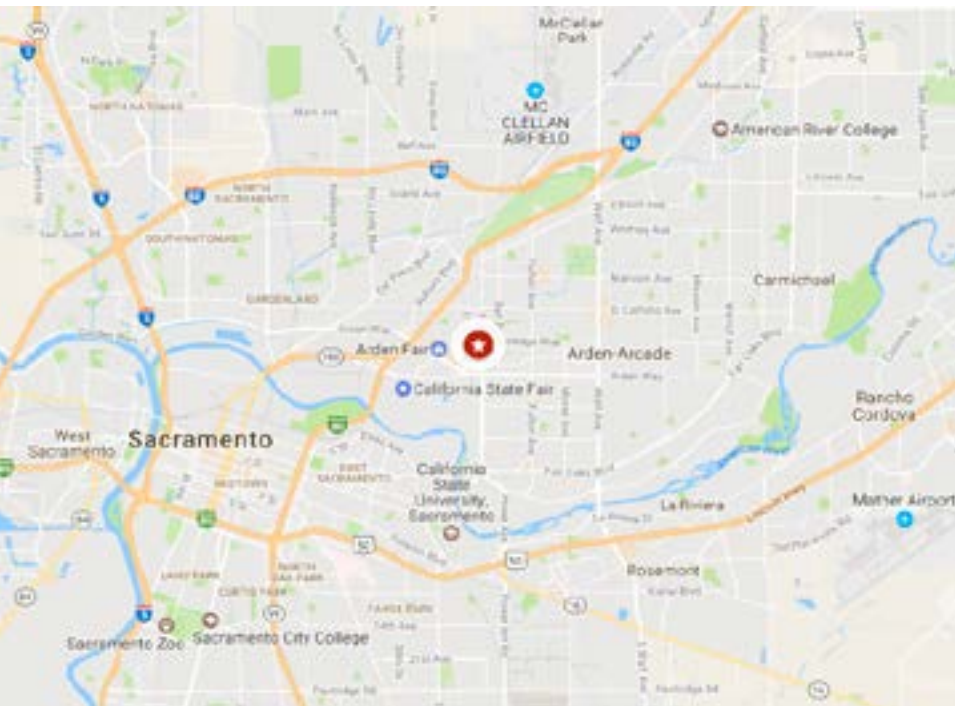
Jim King

+1 916 446 8270

CA Lic. # 00838580

jim.king@cbre.com

AERIAL MAP



Mike Stassi
+1 916 440 1824
CA Lic. # 01198564
michael.stassi@am.jll.com

Daniel Baker
+1 916 440 1839
CA Lic. # 01705912
daniel.baker@am.jll.com

Jim King
+1 916 446 8270
CA Lic. # 00838580
jim.king@cbre.com