



2025 Broadway

New York, NY

Former Duane Reade Available for Sublease

Space

Ground Floor: 2,262 sf
 Lower Level: 5,406 sf
 Total: 7,668 sf

Frontage

72'

Possession

Arranged

Term

Through 3/31/2034

Asking Rent

\$475,000 per annum gross

Former Duane Reade store #14208

Neighbors



Demographics

Radius	'19 Pop	Total HH	Avg. HHI
.25 Mile	28,109	16,064	\$191,352
.5 Mile	78,458	43,092	\$198,596
.75 Mile	112,425	62,380	\$193,418



Michael Riley
 +1 212 812 5901

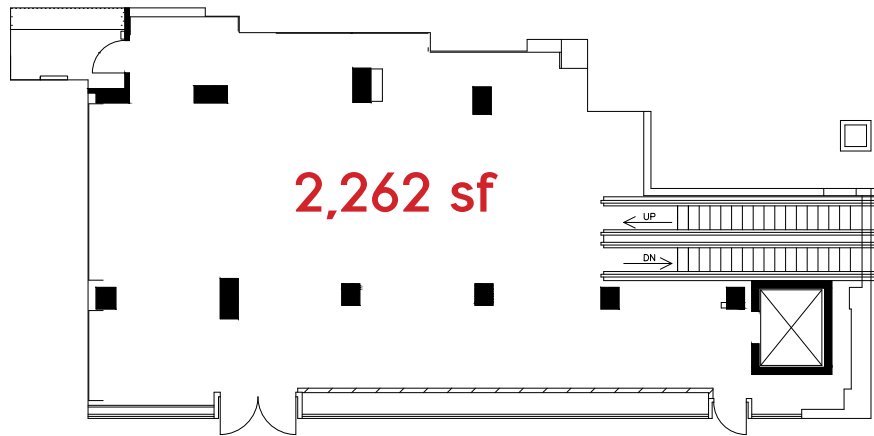
Michael.Riley@am.jll.com

Patrick A. Smith
 +1 212 812 5888

Patricka.Smith@am.jll.com

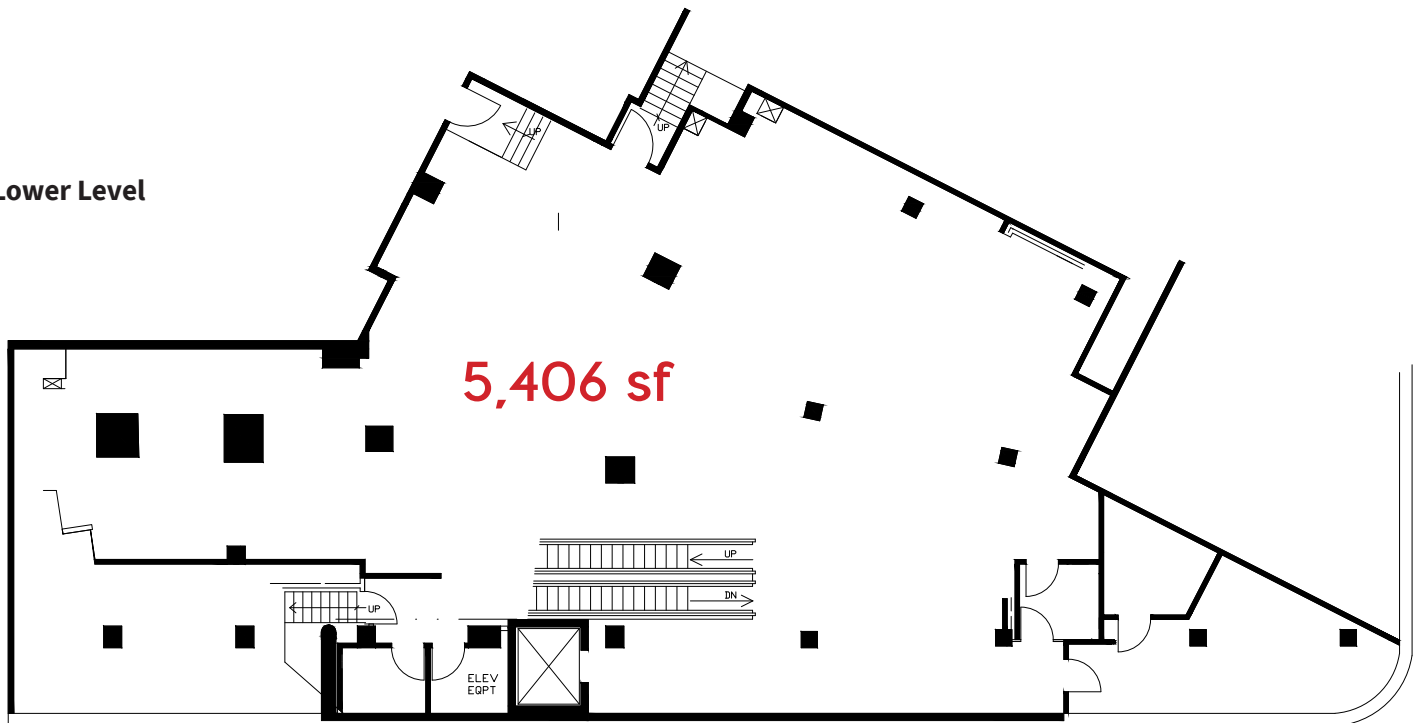
2025 Broadway

Ground Floor



Broadway

Lower Level



Jones Lang LaSalle Brokerage, Inc. | 330 Madison Avenue New York, NY 10017

DISCLAIMER

Although information has been obtained from sources deemed reliable, neither Owner nor JLL makes any guarantees, warranties or representations, express or implied, as to the completeness or accuracy as to the information contained herein. Any projections, opinions, assumptions or estimates used are for example only. There may be differences between projected and actual results, and those differences may be material. The Property may be withdrawn without notice. Neither Owner nor JLL accepts any liability for any loss or damage suffered by any party resulting from reliance on this information. If the recipient of this information has signed a confidentiality agreement regarding this matter, this information is subject to the terms of that agreement. ©2020 Jones Lang LaSalle IP, Inc. All rights reserved.