

Life Science
Micro-cluster
30,600 SF

For Lease

1 & 3 Strathmore, Natick MA

Don Domoretsky
+1 617 531 4113
don.domoretsky@am.jll.com

Phil DeSimone
+1 617 531 4188
philip.desimone@am.jll.com

Andrew Sherman
+1 617 531 4147
andrew.sherman@am.jll.com



BUILDING ONE

BUILDING THREE

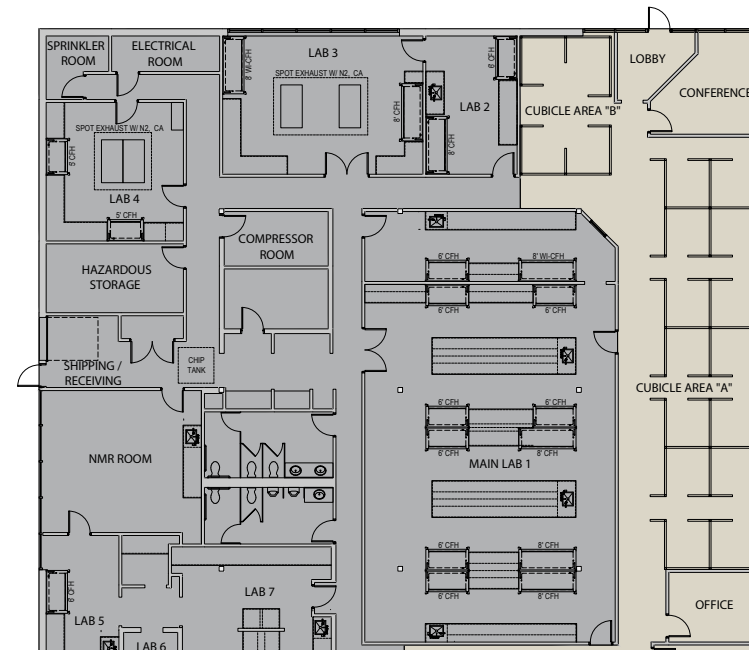


1 & 3 Strathmore, Natick MA

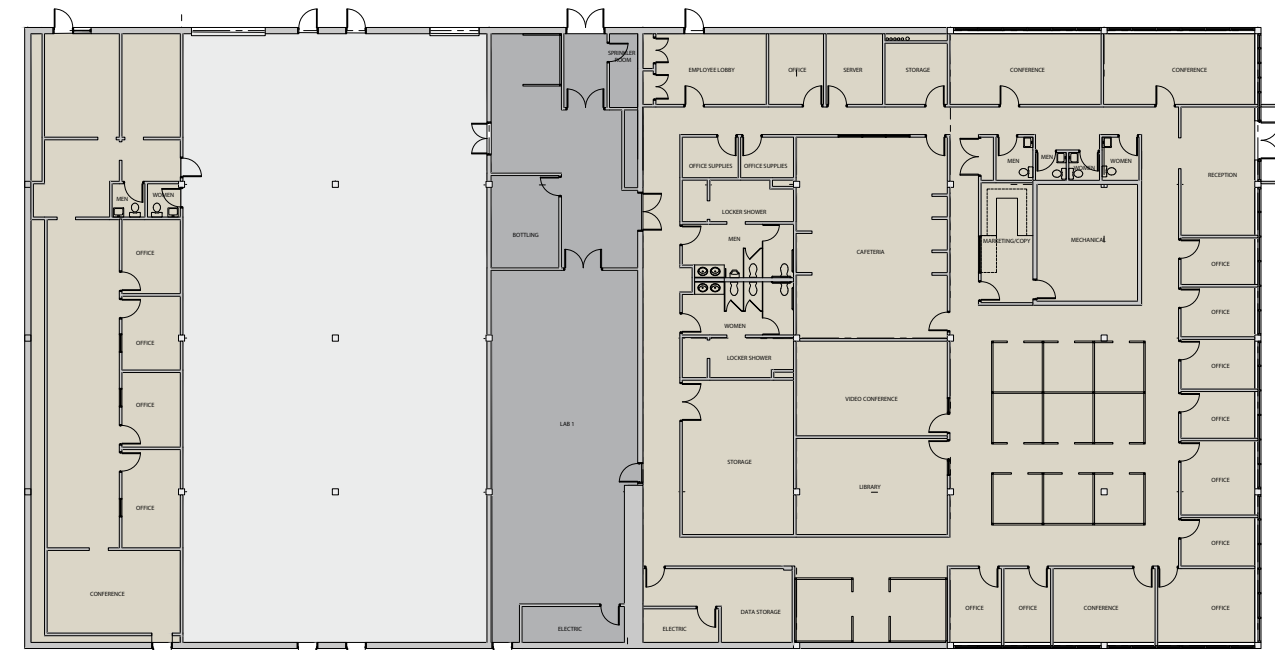
Life Science Micro-cluster

1 & 3 Strathmore Road in Natick are ideally suited to support a wide range of biology and chemistry uses. With 10,200 square feet and 20,400 square feet of available space, respectively, these single story buildings offer tenants a robust infrastructure to meet their science and research needs. Each building has dedicated parking (92 spaces combined) and possible exterior branding options.

The buildings are located in a dense micro-cluster of life science firms on Strathmore Road near the Framingham/Natick commercial center directly off of Route 9. The site has easy access to the Mass Pike/Route 90 and is only a 30 minute drive to Boston and Logan International Airport. Within a one-mile radius, tenants will find hundreds of dining, retail and entertainment options in the Route 9 commercial district, including the Natick Mall, Shoppers World and Sherwood Plaza Shopping Centers, among other options.



Building One - 10,200 SF



Building Three - 20,400 SF

■ = office ■ = lab ■ = warehouse

STRATHMORE ROAD

STRATHMORE ROAD