

*For Sublease*



**1900** UNIVERSITY AVENUE  
*East Palo Alto*

**Suite 100 - ±2,166 SF**

LED: June 30, 2021

*Bret Yerkovich*

650.480.2229

Bret.Yerkovich@am.jll.com

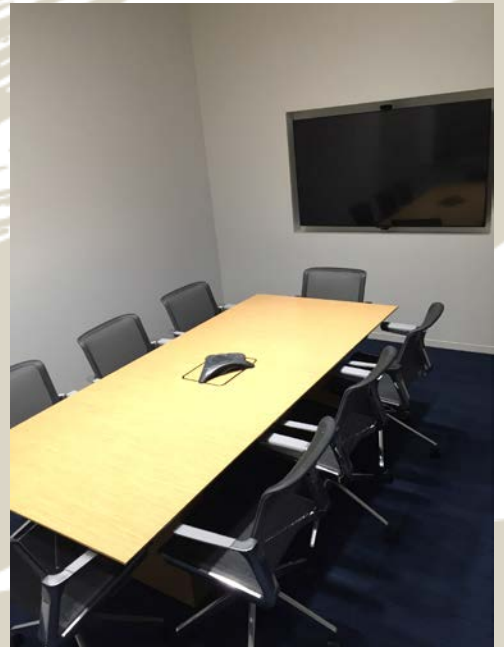
RE License #01916826



Jones Lang LaSalle Brokerage, Inc.  
RE License #01856260

# 1900 UNIVERSITY AVENUE

*East Palo Alto*  
Suite 100 - ±2,166 SF



## *Property Highlights*

- LED: 06/30/2021
- New Interiors
- Potential Plug & Play
- Credit Sublessor
- Double Door Entry
- Flexible Layout
- Excellent Window-line
- Onsite Amenities including Four Seasons Hotel



Jones Lang LaSalle Brokerage, Inc.  
RE License #01856260

*Bret Yerkovich*

650.480.2229

Bret.Yerkovich@am.jll.com

RE License #01916826

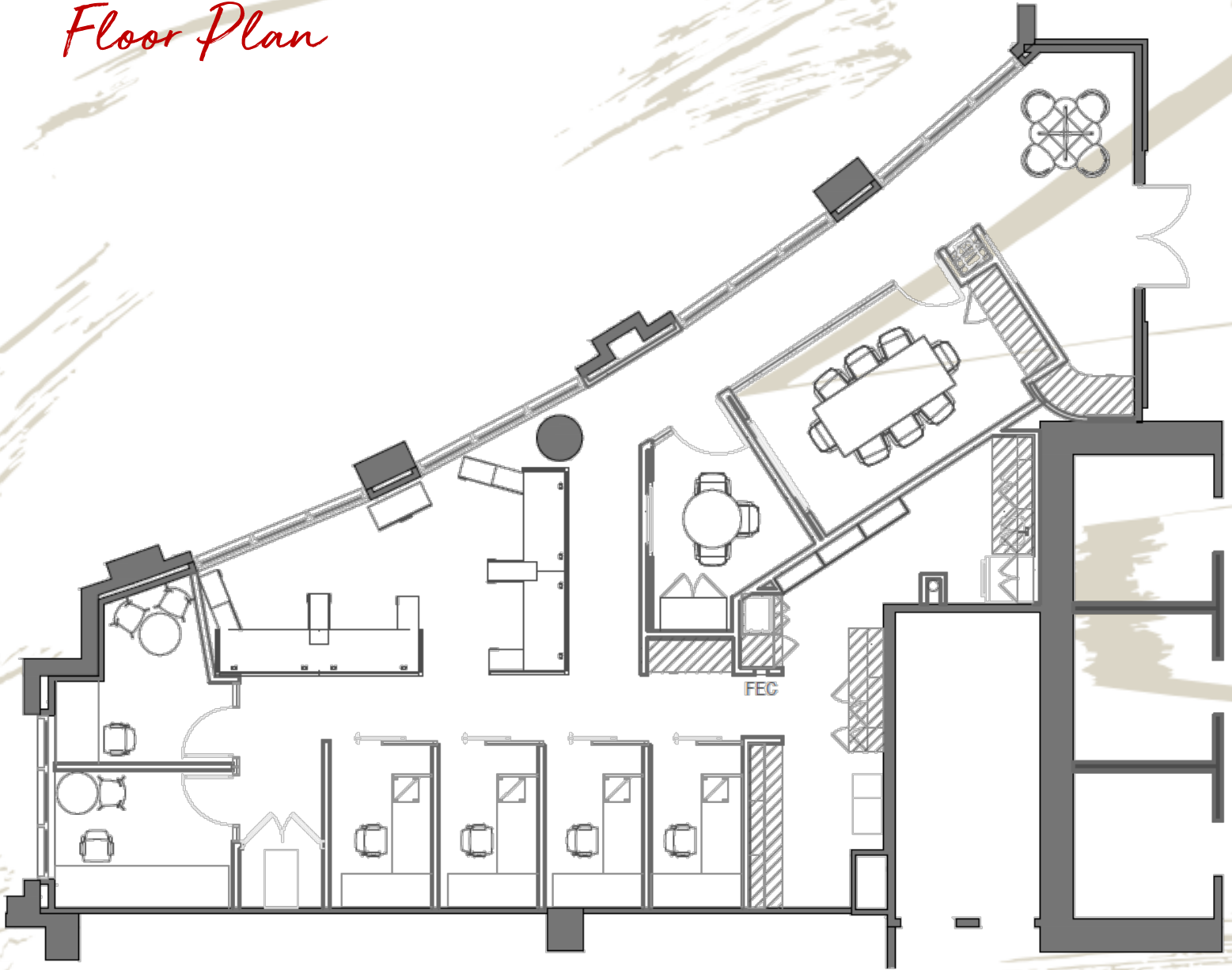
# 1900

UNIVERSITY AVENUE

*East Palo Alto*

Suite 100 - ±2,166 SF

## *Floor Plan*



*Achieve  
Ambitions*

Jones Lang LaSalle Brokerage, Inc.  
RE License #01856260

*Bret Yerkovich*

650.480.2229

Bret.Yerkovich@am.jll.com

RE License #01916826

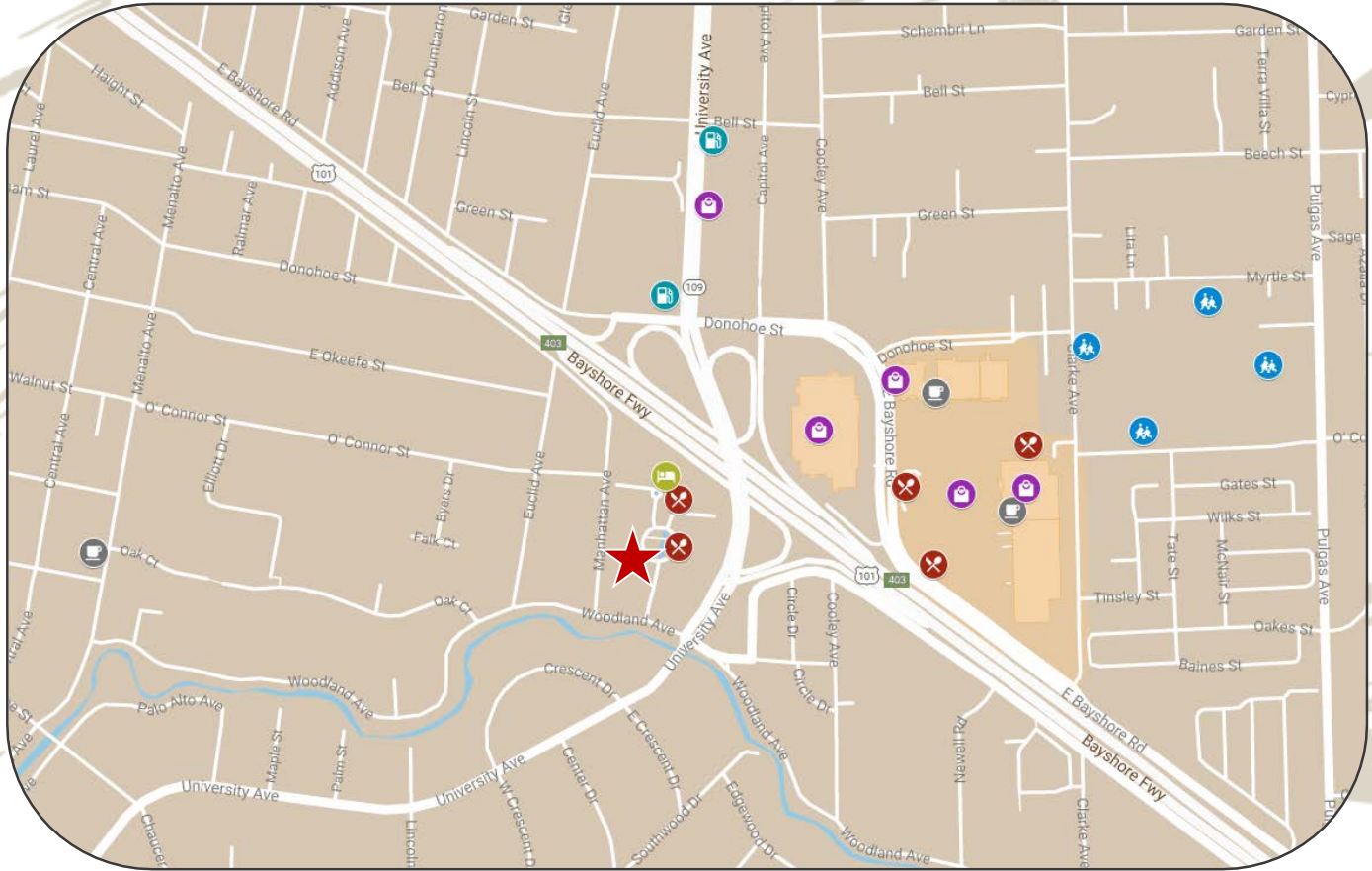
# 1900

## UNIVERSITY AVENUE

*East Palo Alto*

Suite 100 - ±2,166 SF

### *Amenities*



#### **Restaurants/Fast Food**

- Quattro
- Taco Bell
- McDonald's
- San Francisco Soup Company
- Wingstop

#### **Coffee**

- Café Zoe
- Starbucks

#### **Retail**

- IKEA
- Nordstrom Rack
- Gateway 101
- Cardenas Market
- AutoZone

#### **Hotel**

- Four Seasons Hotel

#### **Schools**

- Brentwood Elementary School
- East Palo Alto Academy
- Ronald McNair Academy
- The Primary School



Jones Lang LaSalle Brokerage, Inc.  
RE License #01856260

*Bret Yerkovich*

650.480.2229

Bret.Yerkovich@am.jll.com

RE License #01916826