

Land for sale

1231 Willis Road

Chesterfield County, Virginia



Features

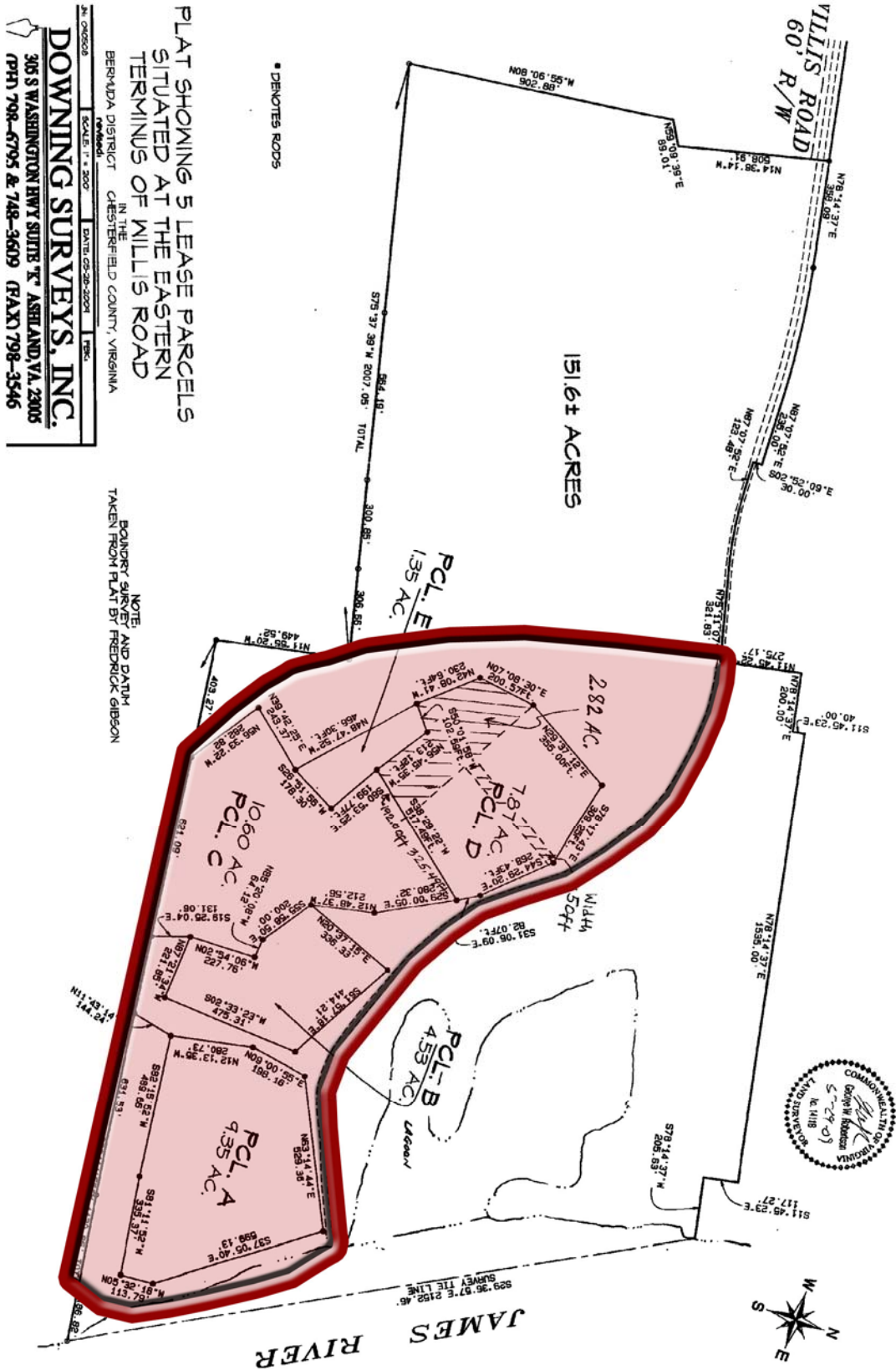
- 35 acres
- Zoned I-3, Heavy Industrial
- Secured site
- Rail nearby
- Deep water access
- Income producing
- 1 mile from I-95 / Willis Road exit

For more information, please contact:

Scott Keeton
+1 804 200 6460
Scott.Keeton@am.jll.com

Jimmy Appich
+1 804 200 6420
Jimmy.Appich@am.jll.com

1231 Willis Road Chesterfield County, Virginia Plat



PLAT SHOWING 5 LEASE PARCELS
SITUATED AT THE EASTERN
TERMINUS OF WILLIS ROAD

BERNADA DISTRICT
IN THE
CHESTERFIELD COUNTY, VIRGINIA

DOWNING SURVEYS, INC.
305 S WASHINGTON HWY SUITE 7th ASHLAND, VA, 23005
(PH) 798-6795 & 748-3609 (FAX) 798-3546