

1 1 5 5

ROBSON STREET



*For Lease*

**NEWLEY RENOVATED**

- Improved office premises
- Newly upgraded lobby
- Updated building facade

LEASING INQUIRIES

Andrew Astles  
1 604 998 6045  
[andrew.astles@am.jll.com](mailto:andrew.astles@am.jll.com)

Mark Trepp\*  
1 604 998 6035  
[mark.trepp@am.jll.com](mailto:mark.trepp@am.jll.com)



# JOHN ROBSON PLACE

## THE LOCATION

John Robson Place is located between Bute and Thurlow Streets in the heart of Robson Street, Vancouver's most famous shopping area. Robson Street has endless amenities ranging from coffee shops, hotels, banks, and more. It is steps from the fine dining restaurants and Shangri-La on Alberni Street, and the development of the new high-rise at 745 Thurlow Street. Additionally, John Robson Place is minutes from Burrard SkyTrain Station and several bus lines.

## AVAILABLE SUITES

SUITE	SF	AVAILABILITY	COMMENTS
Suite 500	2,706 SF	Immediately	Two offices with an updated and bright kitchen and lounge. Open area with a West facing balcony. Newly carpeted and painted.
Suite 505	2,020 SF	Immediately	Features some existing improvements.
Suite 606	1,195 SF	Immediately	Comments to come

## SALIENT DETAILS

ASKING RENT: Contact listing agent for details

ADDITIONAL RENT: \$17.50 psf/pa (2021 estimate)

99



TRANSIT SCORE

97



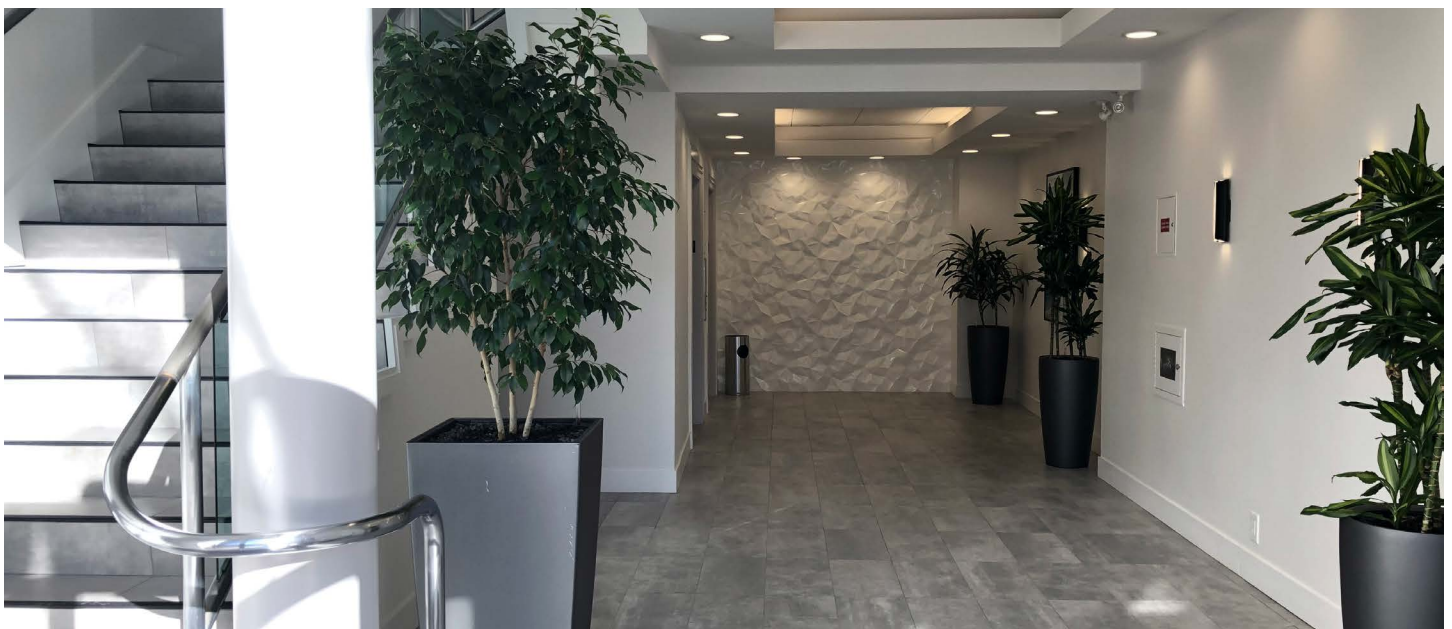
WALK SCORE

100



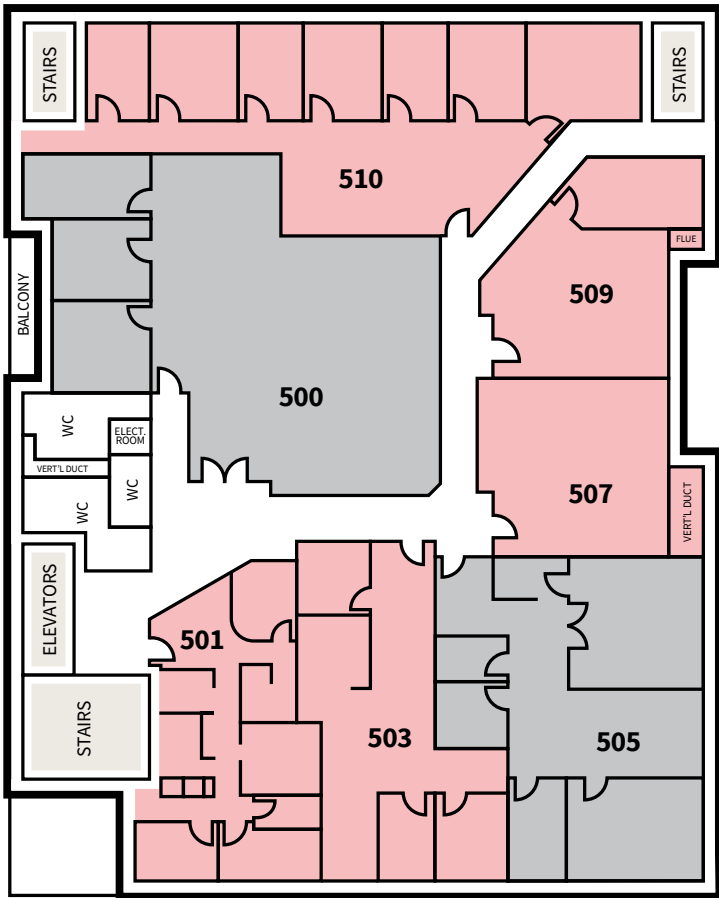
BIKE SCORE

## NEWLY UPGRADED LOBBY

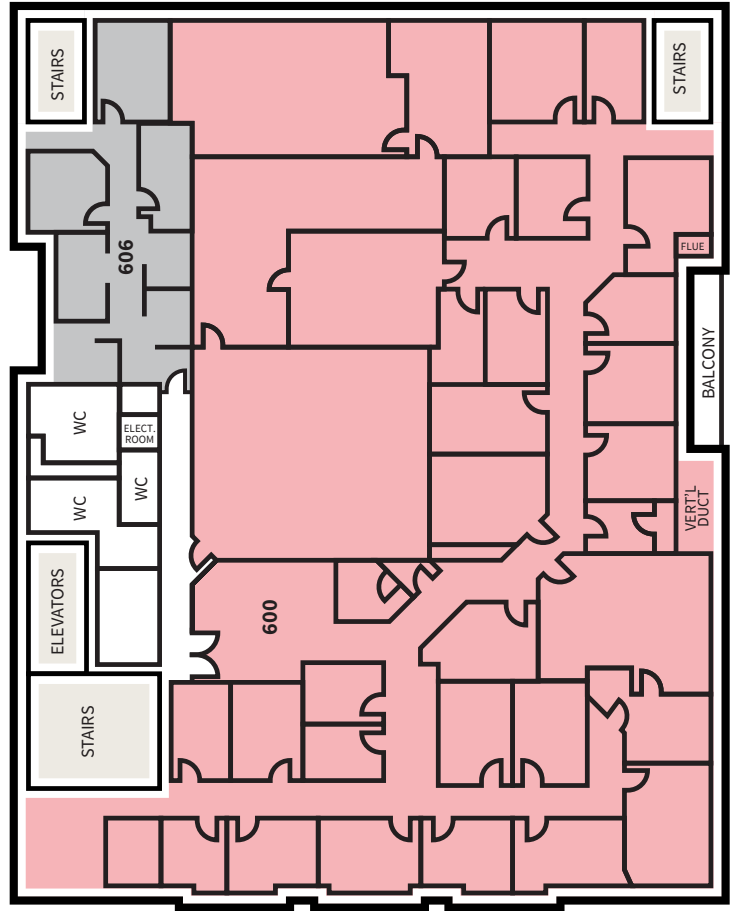


JOHN ROBSON PLACE

SUITE 500/505



SUITE 606



FOR MORE INFORMATION OR TO VIEW, PLEASE CONTACT:

Andrew Astles

1 604 998 6045

[andrew.astles@am.jll.com](mailto:andrew.astles@am.jll.com)

Mark Trepp\*

1 604 998 6035

[mark.trepp@am.jll.com](mailto:mark.trepp@am.jll.com)

Jones Lang LaSalle Real Estate  
Services, Inc.

510 West Georgia Street, Suite 2150  
Vancouver, BC V6B 0M3