

1 1 5 5

ROBSON STREET



*For Lease*

**2ND FLOOR - 9,958 SF**

- Zoned for general office use
- Newly upgraded lobby
- Updated building façade
- Bike storage

LEASING INQUIRIES

Andrew Astles  
1 604 998 6045  
[andrew.astles@am.jll.com](mailto:andrew.astles@am.jll.com)

Mark Trepp\*  
1 604 998 6035  
[mark.trepp@am.jll.com](mailto:mark.trepp@am.jll.com)





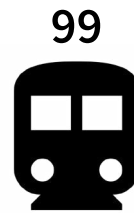
# JOHN ROBSON PLACE

## THE LOCATION

John Robson Place is located between Bute and Thurlow Streets in the heart of Robson Street, Vancouver's most famous shopping area. Robson Street has endless amenities ranging from coffee shops, hotels, banks, and more. It is steps from the fine dining restaurants and Shangri-La on Alberni Street, and the development of the new high-rise at 745 Thurlow Street. Additionally, John Robson Place is minutes from Burrard SkyTrain Station and several bus lines.

## SALIENT DETAILS

AVAILABLE SPACE:	2nd Floor - 9,958 SF
AVAILABILITY:	Immediately
ASKING RENT:	Contact listing agent for details
ADDITIONAL RENT:	\$17.50 psf/pa (2021 estimate)



TRANSIT SCORE



WALK SCORE



BIKE SCORE

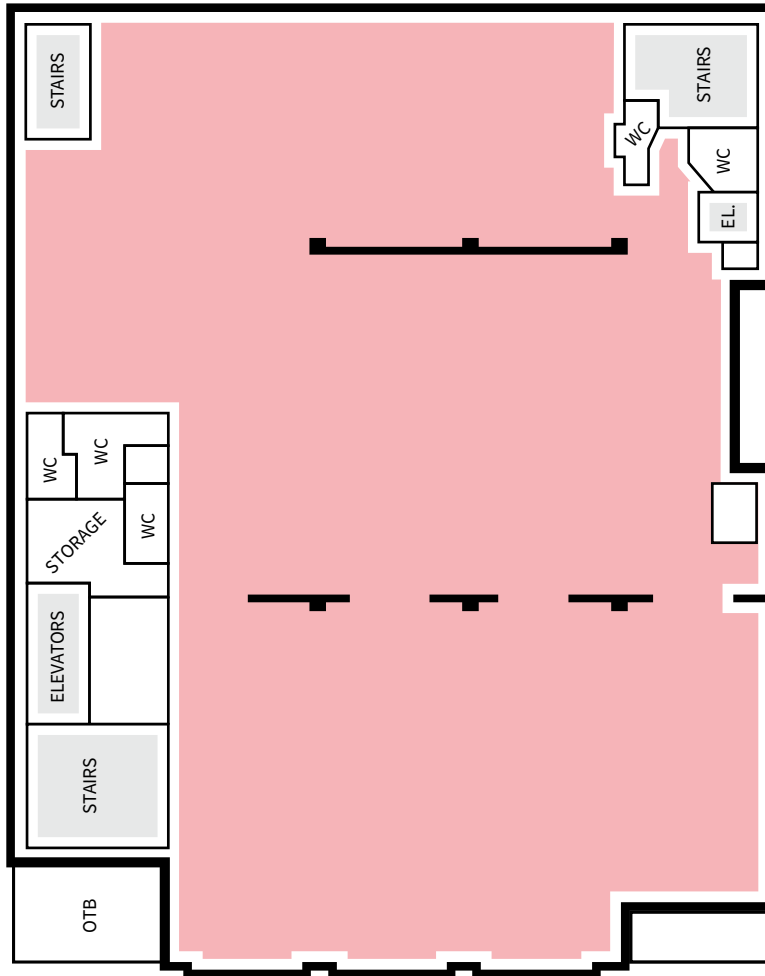
## NEWLY UPGRADED LOBBY





# JOHN ROBSON PLACE

## 2ND FLOOR PLAN



FOR MORE INFORMATION OR TO VIEW, PLEASE CONTACT:

Andrew Astles

1 604 998 6045

[andrew.astles@am.jll.com](mailto:andrew.astles@am.jll.com)

Mark Trepp\*

1 604 998 6035

[mark.trepp@am.jll.com](mailto:mark.trepp@am.jll.com)

Jones Lang LaSalle Real Estate  
Services, Inc.

510 West Georgia Street, Suite 2150  
Vancouver, BC V6B 0M3