



For Lease

1122

Mainland Street

Centrally Located Office Opportunity

Located in the heart of Yaletown at the corner of Mainland and Helmcken. The building offers excellent access to fine restaurants, the Opus Hotel and retail shopping. The property is located one block from a SkyTrain stop.



Salient Details

Available Space:	Suite 490 - 2,799 s.f. Suite 520/530 - 2,086 s.f.
Availability:	May 1, 2020
Asking Rent:	Contact agents for details
Additional	\$16.50 p.s.f./p.a.

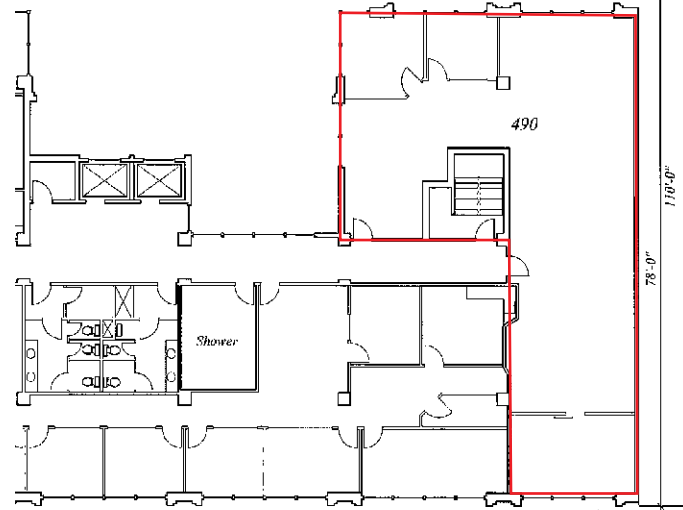
Building Features

- Opening windows
- Air Conditioning
- Underground parking
- Bike storage
- End-of-trip facilities
- Huge common area deck



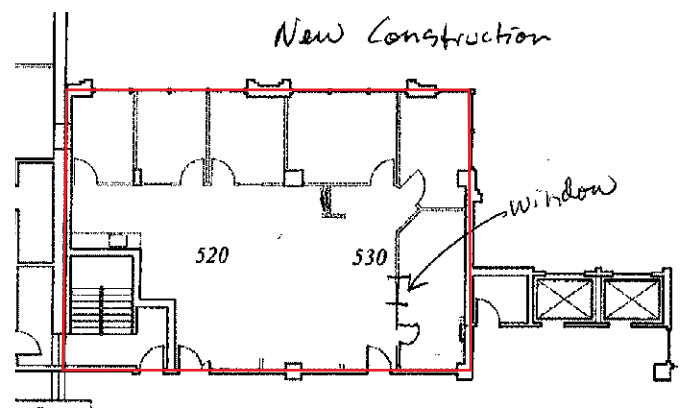
Suite 490 Features

- 2 Offices
- 1 meeting room
- kitchen
- Open plan



Suite 520/530 Features

- 5 Offices
- 1 large boardroom
- kitchenette
- Open plan



For more information or to view, please contact:

Mark Trepp*
Executive Vice President
+1 604 998 6035
mark.trepp@am.jll.com
*Personal Real Estate Corporation

Corbin MacDonald*
Vice President
+1 604 998 6035
corbin.macdonald@am.jll.com
*Personal Real Estate Corporation

