



For Lease

1122 Mainland Street
Vancouver, British Columbia



CENTRALLY LOCATED OFFICE OPPORTUNITY

Located in the heart of Yaletown at the corner of Mainland and Helmcken, the building offers excellent access to fine restaurants, the Opus Hotel and retail shopping. The property is located one block from the Yaletown/Roundhouse SkyTrain station.

SALIENT DETAILS

Available Space	Suite 202 - 779 sf
	Suite 500 - 2,956 sf
	Suite 520/530 - 2,086 sf

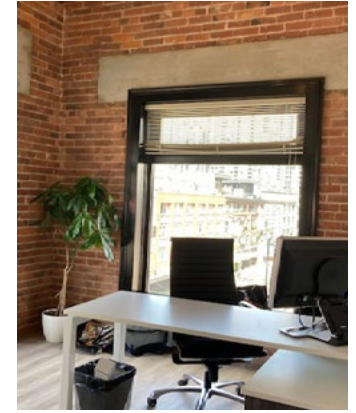
Availability	Suite 202 - Immediately
	Suite 500 - 30 days' notice
	Suite 520/530 - Immediately

Asking Rent	Contact agents for details
-------------	----------------------------

Additional Rent	\$16.50 psf/pa
-----------------	----------------

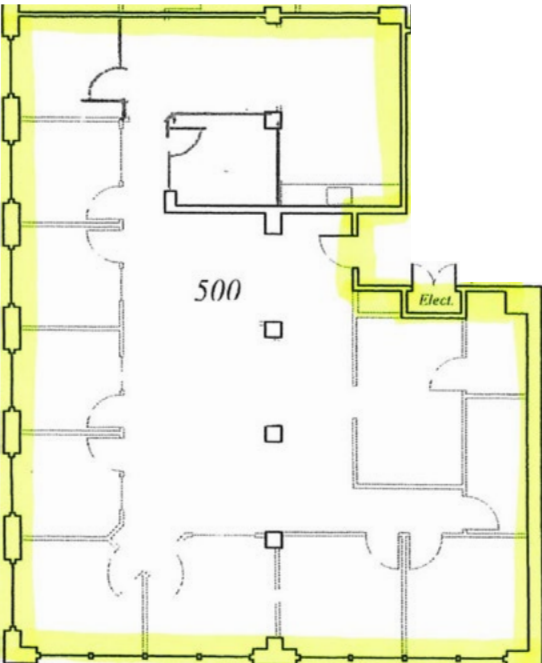
BUILDING FEATURES

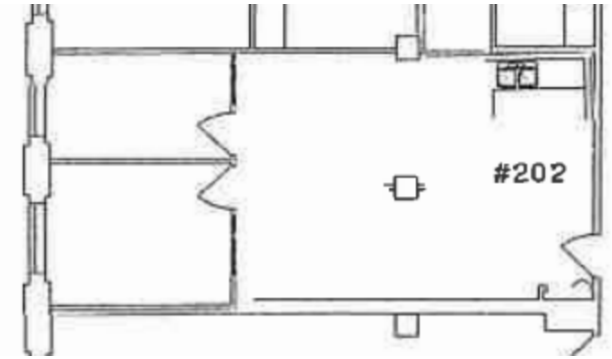
- Opening windows
- Air conditioning
- Bike storage
- End-of-trip facilities
- Huge common area deck
- Underground secure parking



SUITE 500 FEATURES

- 9 offices, boardroom, kitchen and open plan
- Corner unit with glass on 2 sides
- 20' exposed ceilings
- Exposed brick and timber design



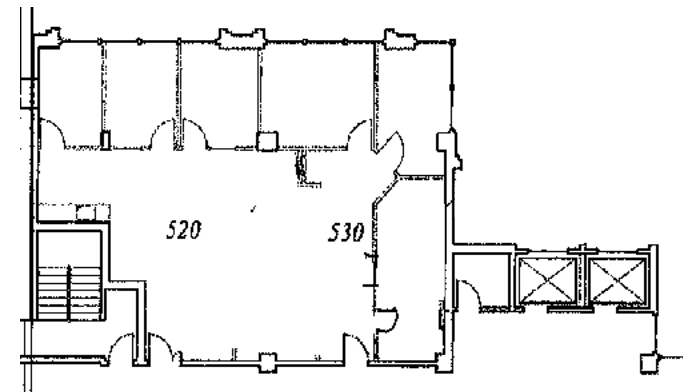


SUITE 202 FEATURES

- Exposed brick and timber design
- Nicely improved
- 2 private offices
- Kitchen
- Open plan
- Polished concrete floors

SUITE 520/530 FEATURES

- 5 offices
- Large boardroom
- Open plan
- Kitchen
- Exposed concrete ceilings



CONTACT

Mark Trepp*
 Executive Vice President
 +1 604 998 6035
 mark.trepp@am.jll.com

Corbin MacDonald*
 Vice President
 +1 604 998 6034
 corbin.macdonald@am.jll.com

*Personal Real Estate Corporation

*Personal Real Estate Corporation

