



For Lease

1122 Mainland Street
Vancouver, British Columbia



CENTRALLY LOCATED OFFICE OPPORTUNITY

Located in the heart of Yaletown at the corner of Mainland and Helmcken. The building offers excellent access to fine restaurants, the Opus Hotel and retail shopping. The property is located one block from a SkyTrain stop.

SALIENT DETAILS

Available Space	Suite 200A - 779 sf Suite 520/530 - 2,086 sf
Availability	Suite 200A - July 1, 2021 Suite 520/530 - Immediately
Asking Rent	Contact agents for details
Additonal Rent	\$16.50 psf/pa

BUILDING FEATURES

- Opening windows
- Air conditioning
- Bike storage
- End-of-trip facilities
- Huge common area deck

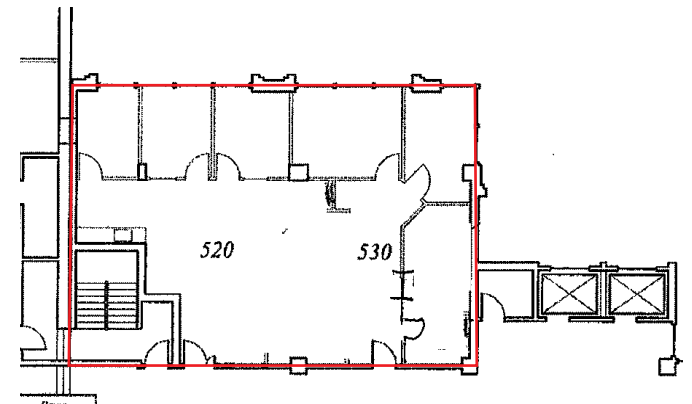


SUITE 200A FEATURES

- Exposed brick and timber design
- Nicely improved
- 2 private offices
- kitchen
- open plan
- some built in work stations

SUITE 520/530 FEATURES

- 5 offices
- large boardroom
- kitchen
- open plan



CONTACT

Mark Trepp*
 Executive Vice President
 +1 604 998 6035
 mark.trepp@am.jll.com

Corbin MacDonald*
 Vice President
 +1 604 998 6034
 corbin.macdonald@am.jll.com

*Personal Real Estate Corporation

*Personal Real Estate Corporation

