

# 1100

**GORHAM STREET  
NEWMARKET, ON**

# 3,578 SF

TOTAL RETAIL/OFFICE  
SPACE AVAILABLE

## FOR LEASE



- 55,506 sq. ft. Retail/Office Complex
- Professional landlord and on-site property management
- Free surface parking
- Parking ratio 3.8 per 1,000 sq. ft.

Major tenant include:

- OPRS Parts
- 360 Mobile
- Vin Bon

### FOR MORE INFORMATION:

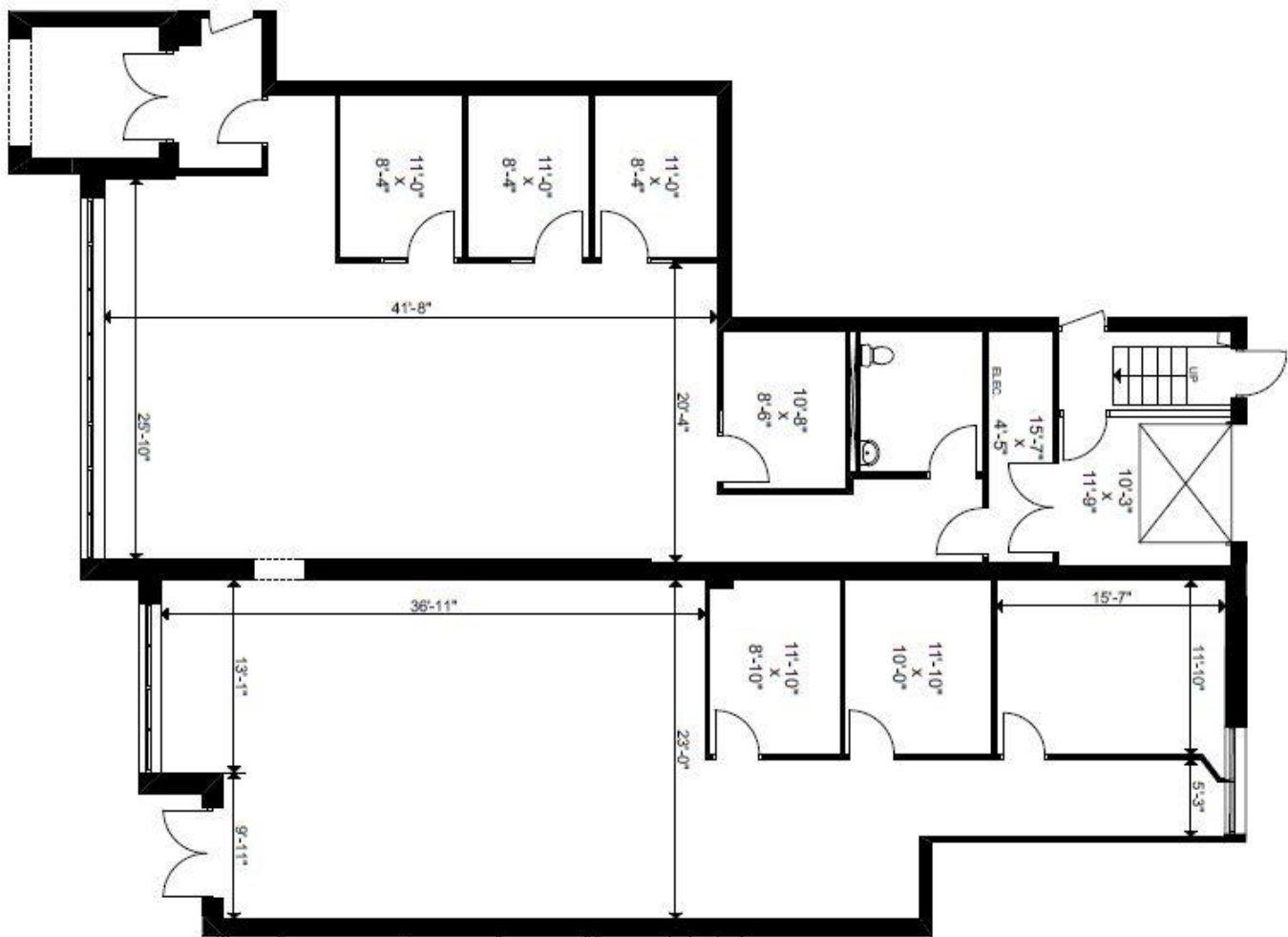
Jonathon Gray\*\*  
+1 647 728 0461  
jonathon.gray@am.jll.com  
\*\*Sales Representative



# GORHAM BUSINESS PARK

## 1100 GORHAM STREET

Unit	SF	Net Rent (PSF)	TMI (2018 Est.)	Space Details
10	3,578	\$12.00	\$6.59	Open space with offices and IT closet. Warehouse and Truck Level Loading Area.



### FOR MORE INFORMATION:

Jonathon Gray\*\*  
+1 647 728 0461  
jonathon.gray@am.jll.com  
\*\*Sales Representative

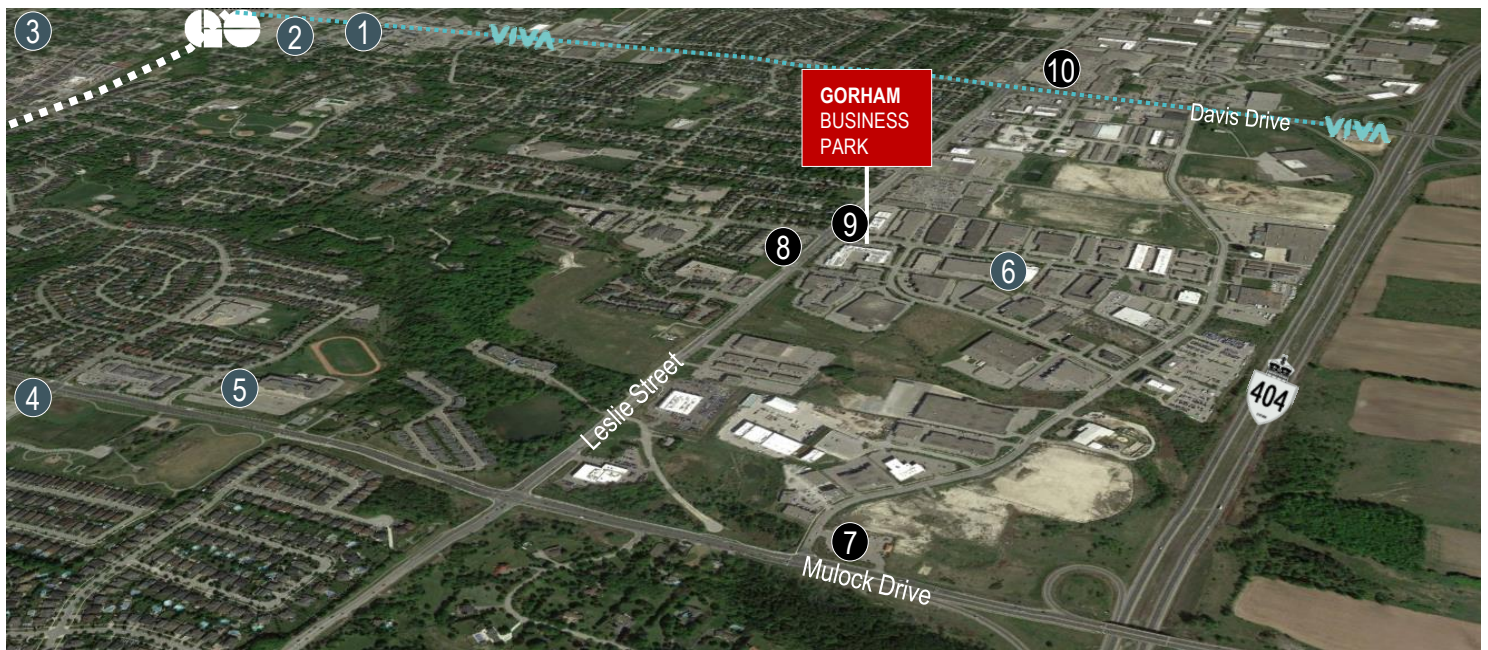


## Location

1100 Gorham Street is an retail/office complex located on the south side of Gorham Street in Newmarket, and in close proximity to a diverse group of retail and office properties, as well as near several mature and newer residential communities. The property is a short drive from Hwy 404 and Davis Drive. The single storey complex was built circa 1988 with brick veneer exterior. It is situated on approximately 4.28 acres of land and is comprised of 55,506 square feet of GLA.

# GORHAM BUSINESS PARK

## In Good Company



### Newmarket

83,000 residents, 2,400 businesses, growing health care and business services sectors

#### Buildings/Amenities

- 1 Southlake Regional Health Centre
- 2 Newmarket Youth & Recreation Centre
- 3 Upper Canada Mall
- 4 Magna Recreation Centre
- 5 Newmarket Theatre
- 6 Airborne Trampoline Park

#### Restaurants/Shopping

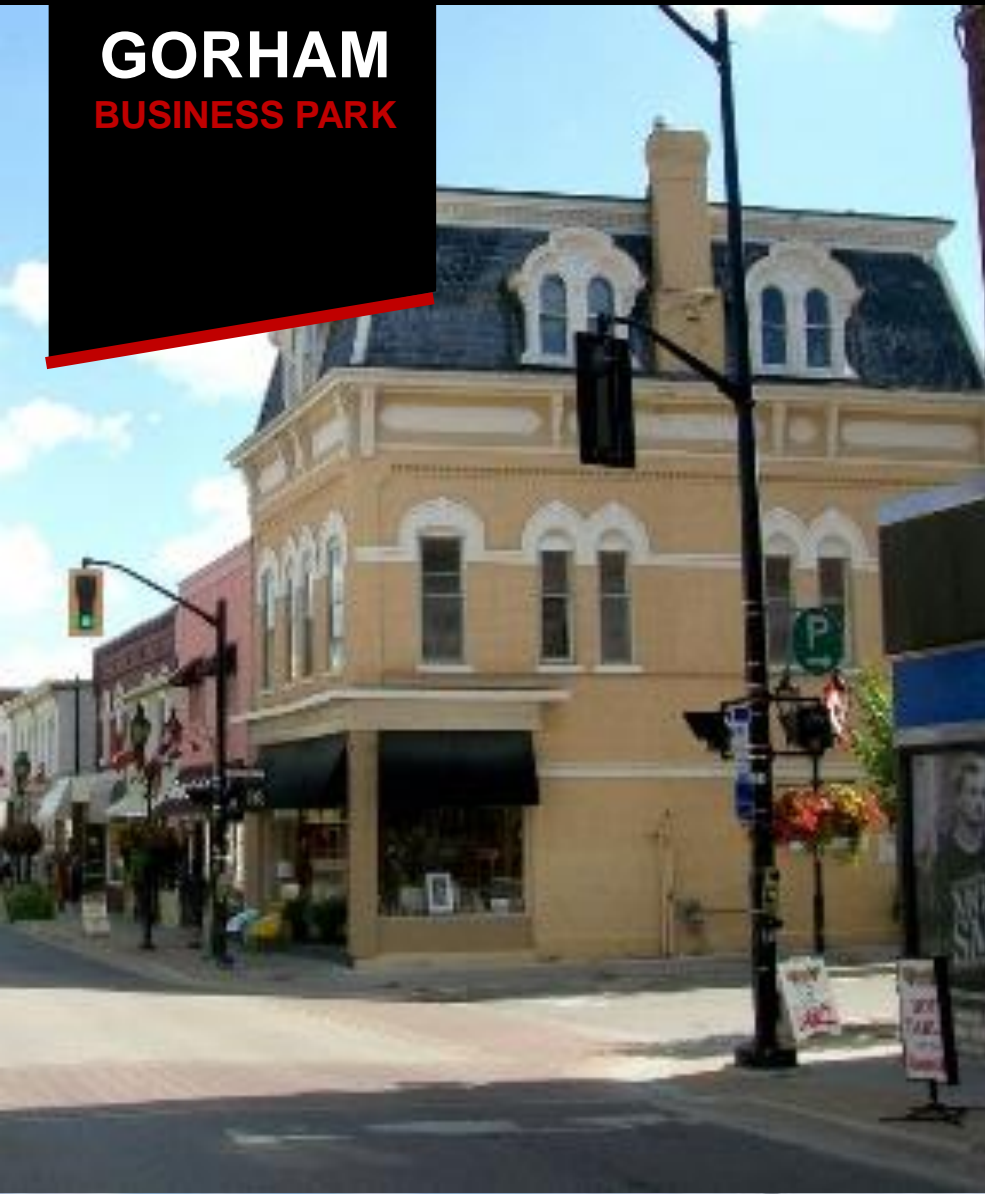
- 7 Esso/Tim Hortons
- 8 Starbucks
- 9 The Lion Pub & Grill
- 10 404 Town Shopping Centre

## FOR MORE INFORMATION:

Jonathon Gray\*\*  
+1 647 728 0461  
jonathon.gray@am.jll.com  
\*\*Sales Representative



# GORHAM BUSINESS PARK



## FOR MORE INFORMATION:

Jonathon Gray\*\*  
+1 647 728 0461  
jonathon.gray@am.jll.com  
\*\*Sales Representative

