



Flex space for lease

# Presidential Business Center

319 Business Lane  
Ashland, Virginia 23005

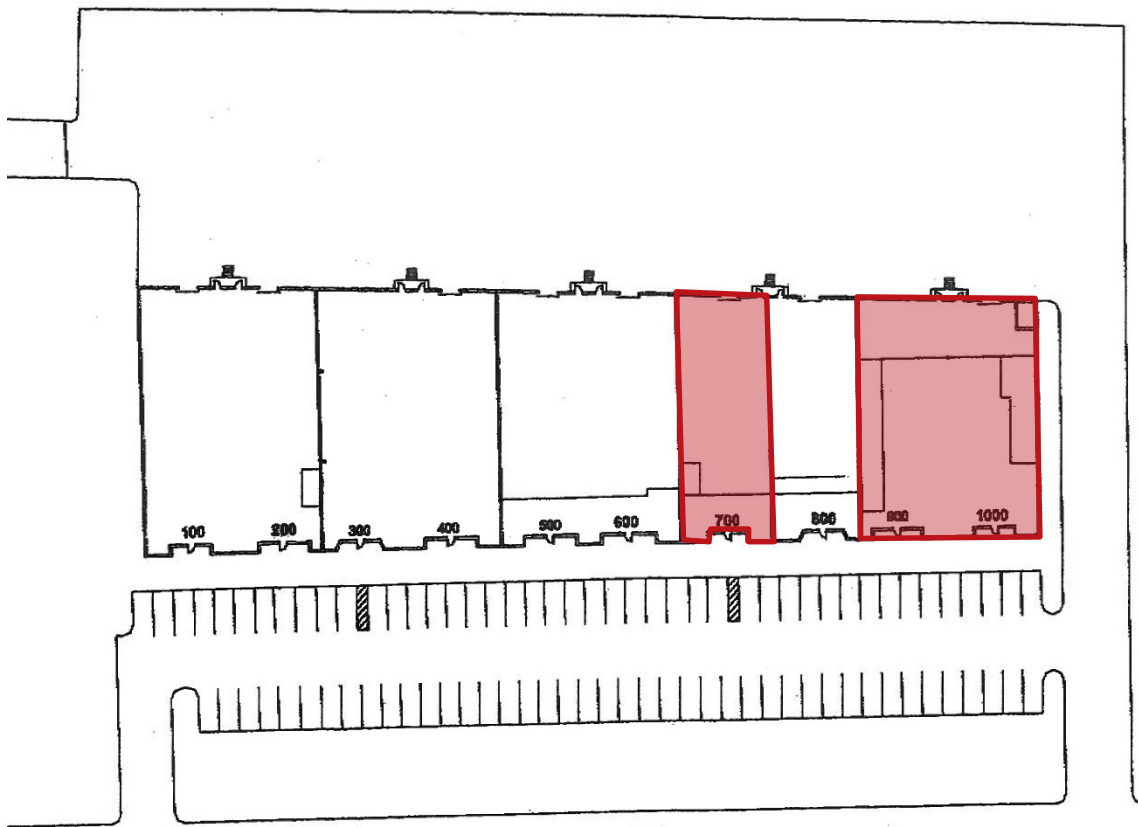
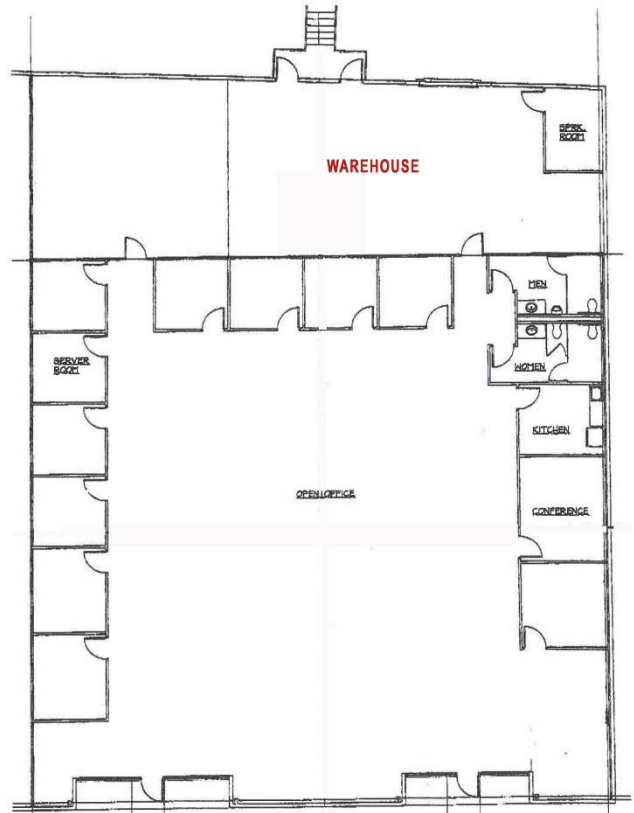


## Features

- 44,095 total building square feet
  - Suite 900-1000 (end cap) - 9,600 s.f. of office / warehouse
  - Suite 700 – 4,800 s.f. office / warehouse
- M-1, light industrial zoning
- Pre-cast concrete construction
- Large truck court
- Ample parking
- 20' clear height
- Close proximity to I- 95 and I-295
- 6" reinforced concrete slab
- Electrical: 3 Phase 480 Volt
- Sprinkler: Wet system
- Dock loading
- Exterior signage

### Suite 700, 900, and 1000

- Approximately 9,600 s.f.
- Office & warehouse space



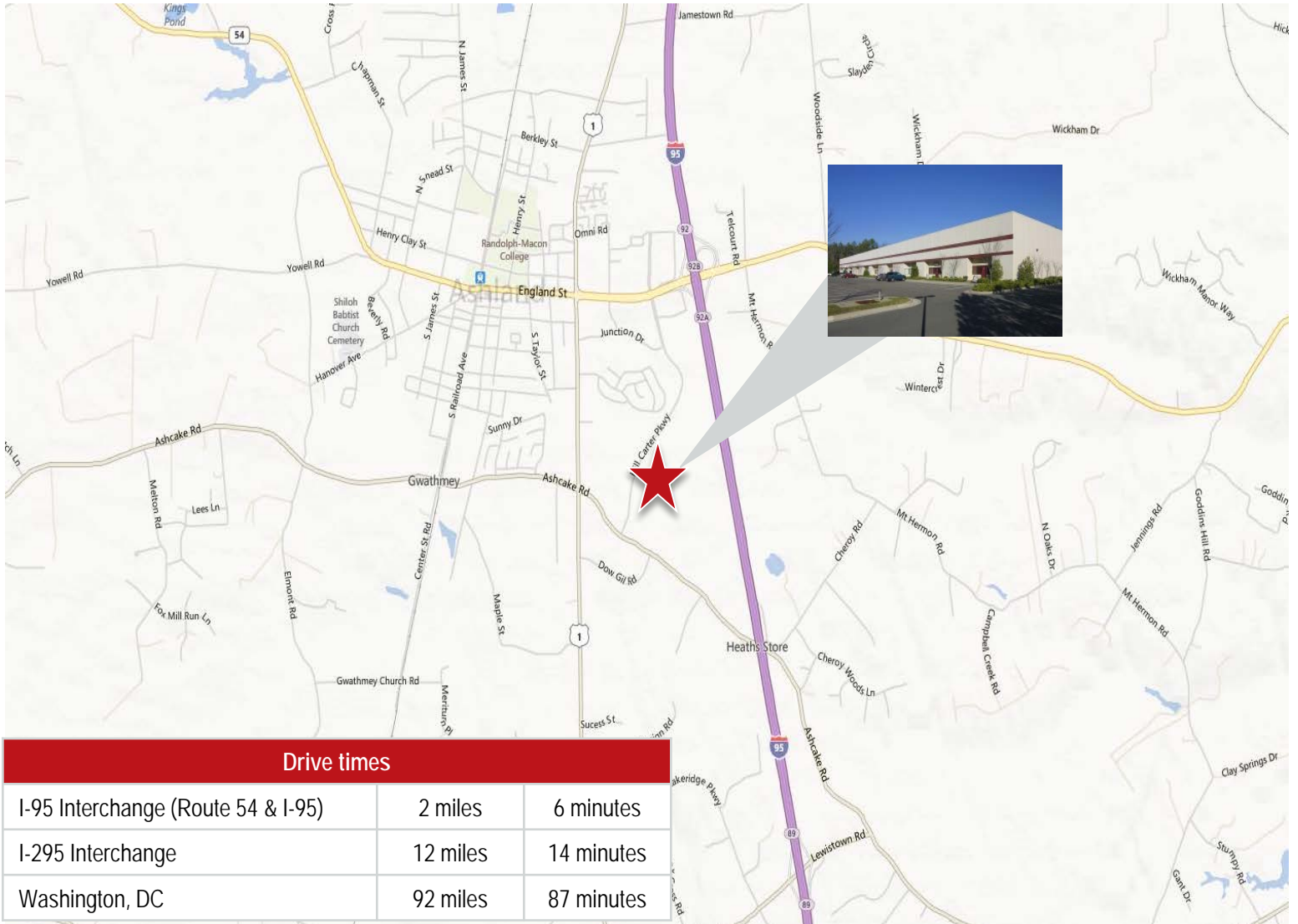
Front



Rear



## Map Overview



**Adam Lawson**  
 +1 804 200 6384  
[Adam.Lawson@am.jll.com](mailto:Adam.Lawson@am.jll.com)

**Gareth Jones**  
 +1 804 200 6453  
[GarethO.Jones@am.jll.com](mailto:GarethO.Jones@am.jll.com)



### DISCLAIMER

Although information has been obtained from sources deemed reliable, Owner, Jones Lang LaSalle, and/or their representatives, brokers or agents make no guarantees as to the accuracy of the information contained herein, and offer the Property without express or implied warranties of any kind. The Property may be withdrawn without notice. If the recipient of this information has signed a confidentiality agreement regarding this matter, this information is subject to the terms of that agreement. ©2014. Jones Lang LaSalle. All rights reserved.

[jll.com/richmond](http://jll.com/richmond)