

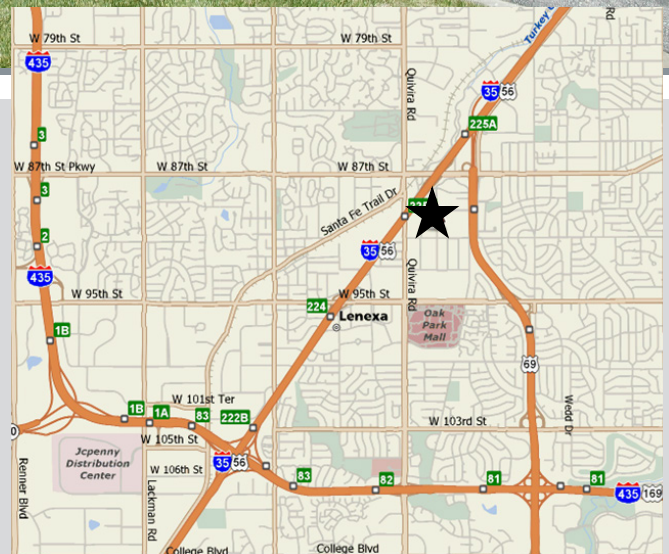


# Industrial property for lease

## Congleton Industrial Park

Building 2 - 11872 West 91st Street, Overland Park, Kansas

Up to 6,702 square feet available



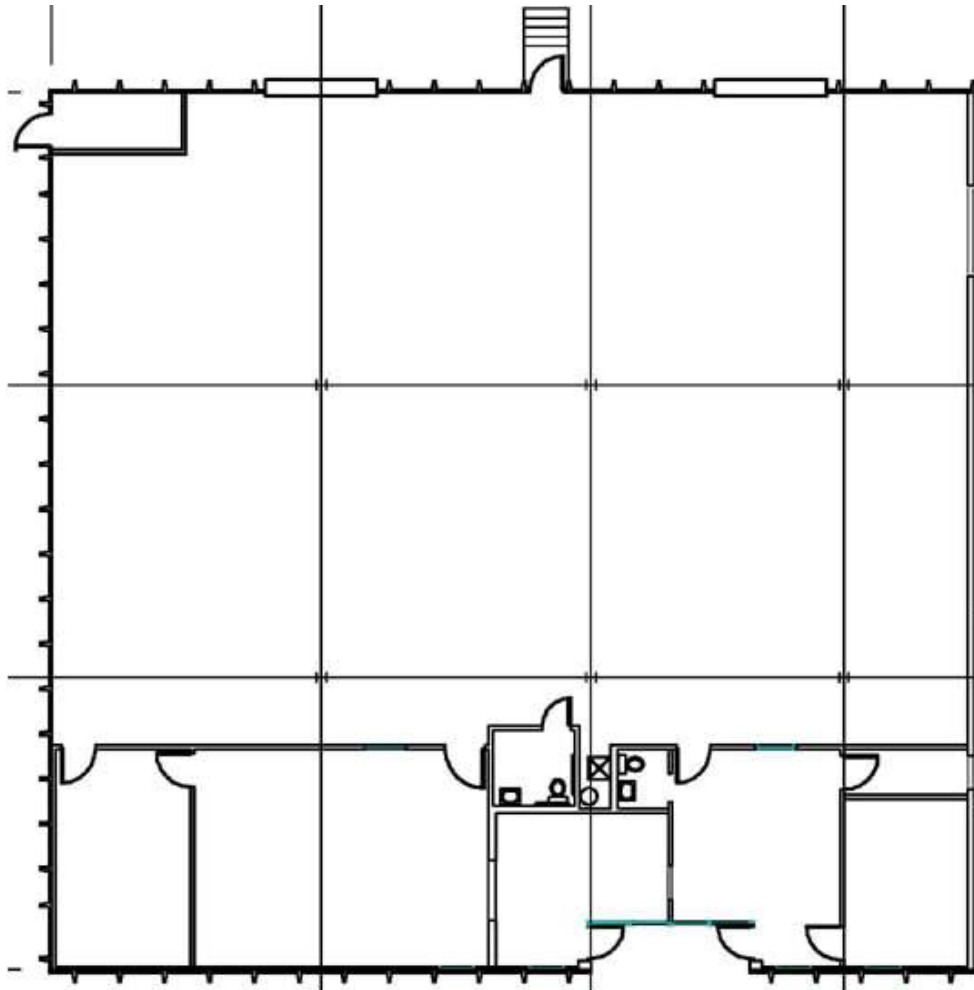
### Property highlights

- 2,000+/- square feet office
- 4,702+/- square feet warehouse
- Excellent office/warehouse location
- 14' clear height
- 1 dock high door
- 1 drive-in door
- \$7.50 per square foot gross industrial
- Excellent I-35 Highway access at 87th and 95th Streets
- Conveniently access to I-435 and 69 Highway at 87th Street
- Abundant services nearby

# Congleton Industrial Park

Building 2 - 11872 West 91st Street, Overland Park, Kansas

Up to 6,702 square feet available



Building 2

## Contact

**Kevin Wilkerson**  
+1 913 469 4601  
kevin.wilkerson@am.jll.com

**Phil Algrim, SIOR**  
+1 913 469 4605  
phil.algrim@am.jll.com

**Erik Lund**  
+1 913 469 4609  
erik.lund@am.jll.com