



**For Lease :**

# **36,720 SF Clear Span Multi-Purpose Facility**

5600 Old Sunrise Highway • Massapequa, NY



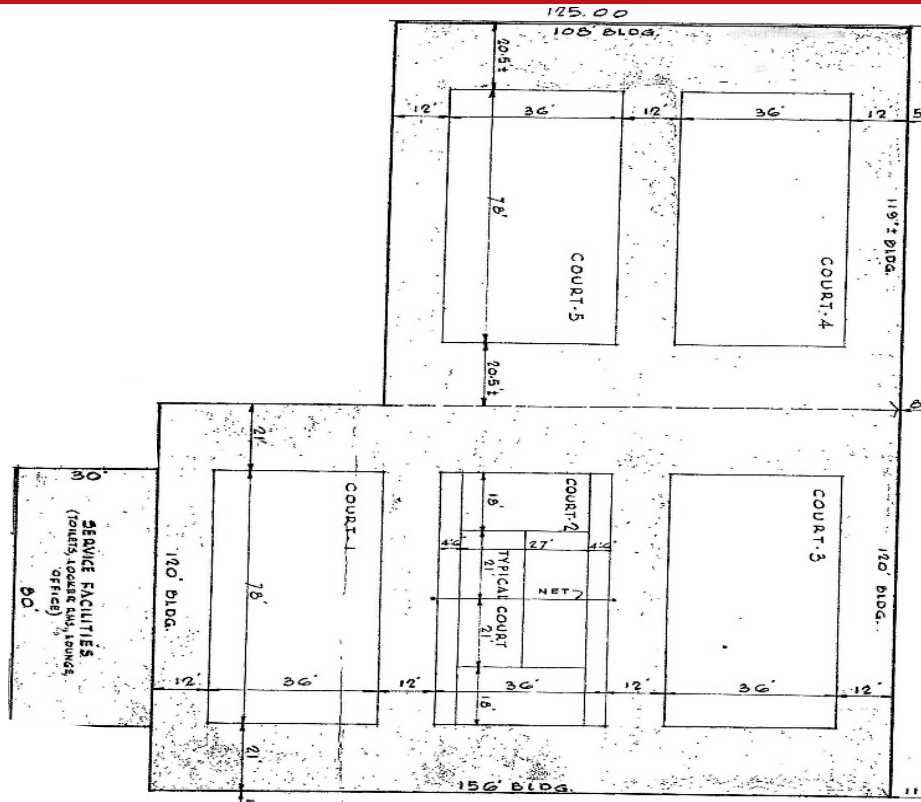
## **Building Specifications**

- Building Size:**
- 36,720 SF
    - 31,920 SF clear span
    - 4,800 SF: locker rooms, offices, reception & lounge
- Ceiling Height:**
- 15' to 35'
- Column Spacing:**
- Clear span
  - Ideal for indoor sports / church / multi-purpose / warehouse
- HVAC:**
- Fully air conditioned
- Location:**
- Adjacent to Town of Oyster Bay "Field Of Dreams) complex
  - Direct access to Sunrise Highway
  - Excellent visibility with 200' frontage
- Lease Price:**
- Negotiable



# 5600 Old Sunrise Highway, Massapequa, NY

## Floor Plan



## Map



For more information please contact:

Douglas A. Omstrom  
+1 631 962 2899  
doug.omstrom@am.jll.com

Jim McCahon  
+1 631 962 7376  
jim.mccahon@am.jll.com

