



# Romulus, Michigan

I-94/Middlebelt Road

For additional information and leasing opportunities:

**Sean Cavanaugh**  
Senior Associate

+1 248 581 3331

Sean.Cavanaugh@am.jll.com

**AJ Rich**  
Associate

+1 248 581 3326

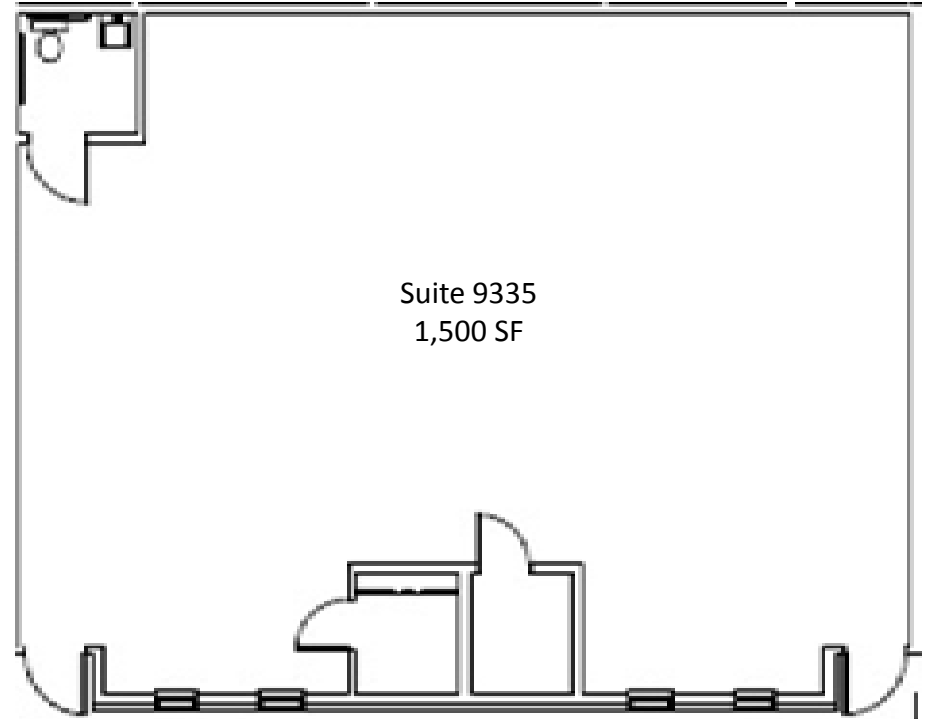
AJ.Rich@am.jll.com





## No other industrial property gets you this close to DTW

- Located directly off I-94 with quick and easy access to I-275, I-96 and downtown Detroit
- 16'-18' high ceilings
- 1/1,800 truck dock to square footage ratio
- Ample surface parking



### Building 23

Available SF:	1,500 SF
Ceiling Height:	12'
Number of Docks	N/A
Drive-in Doors:	N/A
Sprinklers:	Yes
Electrical:	200 amp, 208/120 volt
Bay Spacing:	N/A
Zoning:	C-2 /General Business

Although information has been obtained from sources deemed reliable, Owner, Jones Lang LaSalle, and/or their representatives, brokers or agents make no guarantees as to the accuracy of the information contained herein, and offer the Property without express or implied warranties of any kind. The Property may be withdrawn without notice. If the recipient of this information has signed a confidentiality agreement regarding this matter, this information is subject to the terms of that agreement. ©2016. Jones Lang LaSalle. All rights reserved.