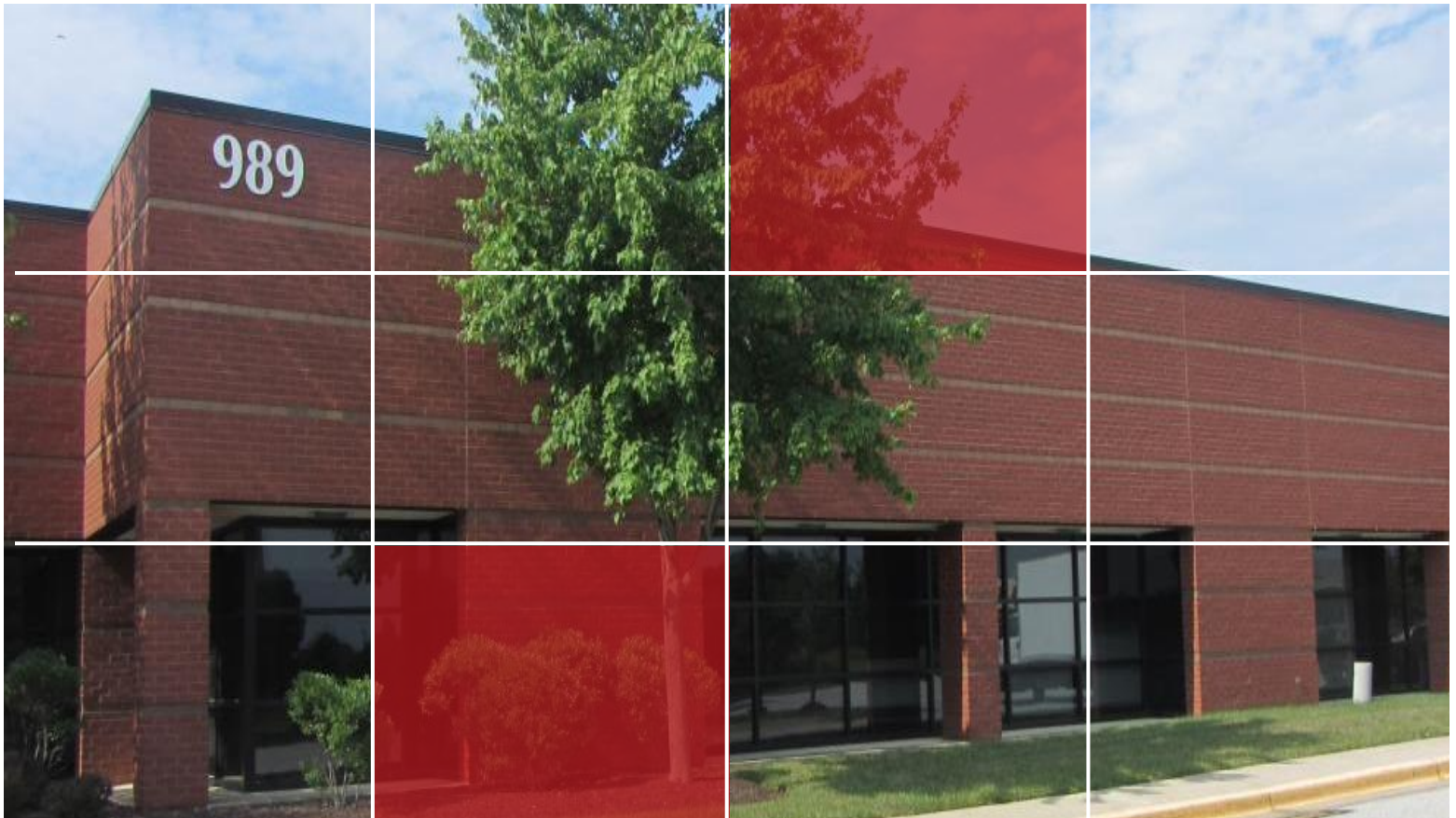


Office/Flex For Lease

5,311 – 41,303 sf



989-991 Corporate Boulevard

Linthicum, Maryland 21090

Space Highlights:

- 989 Corporate Boulevard – 41,303 sf
 - 5,311 sf (3,418 sf office space)
 - 17,460 sf (10,446 sf office space)
 - 18,532 sf (100% office)
- 991 Corporate Boulevard
 - 8,985 sf (100% office)

Building Highlights:

- Parking ratio of 4.1/1,000 SF
- Easy access to I-295, I-95 and I-695 and BWI Airport
- Dock & Drive-In
- Built in 1999

For more information, please contact:

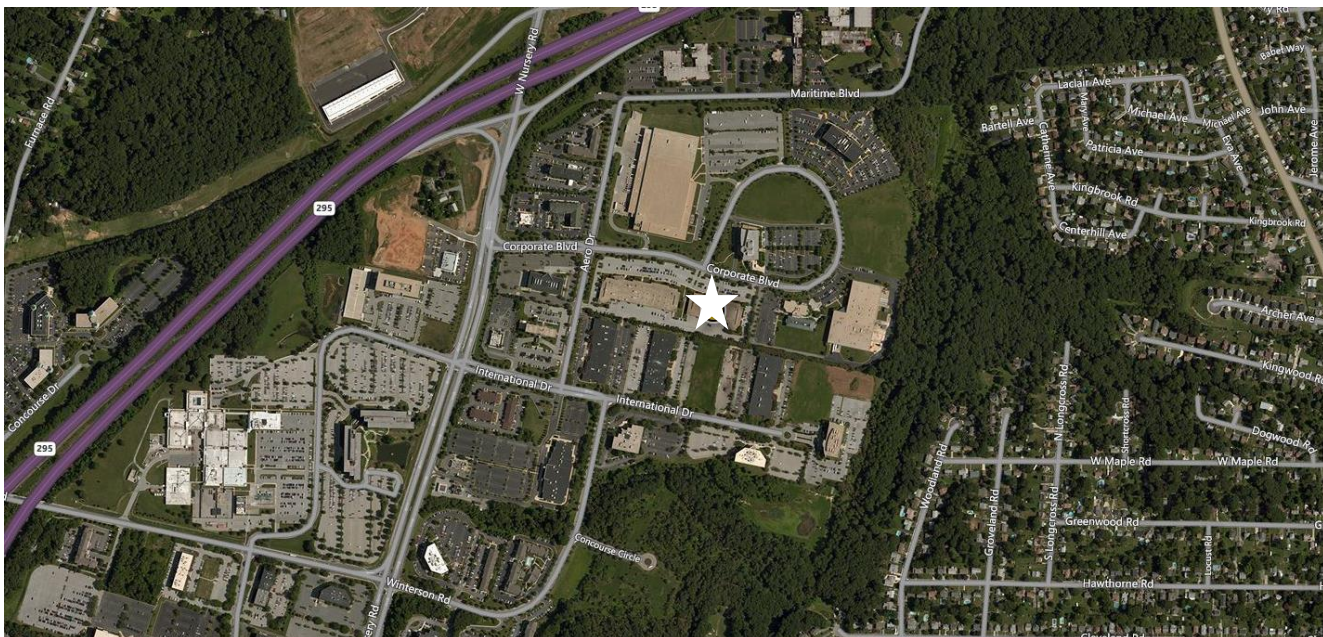
Tony Gross
Senior Vice President
+1 443 931 3333
tony.gross@am.jll.com

Terri Harrington
Senior Vice President
+1 443 931 3331
terri.harrington@am.jll.com

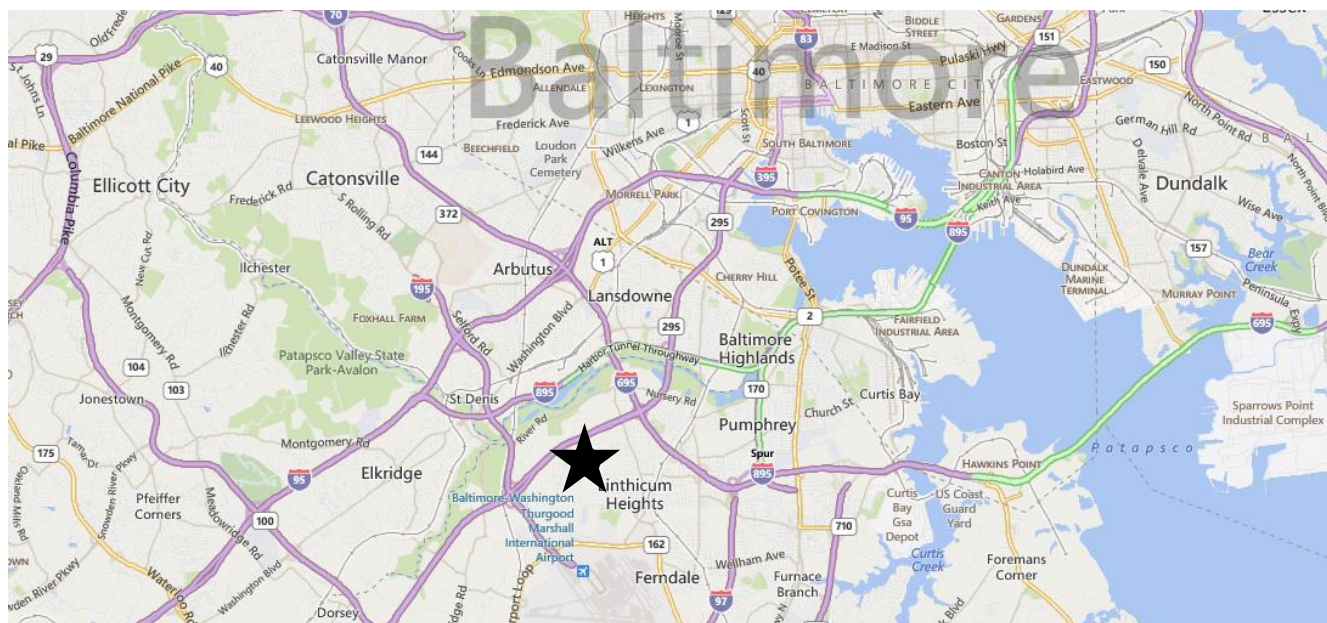
Peter Jackson
Associate
+1 443 931 3329
peterm.jackson@am.jll.com



Aerial



Regional map



989-991 Corporate Boulevard

For more information, please contact:

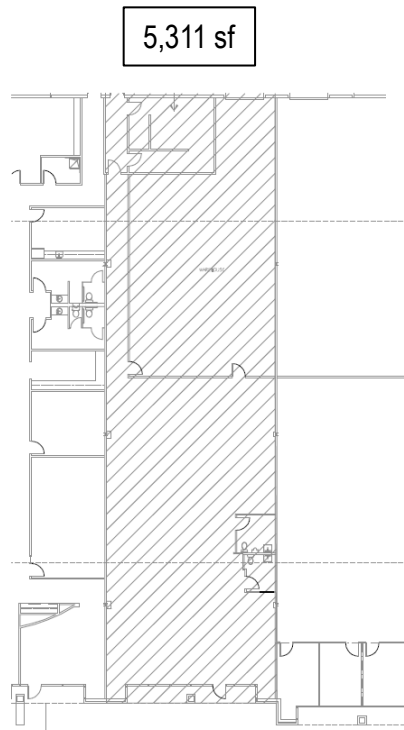
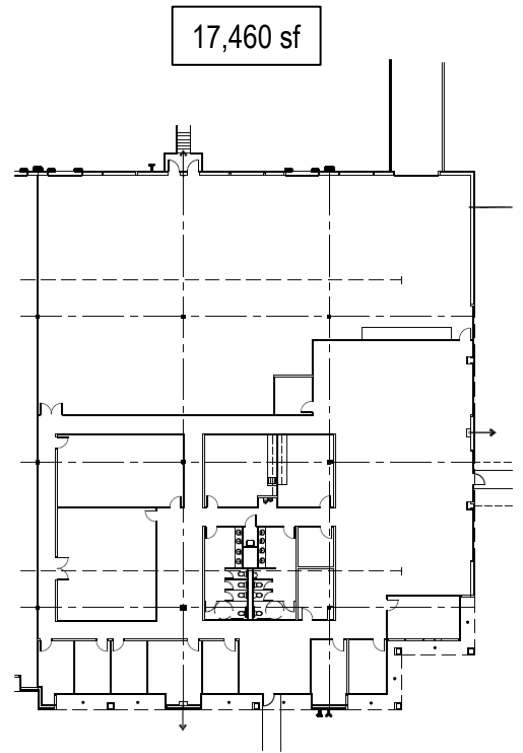
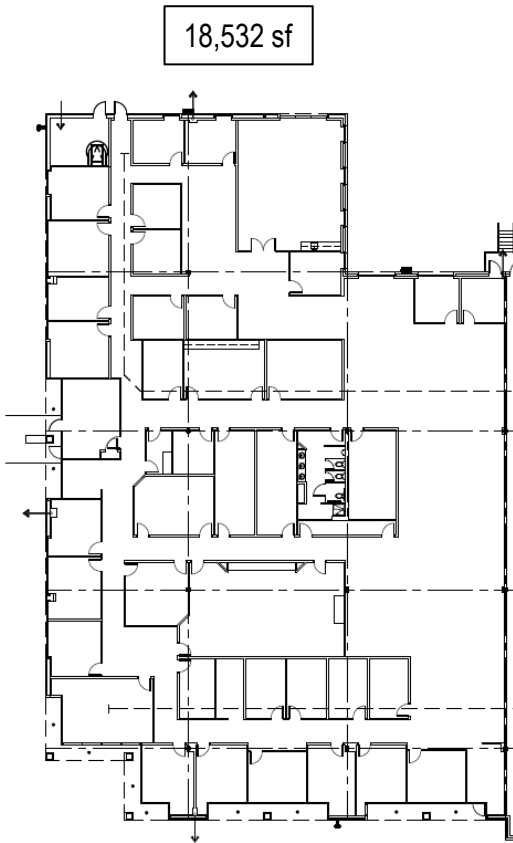
Tony Gross
Senior Vice President
+1 443 931 3333
tony.gross@am.jll.com

Terri Harrington
Senior Vice President
+1 443 931 3331
terri.harrington@am.jll.com

Peter Jackson
Associate
+1 443 931 3329
peterm.jackson@am.jll.com



989 Corporate Boulevard Floorplans



989-991 Corporate Boulevard

For more information, please contact:

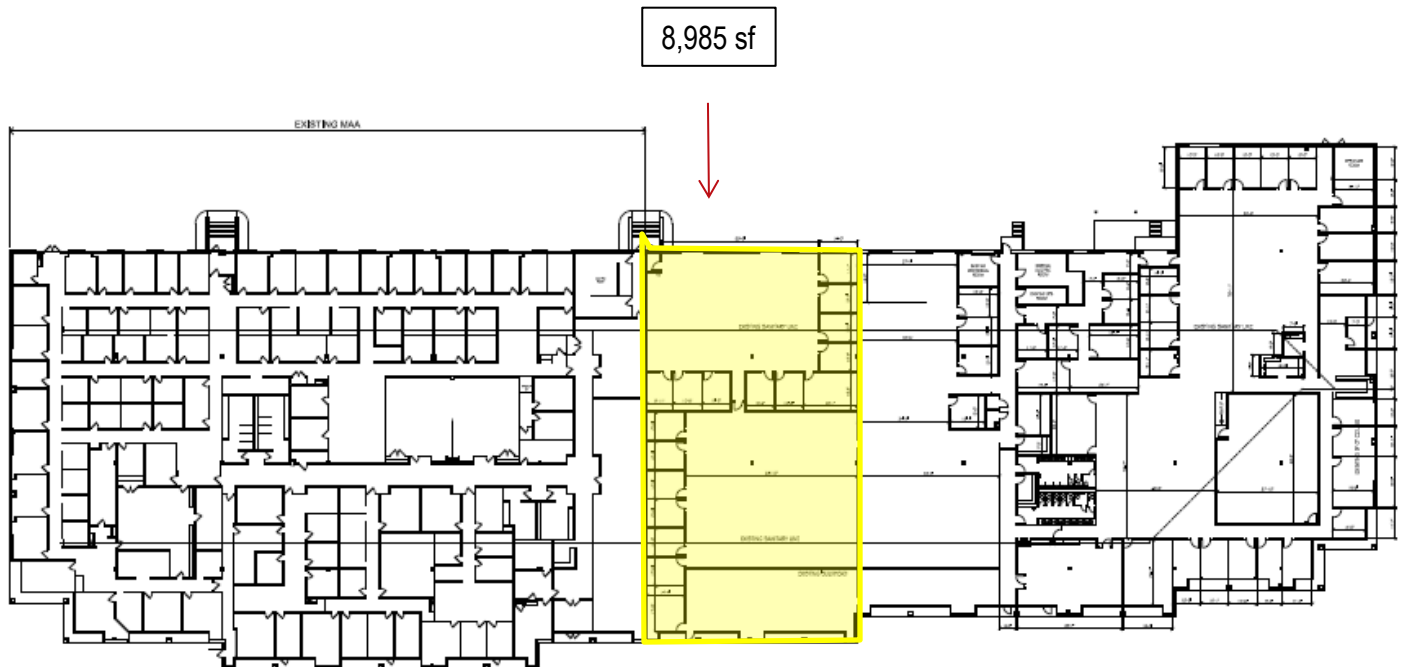
Tony Gross
Senior Vice President
+1 443 931 3333
tony.gross@am.jll.com

Terri Harrington
Senior Vice President
+1 443 931 3331
terri.harrington@am.jll.com

Peter Jackson
Associate
+1 443 931 3329
peterm.jackson@am.jll.com



991 Corporate Boulevard Floorplan



989-991 Corporate Boulevard

For more information, please contact:

Tony Gross
Senior Vice President
+1 443 931 3333
tony.gross@am.jll.com

Terri Harrington
Senior Vice President
+1 443 931 3331
terri.harrington@am.jll.com

Peter Jackson
Associate
+1 443 931 3329
peterm.jackson@am.jll.com

