



| | 1 Mile | 3 Miles | 5 Miles |
|--------------------------------|----------|----------|----------|
| Population | 9,034 | 108,742 | 219,427 |
| Households | 3,475 | 37,497 | 81,269 |
| Median Household Income | \$75,480 | \$46,780 | \$55,640 |

For Lease

100 Milk Street, Methuen MA

JLL is pleased to present 23,282 SF of office space available for lease on the second and third floor at 100 Milk Street in Methuen. Existing tenants include Fresenius Medical Care, Hassey Dental Associates, Hanger Clinic, Retina Consultants of Boston and Bay State Physical Therapy. 100 Milk Street is directly across from The Loop Methuen with over one million square feet of quality retail, fine and casual dining, banks, childcare, a health club, and movie theatre. Ten miles from the New Hampshire border, it's pivotal location draws from the region's highly skilled workplace.

Building specifications

Building size: 45,000 SF

Stories: 3

Year built: 1985

Space available: 3rd Floor: 15,000 SF
2nd Floor: 8,282 SF

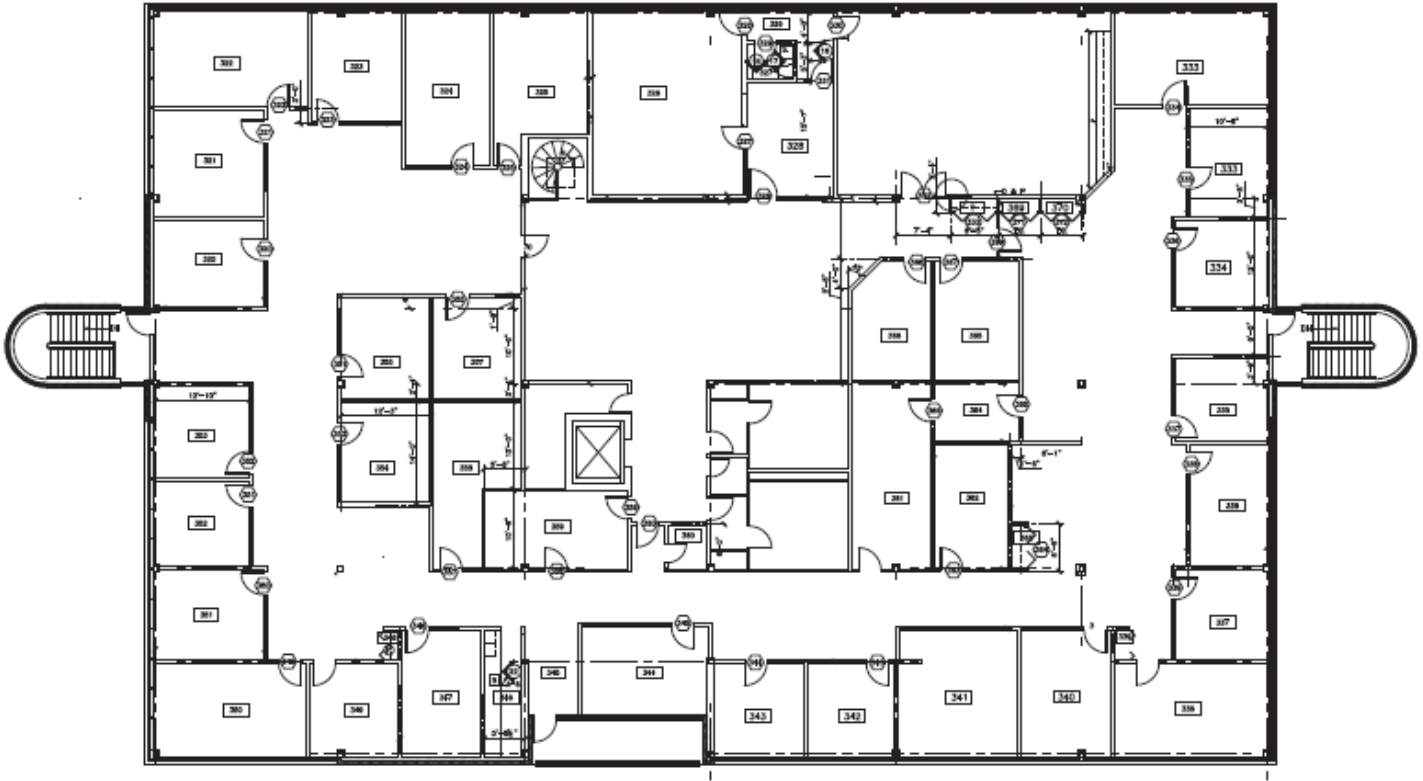
Parking: 3.89/1,000 SF

Land area: 3.12 acres



For Lease

Third floor – 15,000 SF



Peter Richardson
+1 617 531 4173
Peter.Richardson@am.jll.com

