

Frost Warehouse 1

9043-9083 Frost Avenue | Berkeley, MO 63134
(St. Louis Metro)



Property Highlights

Frost Warehouse 1 is a 143,429 SF bulk warehouse facility offering quality warehousing at market beating rates. Centrally located in the North County sub-market, Frost Warehouse 1 delivers outstanding access to the St. Louis Metro via Interstates 70, 170 & 270.

- » ±143,429 SF available
- » Divisible to ±38,090 SF
- » 200' deep, front loaded design
- » 20' minimum clear height
- » 25 dock doors
- » 1 drive-in door
- » T5 high efficiency lighting
- » Trailer parking possible
- » Outdoor storage possible
- » Lease rate: \$3.25/SF, NNN



< 1mi
to I-170



1.5mi
to I-270



2.5mi
to I-70



7.5mi
to FedEx Ground

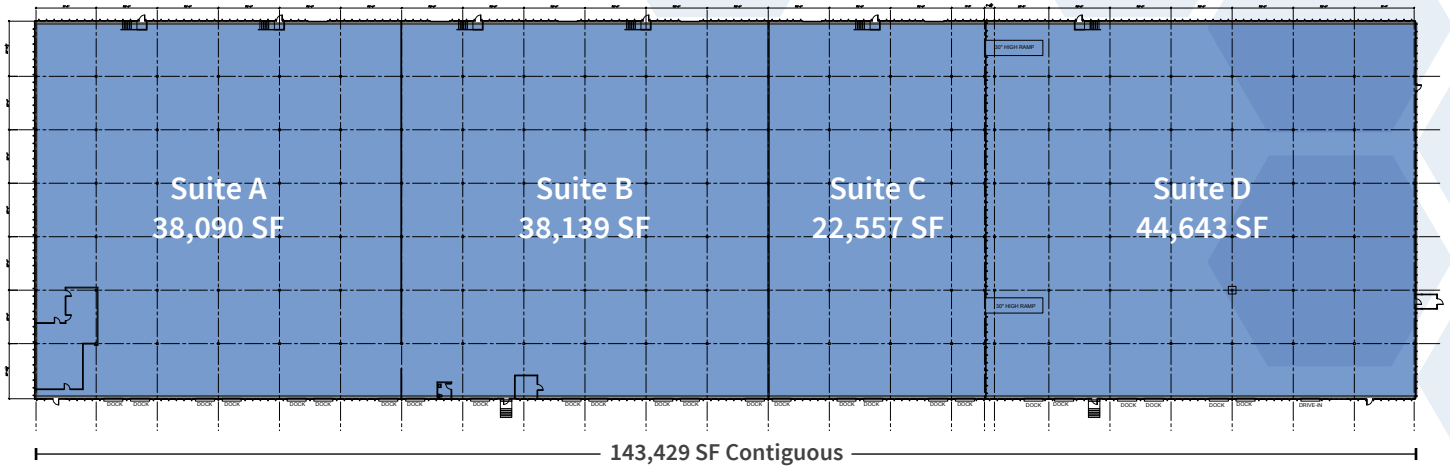
For more information, please contact:

David Branding, SIOR
+1 314 338 2084
david.branding@am.jll.com

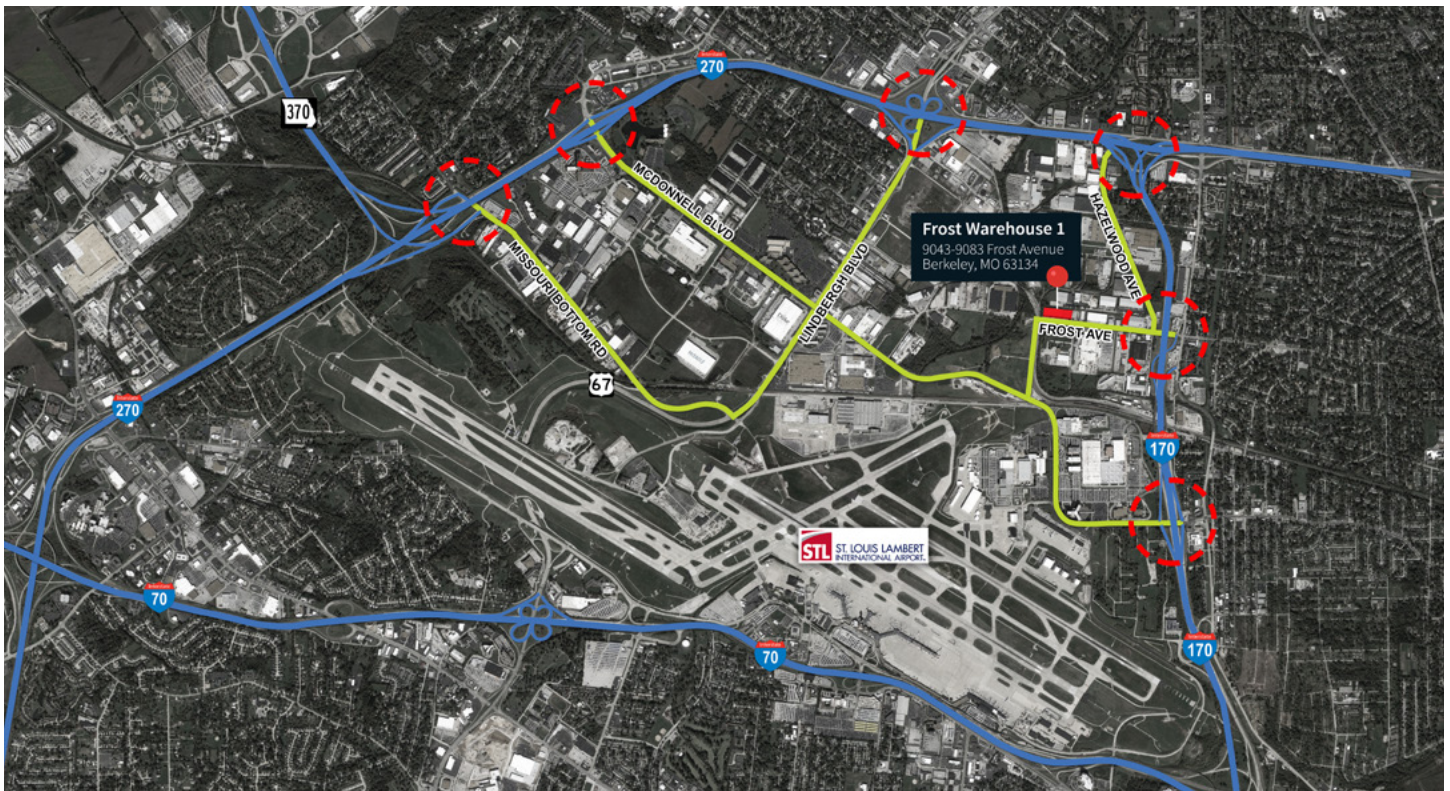
Jones Lang LaSalle Americas, Inc., a licensed real estate broker



Floor Plan



Interstate Access



David Branding, SIOR
+1 314 338 2084
david.branding@am.jll.com

jll.com/st-louis
+1 314 338 2080

DISCLAIMER
© 2018 Jones Lang LaSalle IP, Inc. All rights reserved. All information contained herein is from sources deemed reliable; however, no representation or warranty is made to the accuracy thereof.

