



For Lease

90 Libbey Industrial Parkway, Weymouth

Class A Office/Medical Space

JLL is pleased to present: **10,900 s.f. of Class A space available for lease at 90 Libbey Industrial Parkway in Weymouth.** Libbey Business Center is positioned to provide tenants and medical users with attractive cost efficient office space. The building is located less than one mile off of Route 3 via Exit 16, which provides commuters from north and south with quick reliable access.

Building Highlights:

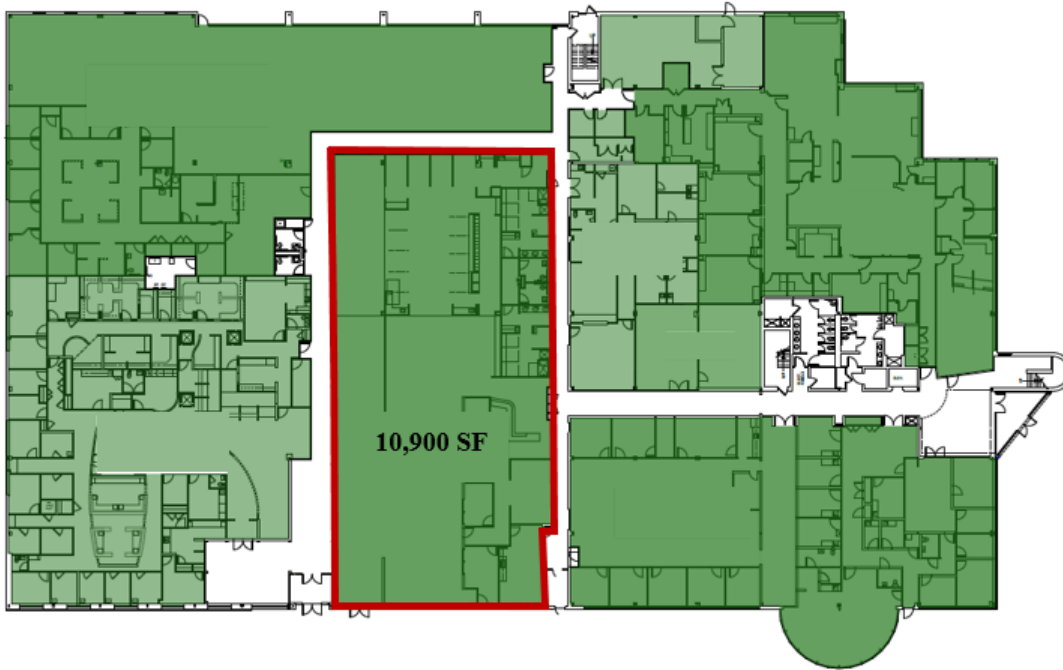
Building size:	86,926 SF
Year built:	1988
Availability:	1 st floor: 10,900 SF
Parking:	3.40/1,000 SF



For Lease



1st Floor:



For more information contact:

Tom Kent
+1 617 531 4224
Tom.Kent@am.jll.com

Sean Lynch
+1 617 316 6488
Sean.Lynch@am.jll.com

Mike Keenan
+1 617 316 6424
Michael.Keenan@am.jll.com