

5183 SH 360
NE QUADRANT OF HWY 360 & KINGSWOOD BLVD
12 Acres fronting Highway 360
Grand Prairie, Texas 76018



Property Description

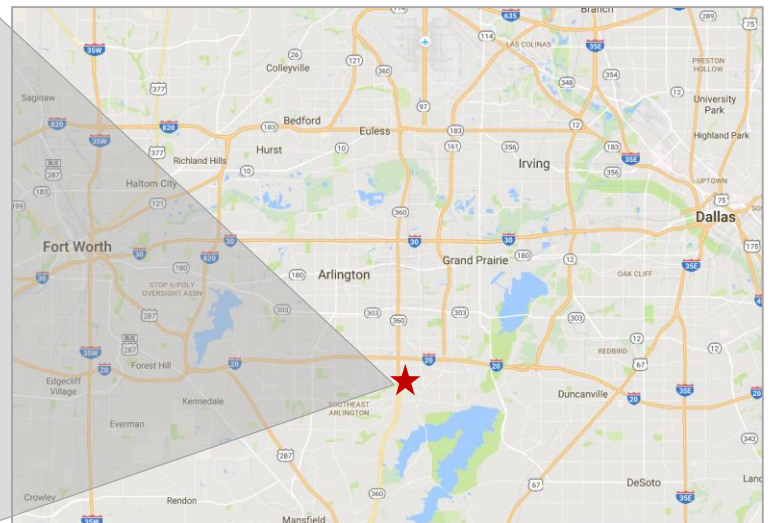
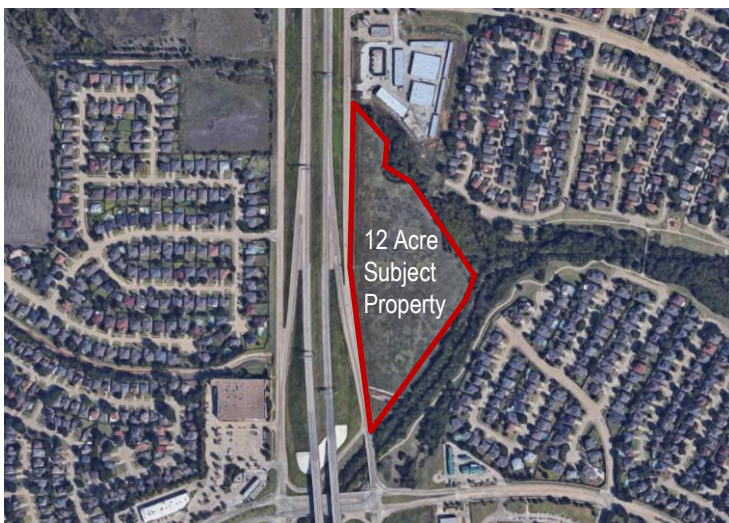
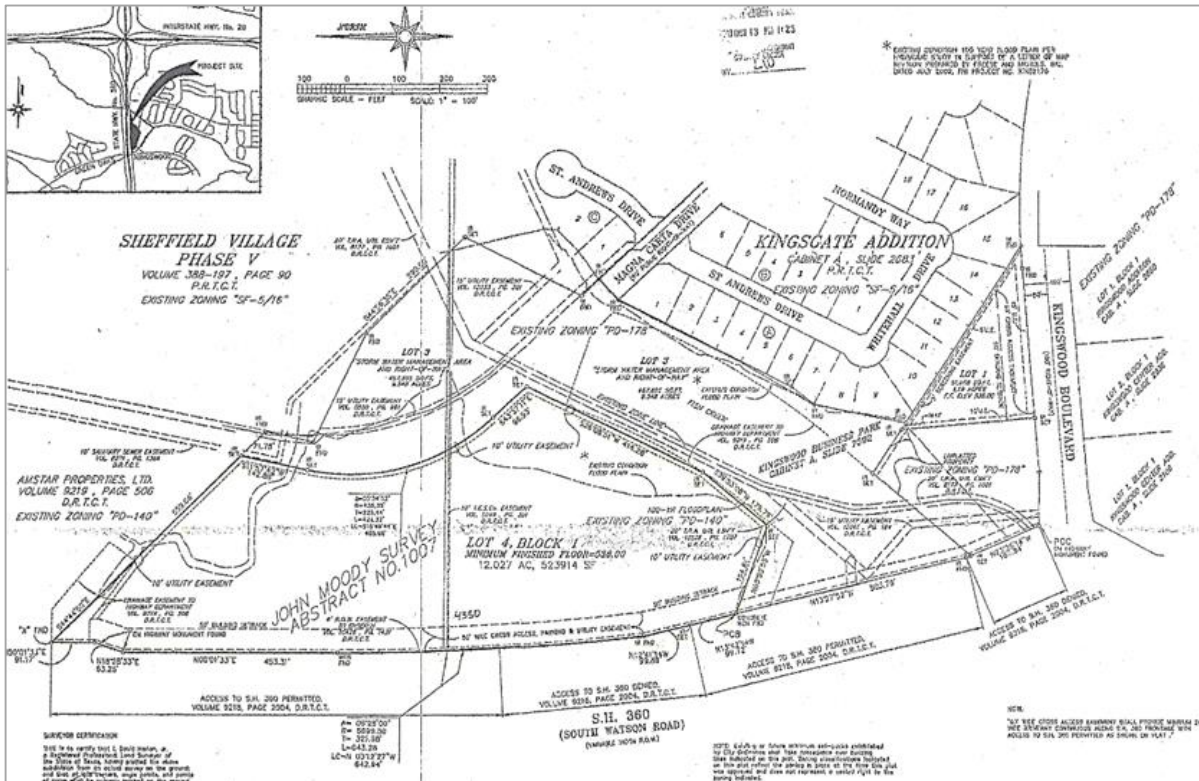
- \$5.00/SF or \$2,613,600
- 12 Acres fronting HWY 360
- 1,800 feet of highway frontage
- Utilities to site
- Zoned PD 140
 - Commercial
 - Office
 - Single & Multi Family

For additional information contact:

Pat McDowell
+1 817 334 8106
Pat.mcdowell@am.jll.com



5183 SH 360
 NE QUADRANT OF HWY 360 & KINGSWOOD BLVD
 12 Acres fronting Highway 360
 Grand Prairie, Texas 76018



For additional information contact:

Pat McDowell
 +1 817 334 8106
Pat.mcdowell@am.jll.com

