



For sublease

Arboretum III

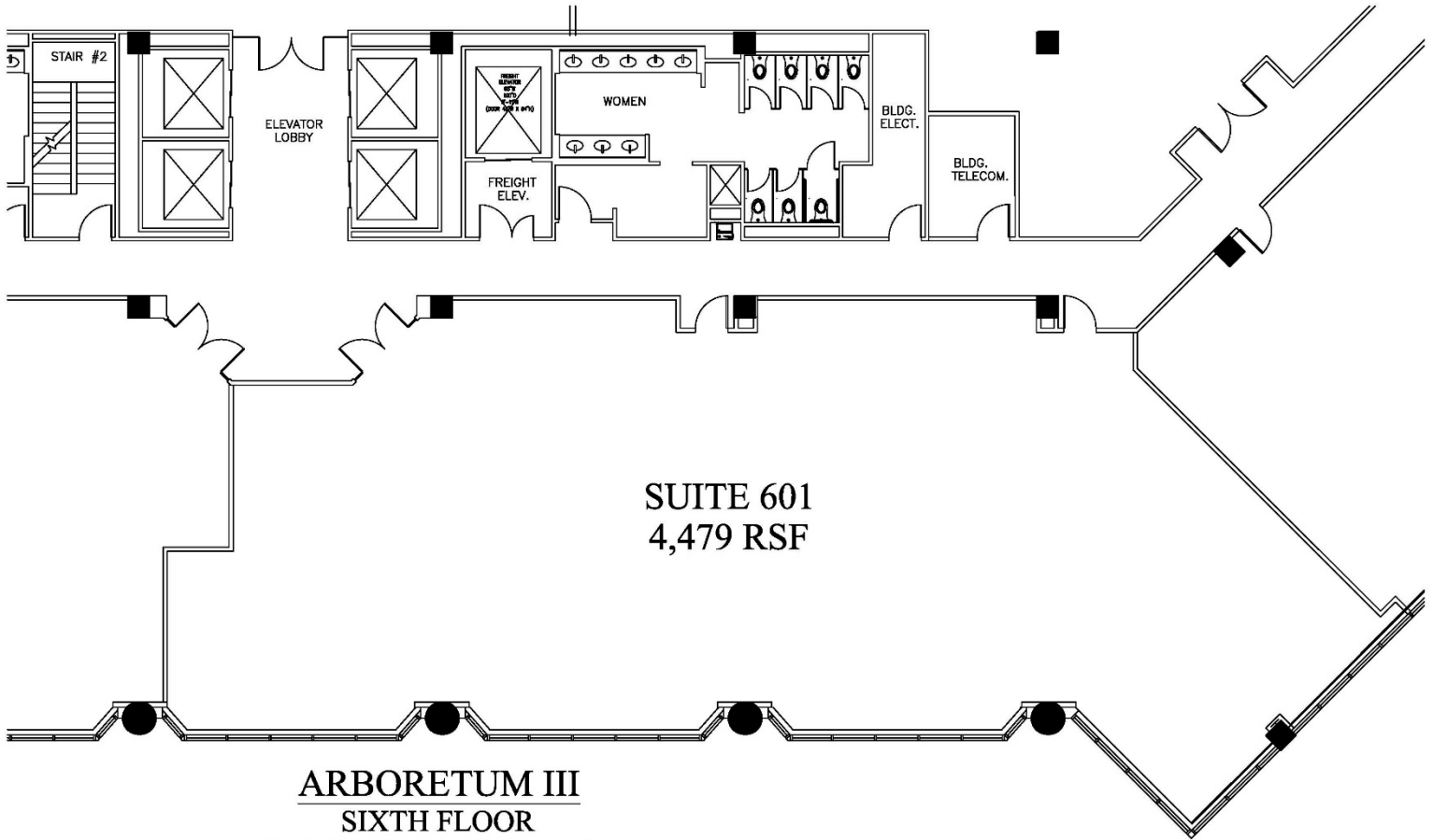
300 Arboretum Place
Richmond, VA 23236



Features

- Approximately 4,479 s.f. available now for sublease
- Term through 9/30/2021
- \$17.75 per s.f. plus rent abatement
- \$20.00 per s.f. tenant improvement allowance
- To be built to subtenant's specifications
- Located on top floor of Arboretum III with lobby exposure
- Back-up generator access
- On-site amenities include café, fitness center, conference spaces, and walking trails
- Convenient highway access

Floor Plan
6th Floor



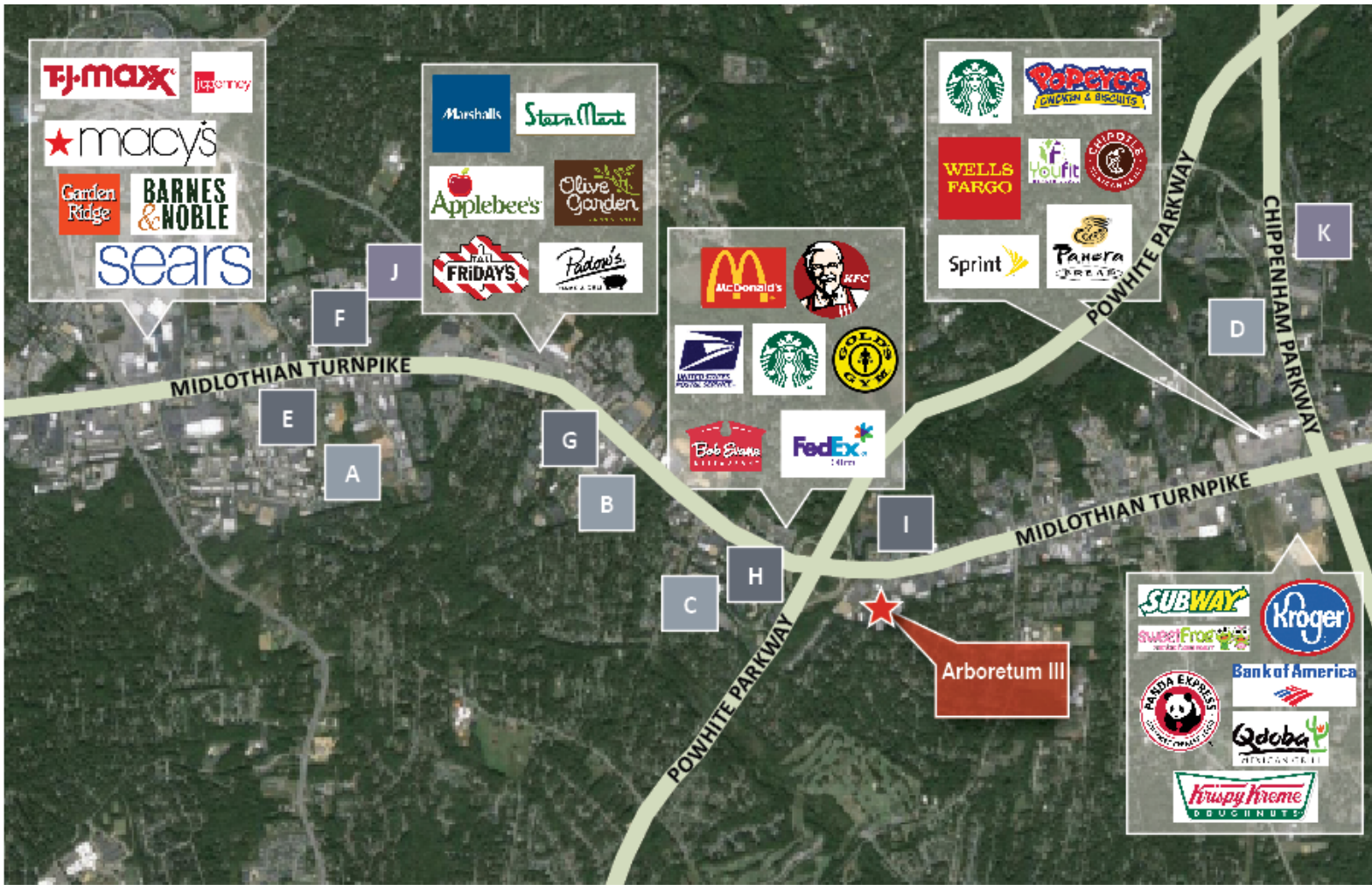
SUITE 601
4,479 RSF

ARBORETUM III
SIXTH FLOOR
300 ARBORETUM PLACE
RICHMOND, VA 23236

DISCLAIMER

Although information has been obtained from sources deemed reliable, Owner, Jones Lang LaSalle, and/or their representatives, brokers or agents make no guarantees as to the accuracy of the information contained herein, and offer the Property without express or implied warranties of any kind. The Property may be withdrawn without notice. If the recipient of this information has signed a confidentiality agreement regarding this matter, this information is subject to the terms of that agreement. ©2014. Jones Lang LaSalle. All rights reserved.

Amenities



Office parks:

A	Southpark
B	Moorefield
C	Arboretum
D	Boulders

Hotels:

E	Hampton Inn
F	Doubletree
G	Four Points by Sheraton
H	Hyatt Place
I	Holiday Inn Express

Hospitals:

J	Johnston Willis Hospital
K	Chippenham Hospital

Gareth Jones
 +1 804 200 6453
 GarethO.Jones@am.jll.com

Adam T. Lawson
 +1 804 200 6384
 Adam.Lawson@am.jll.com



DISCLAIMER

Although information has been obtained from sources deemed reliable, Owner, Jones Lang LaSalle, and/or their representatives, brokers or agents make no guarantees as to the accuracy of the information contained herein, and offer the Property without express or implied warranties of any kind. The Property may be withdrawn without notice. If the recipient of this information has signed a confidentiality agreement regarding this matter, this information is subject to the terms of that agreement. ©2014. Jones Lang LaSalle. All rights reserved.