

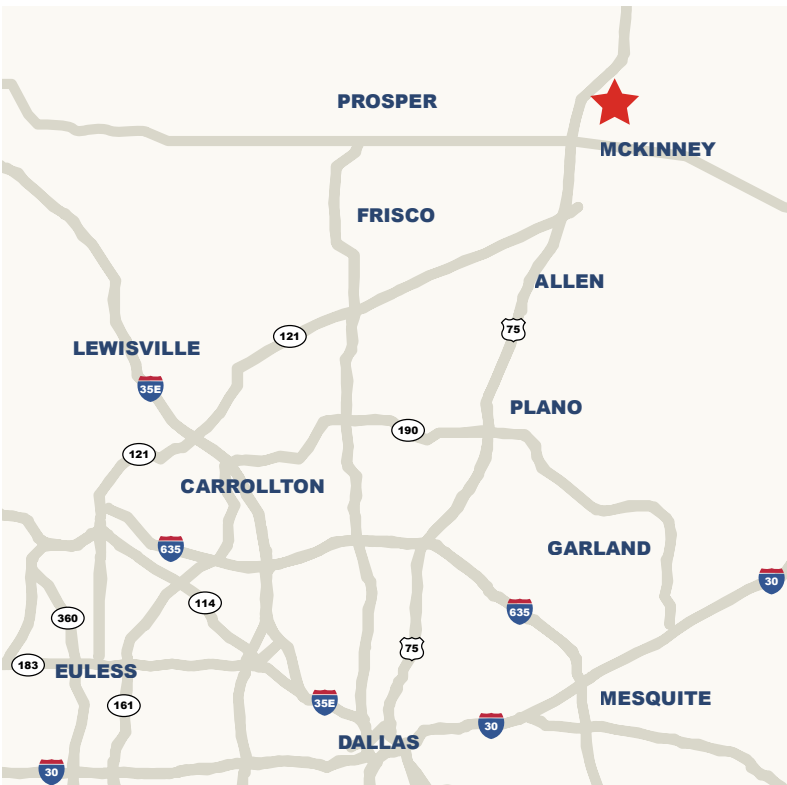


*Available:
161,273 SF
Corporate
Headquarters*

Texas Crossing

3000 North Redbud Boulevard • McKinney, Texas 75069

Approximately 161,273 SF, two-story corporate headquarter office space, featuring private offices, conference room, data processing room, carpet and tile flooring, acoustical tile ceiling, fluorescent lighting.



The Property	
Office	123,695 SF
Office / Data Center	37,578 SF
Warehouse - Leased	493,000 SF





Dimensions

Office: (2 story) 363' x 196'
 Data center: 180' x 210'
 Distribution center: 600' x 1180'

Additional land

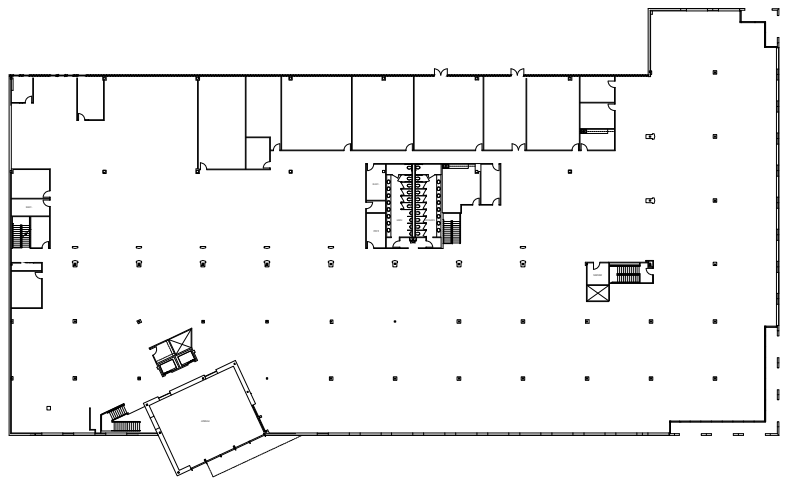
14 acres available on the east side of the property
 69.62 acres available on the north side of the property

Year built

1997

Parking

5/1,000 ratio that is expandable up to 8/1,000. Paved and lighted parking spaces for approximately 940 cars.



Blake Shipley
 Vice President
 +1 214 438 6118
 blake.shipley@am.jll.com

Ahnie Gampper
 Associate
 +1 214 438 6376
 ahnie.gampper@am.jll.com

