



# For Lease

## Industrial flex space for lease

- Building 17406: Suite 300
  - 4,000 s.f. available 3/1/2019
- Building 17408: Suite 300-400
  - 4,000 s.f. available
- 18' clear height
- Ample parking
- Nearby amenities
- Close proximity to US 31 from SR 32

**17406-08 Tiller Court,  
Westfield IN 46074**

**Matt Dickerson, SIOR, CCIM**

+1 317 810 7041

[matt.dickerson@am.jll.com](mailto:matt.dickerson@am.jll.com)

**Chip Barnes, SIOR**

+1 317 810 7045

[chip.barnes@am.jll.com](mailto:chip.barnes@am.jll.com)

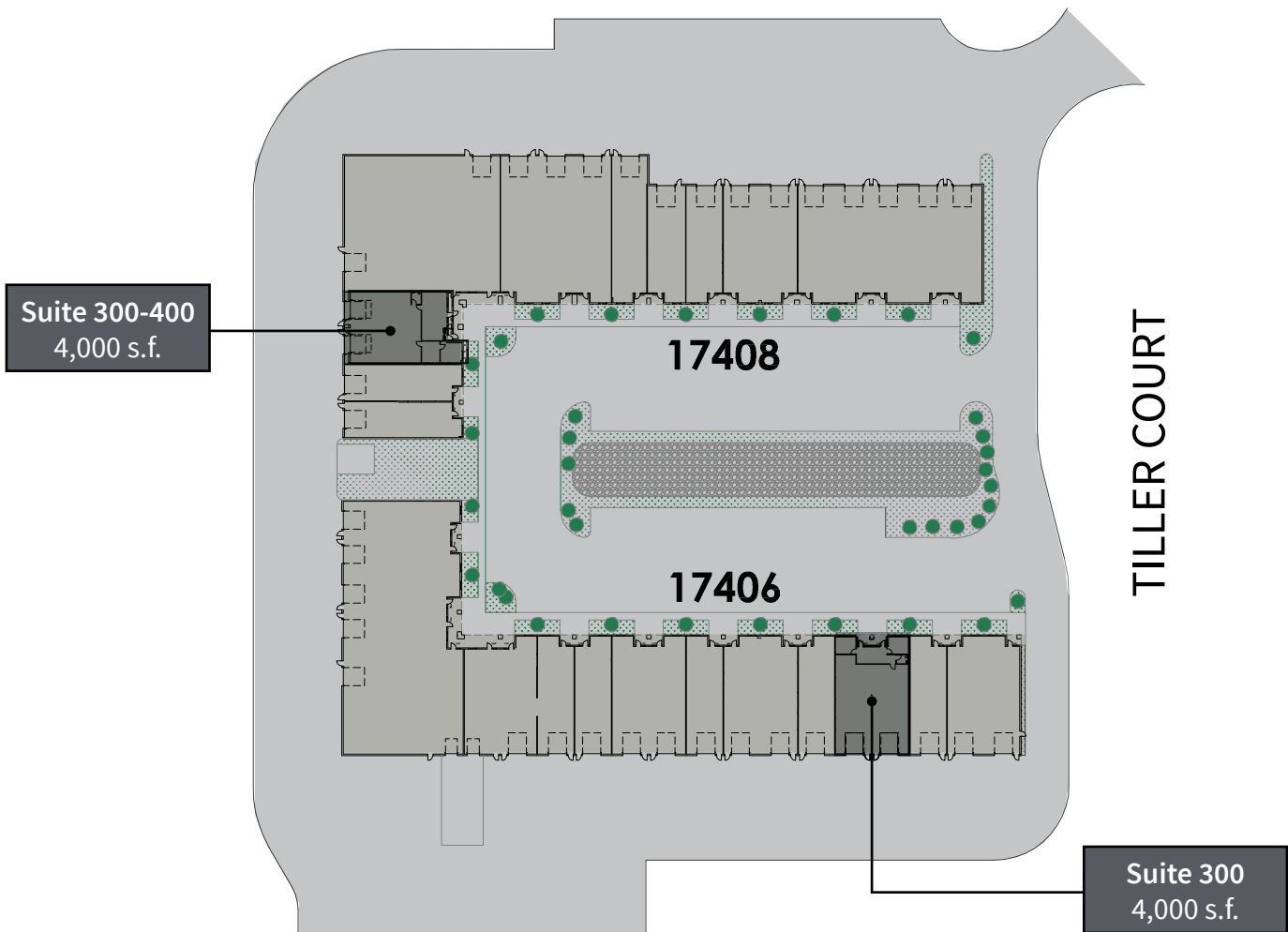
[jll.com/indianapolis](http://jll.com/indianapolis)



## Availability

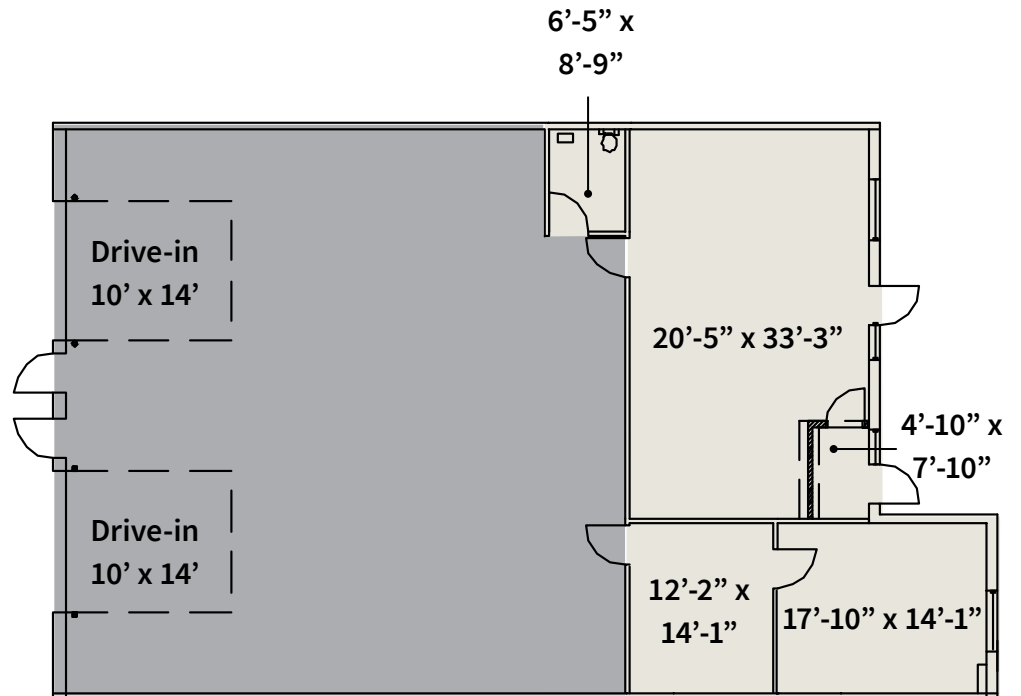


## Site plan



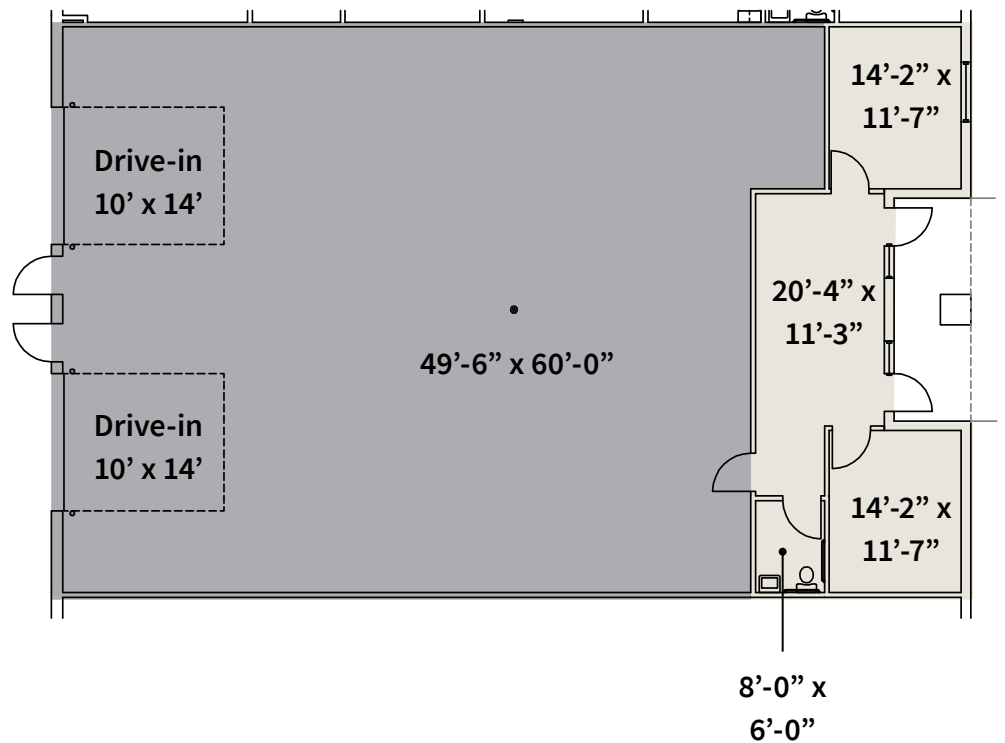
## 17408 Tiller Court Suite 300-400

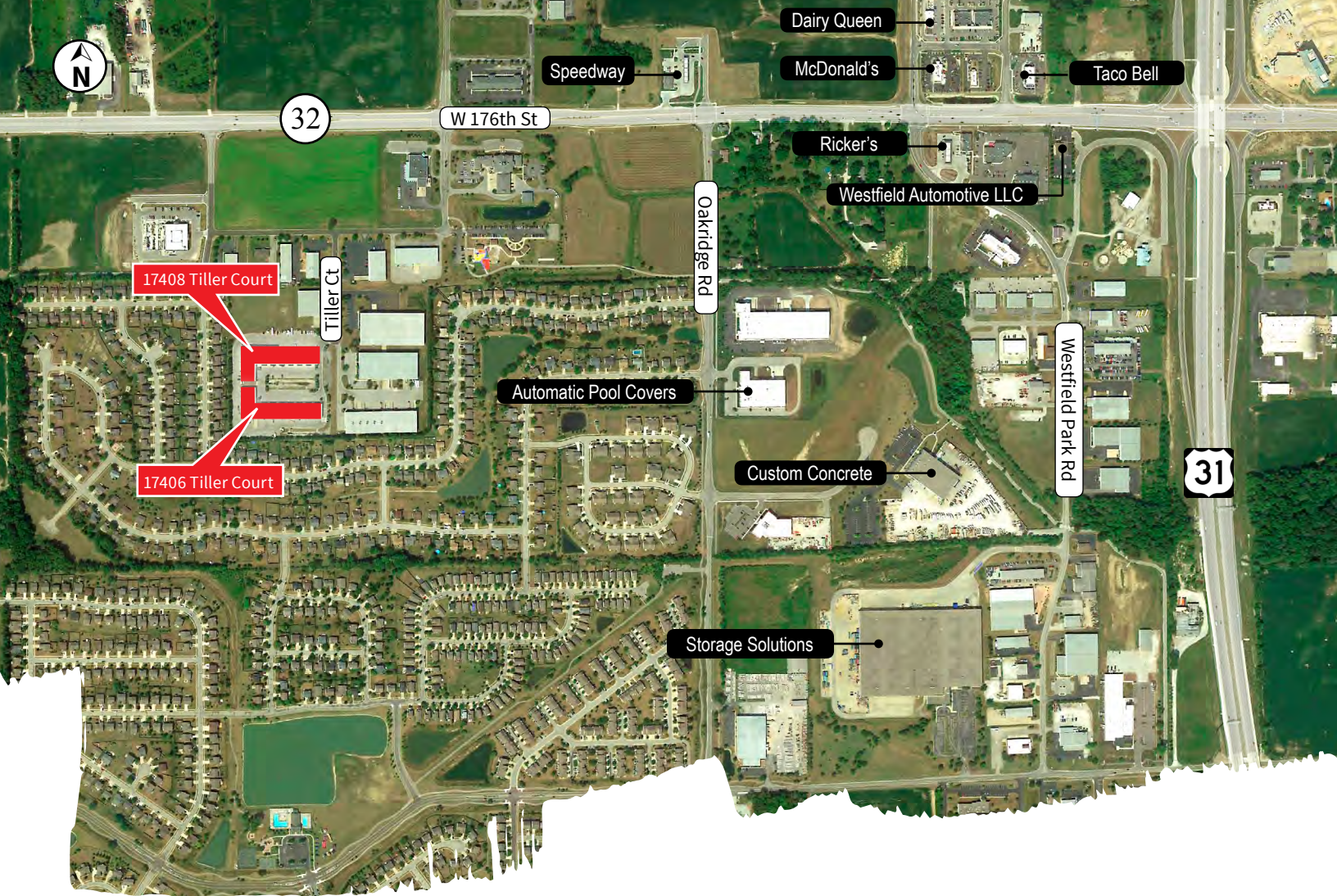
- 4,000 s.f. available
- 1,728 s.f. office
- (2) 10' x 14' drive-ins
- 18' clear height



## 17406 Tiller Court Suite 300

- 4,000 s.f. available
- 1,030 s.f. office
- (2) 10' x 14' drive-ins
- 18' clear height
- Available 3/1/19

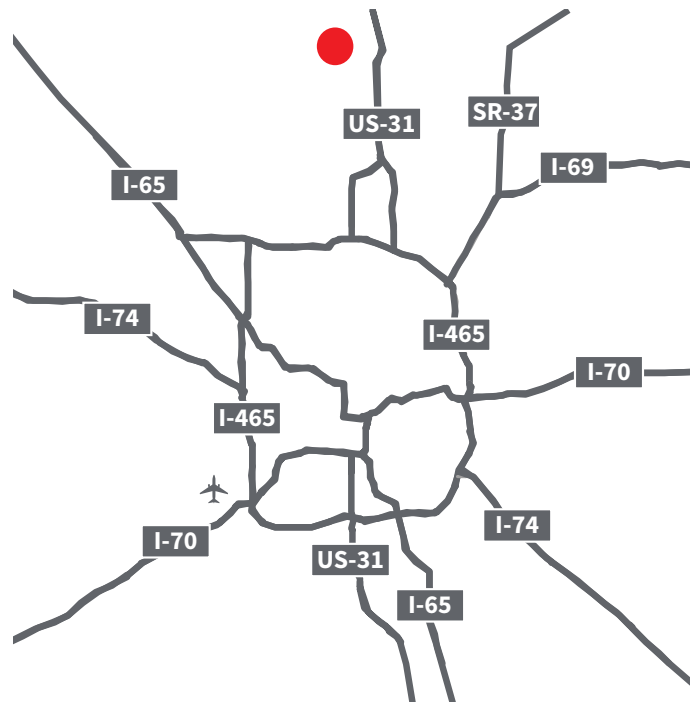




## Location

The Westfield stretch of US 31 is now three lanes in each direction between 146th Street and SR 32 and two lanes from SR 32 to SR 38. Motorists are only able to access the new freeway through entrance and exit ramps, all of which are now open.

The speed limit on US 31 in Westfield is now 55 mph which drastically improves drive times in the area.



## DISCLAIMER

Although information has been obtained from sources deemed reliable, neither Owner nor JLL makes any guarantees, warranties or representations, express or implied, as to the completeness or accuracy as to the information contained herein. Any projections, opinions, assumptions or estimates used are for example only. There may be differences between projected and actual results, and those differences may be material. The Property may be withdrawn without notice. Neither Owner nor JLL accepts any liability for any loss or damage suffered by any party resulting from reliance on this information. If the recipient of this information has signed a confidentiality agreement regarding this matter, this information is subject to the terms of that agreement. © 2018. Jones Lang LaSalle IP, Inc. All rights reserved.

